

## PRODUCT DATASHEET

Focus the light to highlight the point , Led spot light  
HYD-315B-12W 3000K

---



### Application

- Home
  - Restaurant
  - Exhibition Hall
  - Stage
  - Conference Room
  - Clothing Store
- 

### Benefits

- Flicker free
  - It can be used for emphasis lighting and decorative lighting
  - Spot light have prominent advantages in commercial lighting
  - No secondary light spot, it can create a wall washing effect
- 

### Features

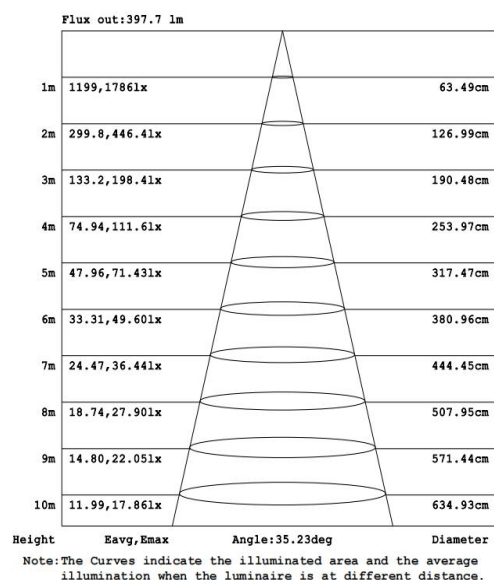
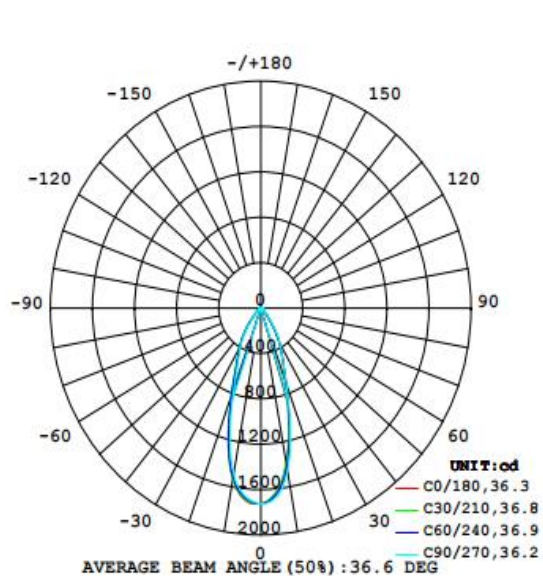
- Warranty 5 years
  - Good light transmission
  - Small size, light weight, buckle design, easy to install
  - Die-cast aluminum, good heat dissipation, reduce light decay
-

### Electrical Data

Nominal wattage (W)	<b>12W</b>
Nominal Voltage (V)	220-240 V
Mains Frequency (Hz)	50
Nominal Current (mA)	101
LED Driver Current (mA)	300
LED Driver Voltage (VDC)	30-42
LED Driver Efficiency (%)	83%
Power Factor $\lambda$	0.55C@Full load,230V
Total harmonic distortion (%)	...
Operating mode	External LED driver

### Photometrical data

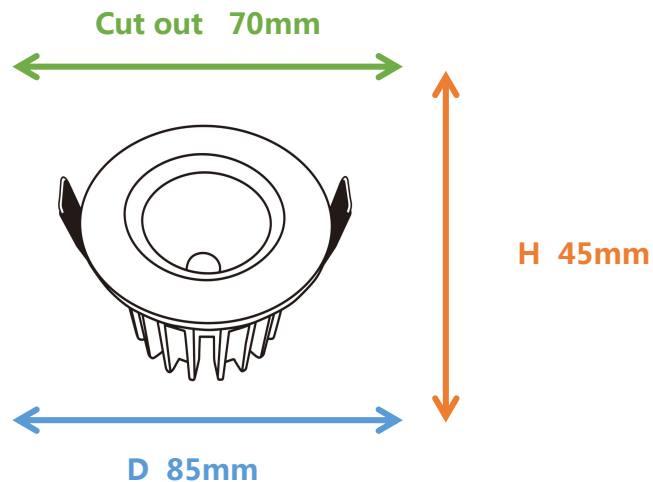
Luminous flux $\pm 10\%$ (lm)	958 lm
Luminous efficacy	78 lm/w
Color temperature	<b>3000K</b>
Light color (designation)	Warm White
Color rendering index Ra	$\geq 80$
Standard deviation of color matching	$\leq 5$ SDCM
Luminous intensity/cd	1728
Flickering	Flicker free
Beam angle	37 °



**3000K**

### Dimensions & Weight

Diameter (mm)	85
Height (mm)	45
Product weight (g)	...



### Material & Colors

Product color	White frame and Black housing
Housing color	Black
Body material	Aluminum
Cover material	PC
Mercury content	0.0 mg

### Application & Mounting

Ambient temperature range	-10°C~+40 °C
Temperature range at storage	-10°C~+40 °C
Type of connection	Screwless terminal
Type of protection	IP65
Dimmable	No
Mounting type	Recessed
Mounting location	Ceiling
Application environment	Indoor/Outdoor
Cut size (mm)	70
LED module replaceable	Not replaceable
With light source	Yes

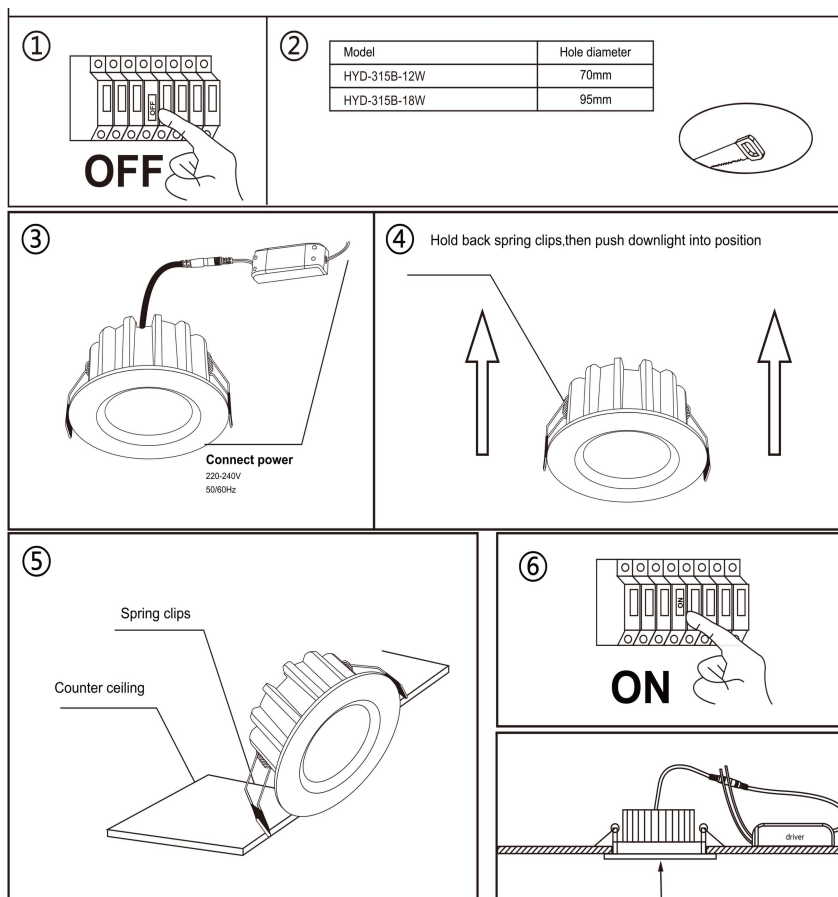
## Certificates & Lifespan

Life (h)	50,000
Certificates	CB CE LVD EMC
Standards	ISO9001:2015

## Logistical Data

Product code	Dimensions (L*W*H)	Pcs/ carton	G.W. kg	Volume CBM
HYD-315B-12W	54.5*23*37.5 cm	50	...	0.04701

## Installation Method



## Disclaimer

Subject to change without notice. Errors and omission excepted. Always make sure to use the most recent release.