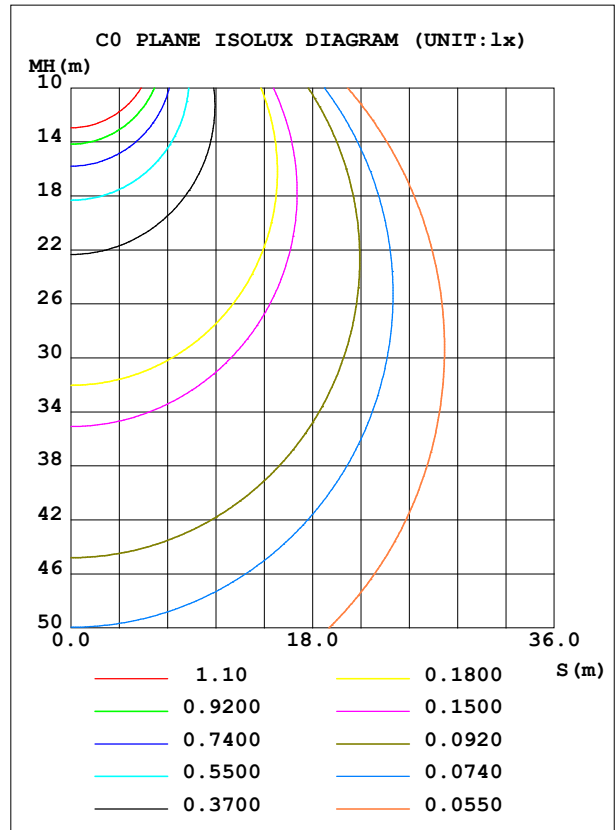
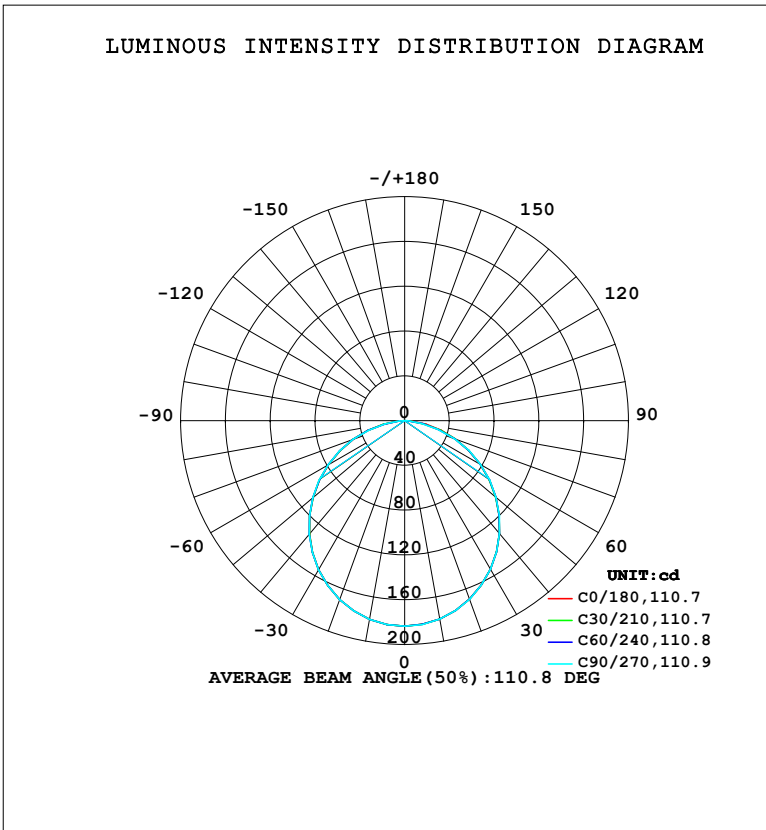


LUMINAIRE PHOTOMETRIC TEST REPORT

Test:U:220.44V I:0.0485A P:6.2955W PF:0.5883 Freq:50.00Hz Lamp Flux:512.84x1 lm		
NAME:	TYPE:	WEIGHT:
SPEC.:	DIM.:	SERIAL No.:
MFR.: EVERFINE	SUR.:	Shielding Angle:

DATA OF LAMP		PHOTOMETRIC DATA				Eff: 81.46 lm/W
MODEL	102BS	I _{max} (cd)	183.6	S/MH (C0/180)	1.25	
NOMINAL POWER (W)	6	LOR (%)	100.0	S/MH (C90/270)	1.25	
RATED VOLTAGE (V)	220	TOTAL FLUX (lm)	512.84	η UP, DN (C0-180)	0.0, 49.9	
NOMINAL FLUX (lm)	512.84	CIE CLASS	DIRECT	η UP, DN (C180-360)	0.0, 50.1	
LAMPS INSIDE	1	η up (%)	0.0	CIBSE SHR NOM	1.25	
TEST VOLTAGE (V)	219.5	η down (%)	100.0	CIBSE SHR MAX	1.35	



C Range: 0 - 360DEG
 C Interval: 15.0DEG
 Test Speed: HIGH
 Temperature: 25.3°C
 Operators: DAMIN
 Test Date: 2024-01-24

γ Range: 0 - 90DEG
 γ Interval: 5.0DEG
 Test System: EVERFINE GO-2000B_V1 SYSTEM V2.00.473
 Humidity: 65.0%
 Test Distance: 9.401m [K=1.0000]
 Remarks:

ZONAL FLUX DIAGRAM

ZONAL FLUX DIAGRAM:

γ	C0	C45	C90	C135	C180	C225	C270	C315	γ	Φ zone	Φ total	%lum,lamp
10	180.0	180.1	180.1	180.2	180.2	180.1	180.2	180.0	0- 10	17.36	17.36	3.38,3.38
20	169.6	169.8	169.7	169.9	170.0	169.9	170.0	169.8	10- 20	49.60	66.96	13.1,13.1
30	153.3	153.5	153.4	153.7	153.7	153.6	153.8	153.5	20- 30	74.83	141.8	27.6,27.6
40	131.8	132.0	132.0	132.3	132.4	132.2	132.6	132.0	30- 40	89.71	231.5	45.1,45.1
50	106.4	106.6	106.6	106.9	107.0	106.8	107.3	106.6	40- 50	92.49	324.0	63.2,63.2
60	78.02	78.29	78.43	78.63	78.67	78.46	79.13	78.25	50- 60	83.05	407.0	79.4,79.4
70	48.30	48.36	47.34	48.67	48.91	48.78	49.11	48.66	60- 70	62.97	470.0	91.6,91.6
80	19.52	17.43	15.65	17.84	19.97	18.79	17.88	18.85	70- 80	35.15	505.1	98.5,98.5
90	0.2755	0.2646	0.2651	0.2655	0.3293	0.3368	0.3314	0.3259	80- 90	7.693	512.8	100,100
100									90-100			
110									100-110			
120									110-120			
130									120-130			
140									130-140			
150									140-150			
160									150-160			
170									160-170			
180									170-180			
DEG	LUMINOUS INTENSITY:cd									UNIT:lm		

Conical surface Flux(90deg): 278.17 lm

%lum = 54.2%

%lamp = 54.2%

Conical surface Flux(130deg): 441.59 lm

%lum = 86.1%

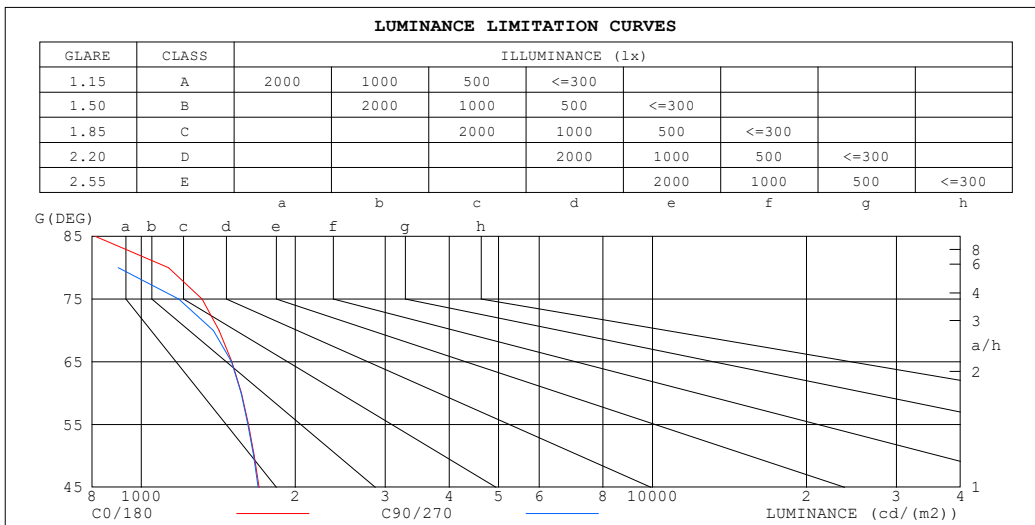
%lamp = 86.1%

C Range: 0 - 360DEG
 C Interval: 15.0DEG
 Test Speed: HIGH
 Temperature:25.3°C
 Operators:DAMIN
 Test Date:2024-01-24

γ Range: 0 - 90DEG
 γ Interval: 5.0DEG
 Test System:EVERFINE GO-2000B_V1 SYSTEM V2.00.473
 Humidity:65.0%
 Test Distance:9.401m [K=1.0000]
 Remarks:

LUMINANCE LIMITATION CURVES

Test:U:220.44V I:0.0485A P:6.2955W PF:0.5883 Freq:50.00Hz Lamp Flux:512.84x1 lm		
NAME:	TYPE:	WEIGHT:
SPEC.:	DIM.:	SERIAL No.:
MFR.: EVERFINE	SUR.:	Shielding Angle:



LUMINANCE cd/ (m2)		
G (DEG)	C0/180	C90/270
85	812	298
80	1130	901
75	1314	1183
70	1420	1383
65	1503	1500
60	1569	1567
55	1622	1617
50	1664	1658
45	1700	1692

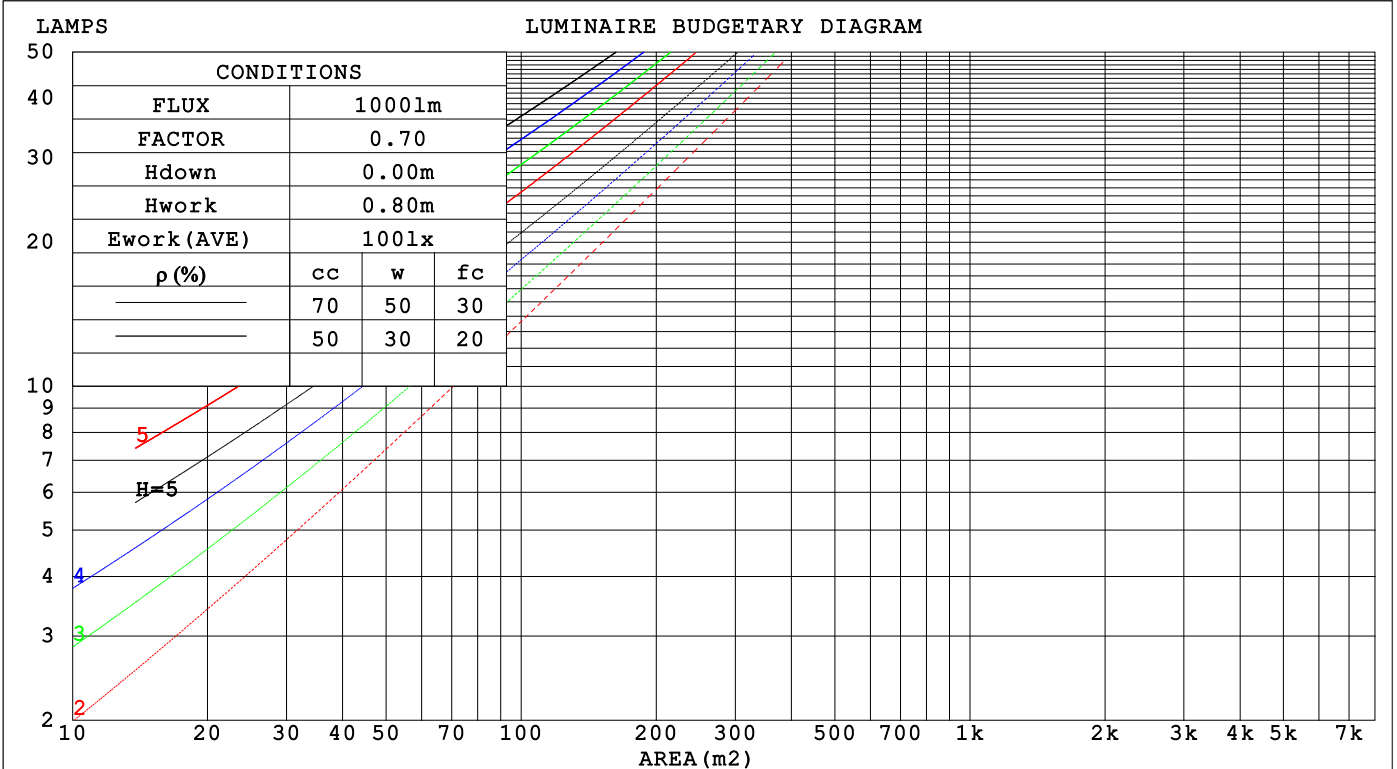
C Range: 0 - 360DEG
 C Interval: 15.0DEG
 Test Speed: HIGH
 Temperature:25.3°C
 Operators:DAMIN
 Test Date:2024-01-24

γ Range: 0 - 90DEG
 γ Interval: 5.0DEG
 Test System:EVERFINE GO-2000B_V1 SYSTEM V2.00.473
 Humidity:65.0%
 Test Distance:9.401m [K=1.0000]
 Remarks:

CU AND LUMINAIRE BUDGETARY ESTIMATE DIAGRAM

Test:U:220.44V I:0.0485A P:6.2955W PF:0.5883 Freq:50.00Hz Lamp Flux:512.84x1 lm		
NAME:	TYPE:	WEIGHT:
SPEC.:	DIM.:	SERIAL No.:
MFR.: EVERFINE	SUR.:	Shielding Angle:

pcc	80%			70%			50%			30%			10%			0
p _w	50%	30%	10%	50%	30%	10%	50%	30%	10%	50%	30%	10%	50%	30%	10%	0
p _{fc}	20%			20%			20%			20%			20%			0
RCR	RCR:Room Cavity Ratio						Coefficients of Utilization(CU)									
0.0	1.19	1.19	1.19	1.16	1.16	1.16	1.11	1.11	1.11	1.06	1.06	1.06	1.02	1.02	1.02	1.00
1.0	1.04	.00	.96	1.02	.98	.95	.98	.94	.92	.94	.91	.89	.90	.88	.86	.84
2.0	.91	.84	.78	.89	.83	.77	.85	.80	.75	.82	.78	.74	.79	.75	.72	.70
3.0	.80	.72	.65	.78	.71	.64	.75	.69	.63	.72	.67	.62	.70	.65	.61	.59
4.0	.71	.62	.55	.69	.61	.55	.67	.60	.54	.64	.58	.53	.62	.57	.52	.50
5.0	.63	.54	.47	.62	.53	.47	.60	.52	.47	.58	.51	.46	.56	.50	.46	.43
6.0	.57	.48	.41	.56	.47	.41	.54	.46	.41	.52	.46	.40	.51	.45	.40	.38
7.0	.51	.43	.37	.51	.42	.36	.49	.42	.36	.48	.41	.36	.46	.40	.36	.34
8.0	.47	.38	.33	.46	.38	.32	.45	.38	.32	.44	.37	.32	.42	.36	.32	.30
9.0	.43	.35	.29	.42	.35	.29	.41	.34	.29	.40	.34	.29	.39	.33	.29	.27
10.0	.40	.32	.27	.39	.32	.27	.38	.31	.26	.37	.31	.26	.36	.30	.26	.24



C Range: 0 - 360DEG
 C Interval: 15.0DEG
 Test Speed: HIGH
 Temperature:25.3°C
 Operators:DAMIN
 Test Date:2024-01-24

γ Range: 0 - 90DEG
 γ Interval: 5.0DEG
 Test System:EVERFINE GO-2000B_V1 SYSTEM V2.00.473
 Humidity:65.0%
 Test Distance:9.401m [K=1.0000]
 Remarks:

WEC AND CCEC

Test:U:220.44V I:0.0485A P:6.2955W PF:0.5883 Freq:50.00Hz								
Lamp Flux:512.84x1 lm								
NAME:			TYPE:			WEIGHT:		
SPEC.:			DIM.:			SERIAL No.:		
MFR.: EVERFINE			SUR.:			Shielding Angle:		

ρ_{CC}	80%			70%			50%			30%			10%			0
ρ_w	50%	30%	10%	50%	30%	10%	50%	30%	10%	50%	30%	10%	50%	30%	10%	0
ρ_{fc}	20%			20%			20%			20%			20%			0
RCR	RCR:Room Cavity Ratio						Wall Exitance Coefficients (WEC)									
0.0																
1.0	.305	.173	.055	.298	.170	.054	.284	.163	.052	.272	.157	.050	.261	.151	.049	
2.0	.289	.158	.049	.282	.156	.048	.271	.151	.047	.260	.146	.046	.250	.141	.045	
3.0	.268	.143	.043	.262	.141	.042	.252	.137	.042	.243	.133	.041	.234	.129	.040	
4.0	.248	.129	.038	.243	.127	.038	.234	.124	.037	.225	.121	.036	.217	.118	.036	
5.0	.229	.117	.034	.225	.115	.034	.217	.113	.033	.209	.110	.033	.202	.108	.032	
6.0	.213	.107	.031	.209	.106	.030	.202	.103	.030	.195	.101	.030	.189	.099	.029	
7.0	.198	.098	.028	.195	.097	.028	.188	.095	.027	.182	.093	.027	.176	.092	.027	
8.0	.185	.090	.025	.182	.090	.025	.176	.088	.025	.171	.087	.025	.166	.085	.025	
9.0	.174	.084	.023	.171	.083	.023	.166	.082	.023	.161	.081	.023	.156	.079	.023	
10.0	.163	.078	.022	.161	.078	.022	.156	.076	.022	.152	.075	.021	.147	.074	.021	

ρ_{CC}	80%			70%			50%			30%			10%			0
ρ_w	50%	30%	10%	50%	30%	10%	50%	30%	10%	50%	30%	10%	50%	30%	10%	0
ρ_{fc}	20%			20%			20%			20%			20%			0
RCR	RCR:Room Cavity Ratio						Ceiling Cavity Exitance Coefficients (CCEC)									
0.0	.190	.190	.190	.163	.163	.163	.111	.111	.111	.064	.064	.064	.020	.020	.020	
1.0	.180	.156	.135	.154	.134	.116	.105	.092	.080	.061	.053	.047	.019	.017	.015	
2.0	.172	.132	.098	.147	.114	.085	.101	.079	.059	.058	.046	.035	.019	.015	.011	
3.0	.164	.114	.075	.141	.099	.065	.097	.068	.045	.056	.040	.027	.018	.013	.009	
4.0	.156	.101	.059	.134	.087	.051	.092	.061	.036	.053	.036	.021	.017	.012	.007	
5.0	.149	.091	.047	.128	.078	.041	.088	.055	.029	.051	.032	.017	.016	.010	.006	
6.0	.142	.082	.039	.122	.071	.034	.084	.050	.024	.049	.029	.014	.016	.010	.005	
7.0	.135	.075	.033	.116	.065	.029	.080	.046	.021	.047	.027	.012	.015	.009	.004	
8.0	.129	.069	.029	.111	.060	.025	.077	.042	.018	.045	.025	.011	.014	.008	.004	
9.0	.123	.065	.025	.106	.056	.022	.073	.039	.016	.043	.023	.009	.014	.008	.003	
10.0	.117	.060	.022	.101	.052	.020	.070	.037	.014	.041	.022	.008	.013	.007	.003	

C Range: 0 - 360DEG
 C Interval: 15.0DEG
 Test Speed: HIGH
 Temperature:25.3°C
 Operators:DAMIN
 Test Date:2024-01-24

γ Range: 0 - 90DEG
 γ Interval: 5.0DEG
 Test System:EVERFINE GO-2000B_V1 SYSTEM V2.00.473
 Humidity:65.0%
 Test Distance:9.401m [K=1.0000]
 Remarks:

UGR(Unified Glare Rating) Table

Test:U:220.44V I:0.0485A P:6.2955W PF:0.5883 Freq:50.00Hz										
Lamp Flux:512.84x1 lm										
NAME:			TYPE:				WEIGHT:			
SPEC.:			DIM.:				SERIAL No.:			
MFR.: EVERFINE			SUR.:				Shielding Angle:			
ceiling/cavity	0.7	0.7	0.5	0.5	0.3	0.7	0.7	0.5	0.5	0.3
walls	0.5	0.3	0.5	0.3	0.3	0.5	0.3	0.5	0.3	0.3
working plane	0.2	0.2	0.2	0.2	0.2	0.2	0.2	0.2	0.2	0.2
Room dimensions	Viewed crosswise					Viewed endwise				
x = 2H y = 2H	16.9	18.4	17.1	18.6	18.8	16.9	18.4	17.2	18.6	18.8
3H	18.4	19.8	18.7	20.0	20.2	18.3	19.7	18.6	20.0	20.2
4H	19.0	20.3	19.3	20.5	20.8	18.8	20.2	19.1	20.4	20.7
6H	19.3	20.6	19.7	20.9	21.1	19.1	20.3	19.4	20.6	20.9
8H	19.4	20.6	19.7	20.9	21.1	19.0	20.2	19.4	20.5	20.8
12H	19.4	20.5	19.7	20.8	21.1	19.0	20.1	19.3	20.4	20.7
4H 2H	17.5	18.8	17.8	19.1	19.3	17.5	18.8	17.8	19.1	19.3
3H	19.2	20.3	19.5	20.6	20.9	19.1	20.3	19.5	20.6	20.9
4H	19.9	20.9	20.2	21.2	21.6	19.7	20.8	20.1	21.1	21.4
6H	20.3	21.3	20.7	21.6	22.0	20.0	21.0	20.4	21.3	21.7
8H	20.4	21.3	20.8	21.6	22.0	20.0	20.9	20.4	21.2	21.6
12H	20.4	21.2	20.8	21.6	22.0	20.0	20.8	20.4	21.1	21.6
8H 4H	20.1	21.0	20.5	21.3	21.7	19.9	20.8	20.3	21.2	21.6
6H	20.6	21.3	21.1	21.7	22.2	20.3	21.0	20.7	21.4	21.9
8H	20.7	21.3	21.2	21.8	22.2	20.3	20.9	20.8	21.4	21.8
12H	20.8	21.3	21.2	21.8	22.3	20.3	20.8	20.8	21.3	21.8
12H 4H	20.1	20.9	20.5	21.3	21.7	19.9	20.7	20.3	21.1	21.5
6H	20.6	21.3	21.1	21.7	22.1	20.3	20.9	20.8	21.4	21.8
8H	20.7	21.3	21.2	21.7	22.2	20.3	20.9	20.8	21.3	21.8
Variations with the observer position at spacings(CIE Pub.117):										
S = 1.0H	+ 0.1 / - 0.2					+ 0.1 / - 0.2				
1.5H	+ 0.1 / - 0.3					+ 0.2 / - 0.3				
2.0H	+ 0.3 / - 0.4					+ 0.3 / - 0.4				

CIE Pub.117, 512.8 lm Total Lamp Luminous Flux Correct (8log(F/F0) = -2.3)
 Area: 0.1 m2

C Range: 0 - 360DEG
 C Interval: 15.0DEG
 Test Speed: HIGH
 Temperature:25.3°C
 Operators:DAMIN
 Test Date:2024-01-24

γ Range: 0 - 90DEG
 γ Interval: 5.0DEG
 Test System:EVERFINE GO-2000B_V1 SYSTEM V2.00.473
 Humidity:65.0%
 Test Distance:9.401m [K=1.0000]
 Remarks:

UTILIZATION FACTORS TABLE

Test:U:220.44V I:0.0485A P:6.2955W PF:0.5883 Freq:50.00Hz Lamp Flux:512.84x1 lm		
NAME:	TYPE:	WEIGHT:
SPEC.:	DIM.:	SERIAL No.:
MFR.: EVERFINE	SUR.:	Shielding Angle:

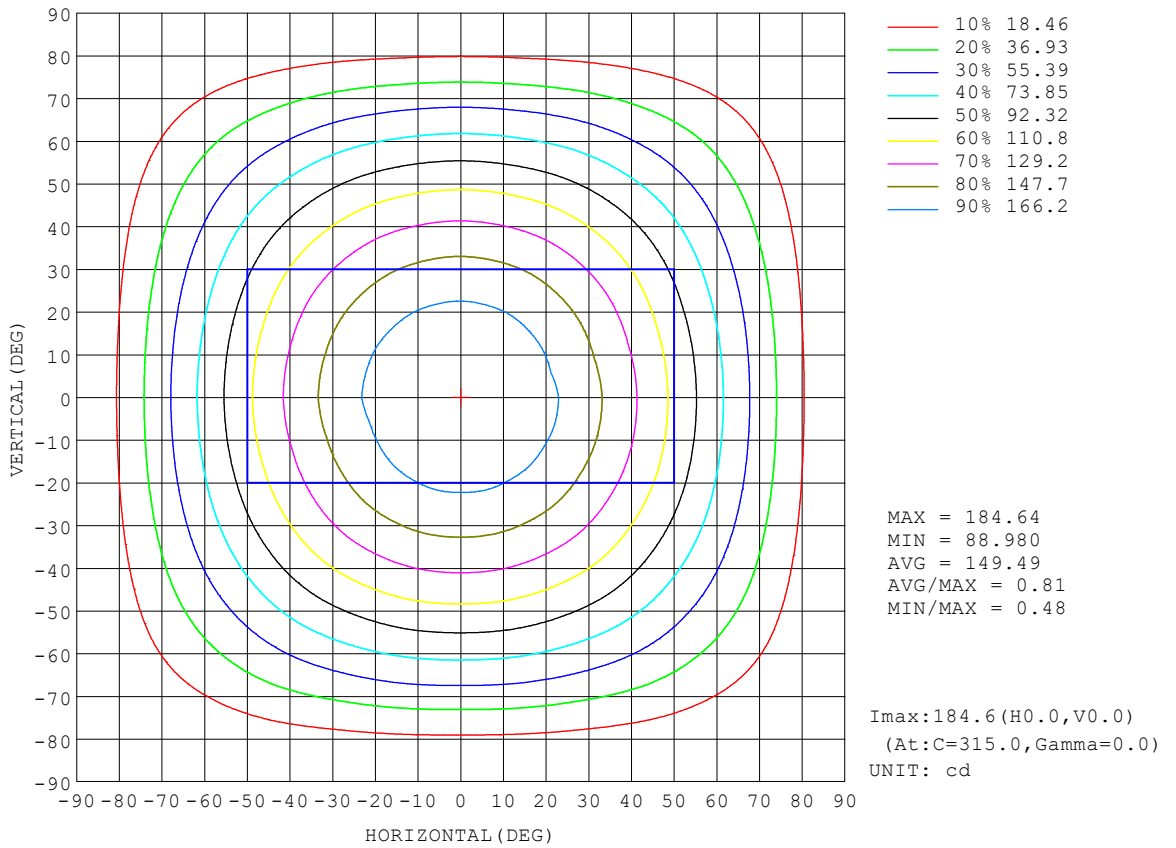
REFLECTANCE										
Ceiling	0.8	0.8	0.8	0.7	0.7	0.7	0.5	0.5	0.5	0
Walls	0.7	0.5	0.3	0.7	0.5	0.3	0.7	0.5	0.3	0
Working plane	0.2	0.2	0.2	0.2	0.2	0.2	0.2	0.2	0.2	0
ROOM INDEX	UTILIZATION FACTORS (PERCENT) $k(RI) \times RCR = 5$									
$k = 0.60$	58	46	39	57	46	39	56	46	39	33
0.80	68	56	49	67	56	49	65	55	48	42
1.00	76	65	58	75	65	58	73	66	57	50
1.25	83	73	66	82	72	65	79	71	65	57
1.50	88	79	72	87	78	71	84	76	70	63
2.00	95	87	80	93	86	80	90	83	78	70
2.50	99	91	85	97	90	85	93	87	83	74
3.00	102	96	90	100	94	89	96	91	87	79
4.00	106	101	96	104	99	95	100	96	92	83
5.00	109	104	100	106	102	99	102	99	95	86
ROOM INDEX	UF(total)									Direct
According to DIN EN 13032-2 2004			Suspended				SHRNOM = 1.25			

C Range: 0 - 360DEG
 C Interval: 15.0DEG
 Test Speed: HIGH
 Temperature:25.3°C
 Operators:DAMIN
 Test Date:2024-01-24

γ Range: 0 - 90DEG
 γ Interval: 5.0DEG
 Test System:EVERFINE GO-2000B_V1 SYSTEM V2.00.473
 Humidity:65.0%
 Test Distance:9.401m [K=1.0000]
 Remarks:

ISOCANDELA DIAGRAM

Test:U:220.44V I:0.0485A P:6.2955W PF:0.5883 Freq:50.00Hz Lamp Flux:512.84x1 lm		
NAME:	TYPE:	WEIGHT:
SPEC.:	DIM.:	SERIAL No.:
MFR.: EVERFINE	SUR.:	Shielding Angle:

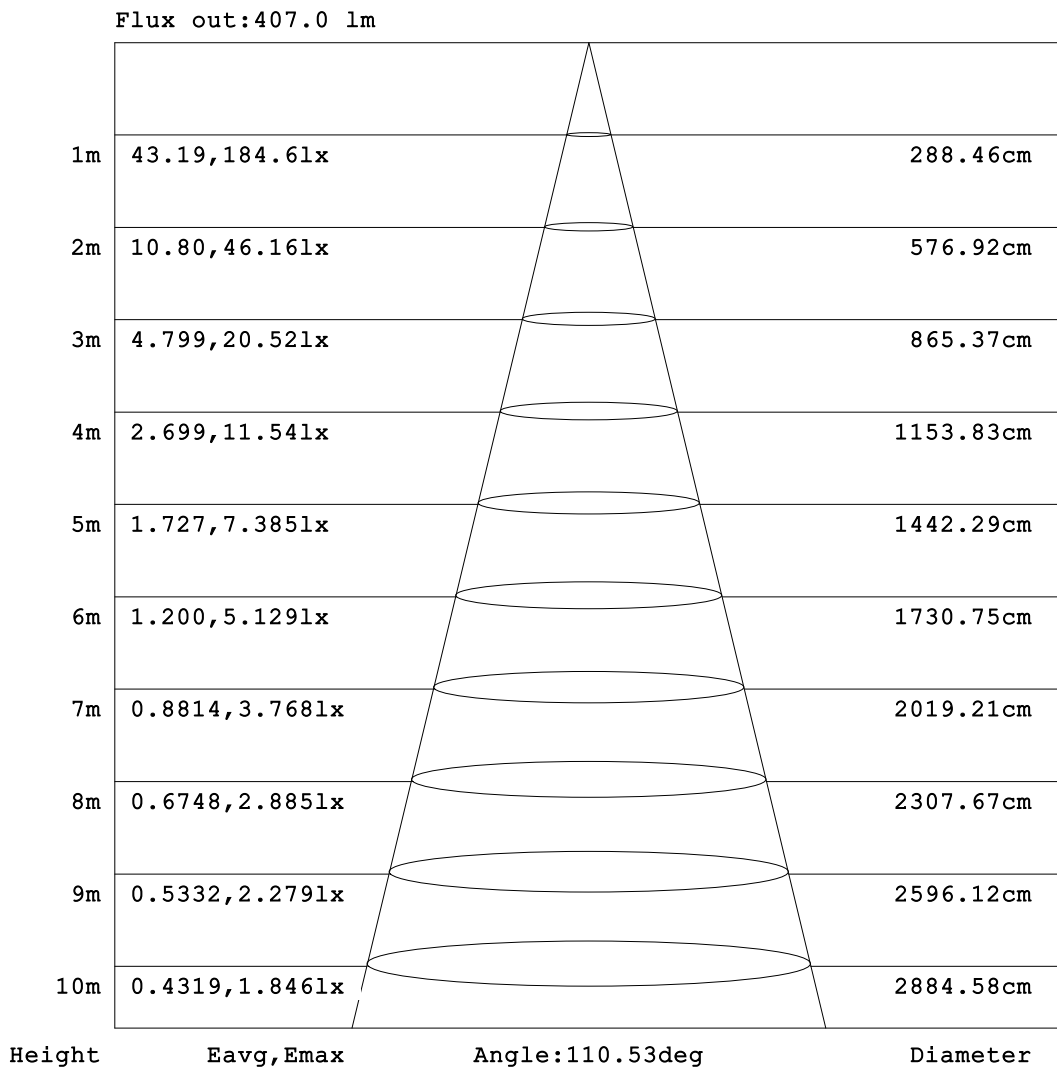


C Range: 0 - 360DEG
 C Interval: 15.0DEG
 Test Speed: HIGH
 Temperature:25.3°C
 Operators:DAMIN
 Test Date:2024-01-24

γ Range: 0 - 90DEG
 γ Interval: 5.0DEG
 Test System:EVERFINE GO-2000B_V1 SYSTEM V2.00.473
 Humidity:65.0%
 Test Distance:9.401m [K=1.0000]
 Remarks:

AAI Figure

Test:U:220.44V I:0.0485A P:6.2955W PF:0.5883 Freq:50.00Hz Lamp Flux:512.84x1 lm		
NAME:	TYPE:	WEIGHT:
SPEC.:	DIM.:	SERIAL No.:
MFR.: EVERFINE	SUR.:	Shielding Angle:



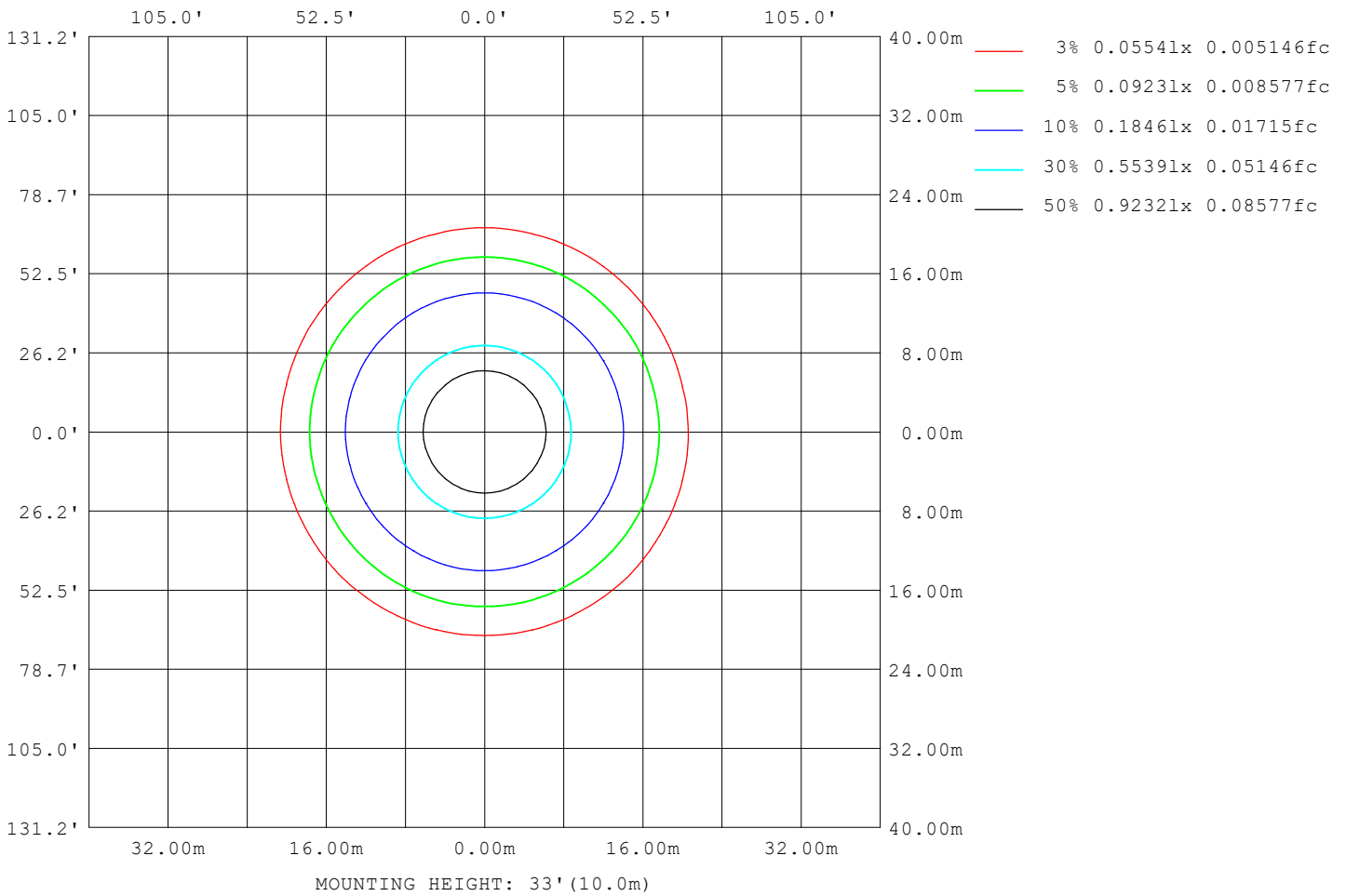
Note:The Curves indicate the illuminated area and the average illumination when the luminaire is at different distance.

C Range: 0 - 360DEG
 C Interval: 15.0DEG
 Test Speed: HIGH
 Temperature:25.3°C
 Operators:DAMIN
 Test Date:2024-01-24

γ Range: 0 - 90DEG
 γ Interval: 5.0DEG
 Test System:EVERFINE GO-2000B_V1 SYSTEM V2.00.473
 Humidity:65.0%
 Test Distance:9.401m [K=1.0000]
 Remarks:

ISOLUX DIAGRAM

Test:U:220.44V I:0.0485A P:6.2955W PF:0.5883 Freq:50.00Hz Lamp Flux:512.84x1 lm		
NAME:	TYPE:	WEIGHT:
SPEC.:	DIM.:	SERIAL No.:
MFR.: EVERFINE	SUR.:	Shielding Angle:



C Range: 0 - 360DEG
 C Interval: 15.0DEG
 Test Speed: HIGH
 Temperature:25.3°C
 Operators:DAMIN
 Test Date:2024-01-24

γ Range: 0 - 90DEG
 γ Interval: 5.0DEG
 Test System:EVERFINE GO-2000B_V1 SYSTEM V2.00.473
 Humidity:65.0%
 Test Distance:9.401m [K=1.0000]
 Remarks:

LED Avg.L Report

Test:U:220.44V I:0.0485A P:6.2955W PF:0.5883 Freq:50.00Hz Lamp Flux:512.84x1 lm		
NAME:	TYPE:	WEIGHT:
SPEC.:	DIM.:	SERIAL No.:
MFR.: EVERFINE	SUR.:	Shielding Angle:

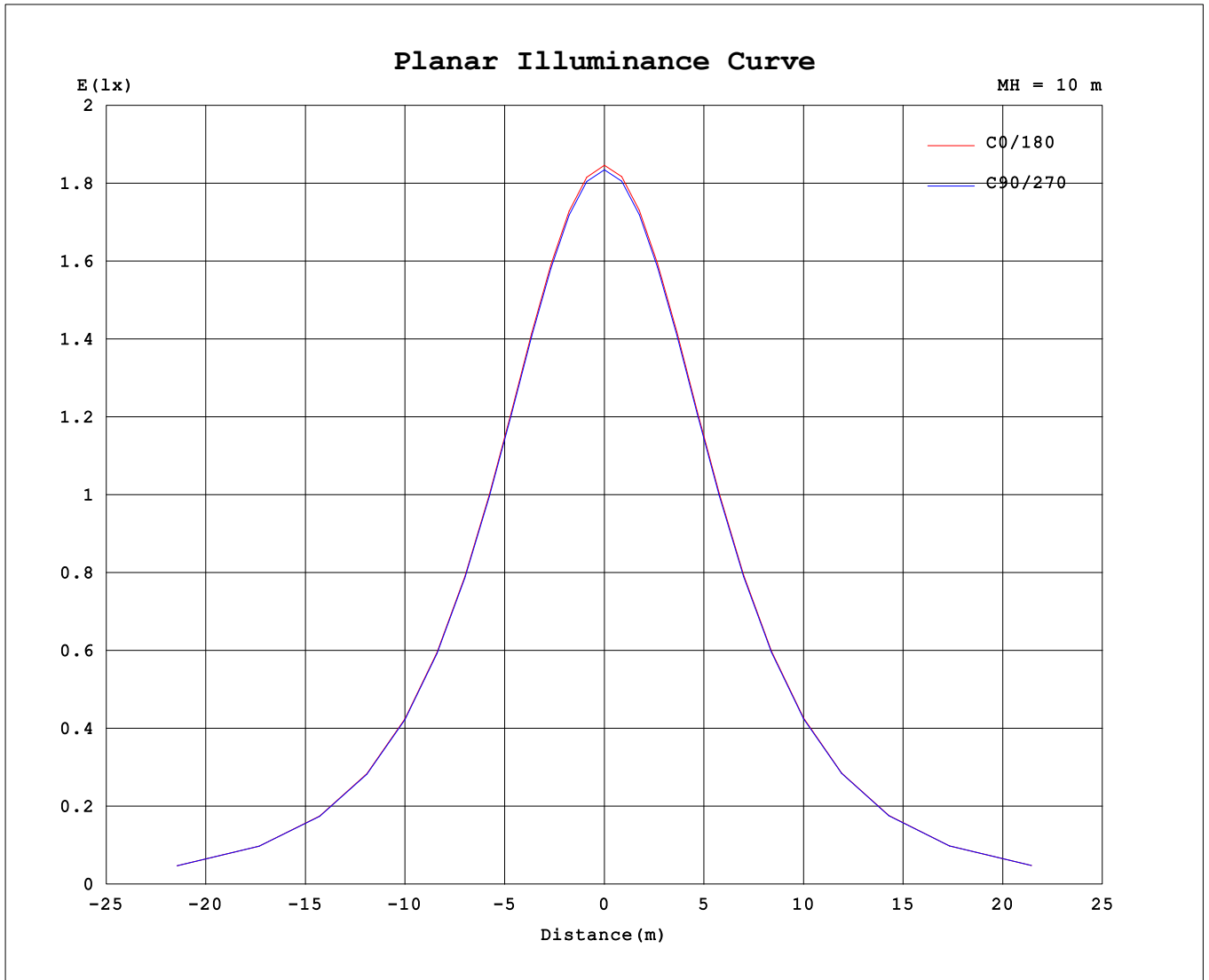
AvgL	cd/m2
L_0~180 (65) av	1502
L_0~180 (75) av	1317
L_0~180 (85) av	830
L_90~270 (65) av	1513
L_90~270 (75) av	1233
L_90~270 (85) av	415
L_45 (65) av	1506
L_45 (75) av	1295
L_45 (85) av	561

Standard: GB/T 29293-2012

C Range: 0 - 360DEG
 C Interval: 15.0DEG
 Test Speed: HIGH
 Temperature:25.3°C
 Operators:DAMIN
 Test Date:2024-01-24

γ Range: 0 - 90DEG
 γ Interval: 5.0DEG
 Test System:EVERFINE GO-2000B_V1 SYSTEM V2.00.473
 Humidity:65.0%
 Test Distance:9.401m [K=1.0000]
 Remarks:

Planar Illuminance Curve



C Range: 0 - 360DEG
 C Interval: 15.0DEG
 Test Speed: HIGH
 Temperature: 25.3°C
 Operators: DAMIN
 Test Date: 2024-01-24

γ Range: 0 - 90DEG
 γ Interval: 5.0DEG
 Test System: EVERFINE GO-2000B_V1 SYSTEM V2.00.473
 Humidity: 65.0%
 Test Distance: 9.401m [K=1.0000]
 Remarks:

LUMINOUS DISTRIBUTION INTENSITY DATA

Test:U:220.44V I:0.0485A P:6.2955W PF:0.5883 Freq:50.00Hz Lamp Flux:512.84x1 lm		
NAME:	TYPE:	WEIGHT:
SPEC.:	DIM.:	SERIAL No.:
MFR.: EVERFINE	SUR.:	Shielding Angle:

Table--1

UNIT: cd

C (DEG) \ γ (DEG)	0	15	30	45	60	75	90	105	120	135	150	165	180	195	210	225	240	255	270
0	184	184	184	184	184	184	184	184	184	184	184	184	184	184	184	184	184	184	184
5	183	183	183	183	183	183	183	183	183	183	183	183	183	183	183	183	183	183	183
10	180	180	180	180	180	180	180	180	180	180	180	180	180	180	180	180	180	180	180
15	176	176	176	176	176	176	176	176	176	176	176	176	176	176	176	176	176	176	176
20	170	170	170	170	170	170	170	170	170	170	170	170	170	170	170	170	170	170	170
25	162	162	162	162	162	162	162	162	162	163	162	163	163	162	163	162	163	162	163
30	153	153	153	153	153	154	153	154	153	154	153	154	154	154	154	154	154	154	154
35	143	143	143	143	143	143	143	144	143	144	143	144	144	143	144	143	144	144	144
40	132	132	132	132	132	132	132	132	132	132	132	132	132	132	132	132	132	133	132
45	120	120	119	120	120	120	120	120	120	120	120	120	120	120	120	120	120	120	120
50	106	107	106	107	106	107	107	107	107	107	107	107	107	107	107	107	107	107	107
55	92.5	92.8	92.4	92.7	92.5	93.0	92.8	93.1	92.8	93.0	92.7	93.1	93.2	92.9	93.2	93.0	93.4	93.2	93.5
60	78.0	78.3	77.9	78.3	78.1	78.6	78.4	78.8	78.4	78.6	78.3	78.6	78.7	78.3	78.7	78.5	78.9	78.8	79.1
65	63.2	63.5	63.1	63.5	63.2	63.7	63.4	63.9	63.5	63.9	63.4	63.8	63.8	63.5	63.8	63.6	64.2	64.1	64.4
70	48.3	48.6	48.2	48.4	47.8	47.9	47.3	48.0	48.1	48.7	48.6	48.9	48.9	48.7	49.0	48.8	49.1	48.9	49.1
75	33.8	34.1	33.4	33.1	31.5	31.2	30.6	31.3	31.8	33.4	33.8	34.5	34.3	34.2	34.4	33.8	33.7	33.1	33.2
80	19.5	19.6	18.2	17.4	16.3	16.0	15.6	16.2	16.6	17.8	18.4	19.7	20.0	19.6	19.3	18.8	18.4	17.8	17.9
85	7.04	5.60	4.72	4.55	3.54	3.10	2.60	3.08	3.59	4.50	4.63	5.68	7.42	5.95	5.57	5.26	5.00	4.56	4.63
90	0.28	0.27	0.28	0.26	0.26	0.26	0.27	0.27	0.27	0.27	0.27	0.27	0.33	0.36	0.34	0.34	0.33	0.34	0.33

C Range: 0 - 360DEG
 C Interval: 15.0DEG
 Test Speed: HIGH
 Temperature:25.3°C
 Operators:DAMIN
 Test Date:2024-01-24

γ Range: 0 - 90DEG
 γ Interval: 5.0DEG
 Test System:EVERFINE GO-2000B_V1 SYSTEM V2.00.473
 Humidity:65.0%
 Test Distance:9.401m [K=1.0000]
 Remarks:

