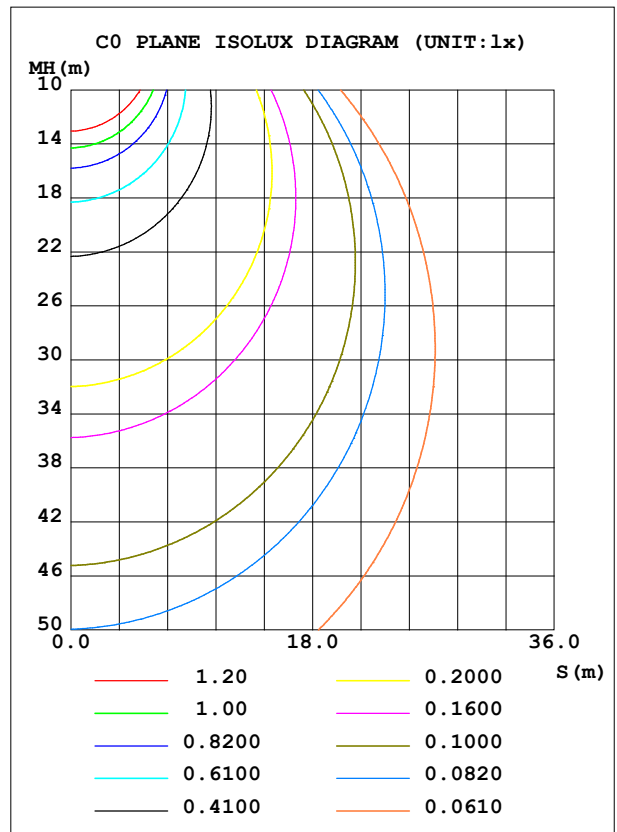
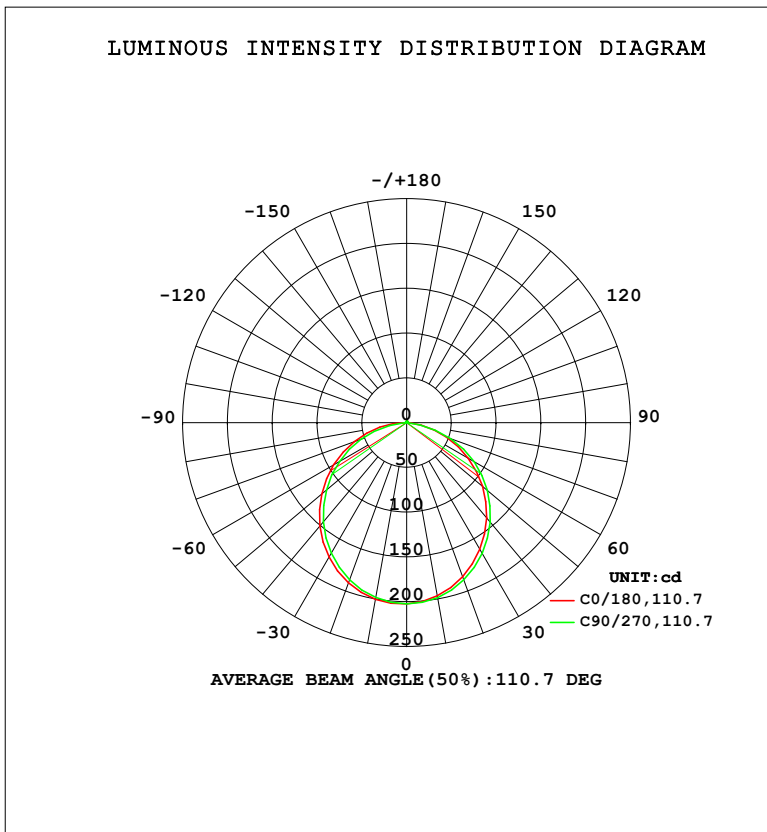


LUMINAIRE PHOTOMETRIC TEST REPORT

Test:U:220.35V I:0.0581A P:6.9557W PF:0.5429 Freq:50.00Hz Lamp Flux:570.029x1 lm		
NAME: HYD	TYPE: 116	WEIGHT:
SPEC.:	DIM.:	SERIAL No.:
MFR.: EVERFINE	SUR.: 1	Shielding Angle:

DATA OF LAMP		PHOTOMETRIC DATA				Eff: 81.95 lm/W
MODEL	116C	I <sub>max</sub> (cd)	202.5	S/MH (C0/180)	1.27	
NOMINAL POWER (W)	7	LOR (%)	100.0	S/MH (C90/270)	1.24	
RATED VOLTAGE (V)	220	TOTAL FLUX (lm)	570.03	η UP, DN (C0-180)	0.4, 48.9	
NOMINAL FLUX (lm)	570.029	CIE CLASS	DIRECT	η UP, DN (C180-360)	0.5, 50.2	
LAMPS INSIDE	1	η up (%)	0.9	CIBSE SHR NOM	1.25	
TEST VOLTAGE (V)	219.5	η down (%)	99.1	CIBSE SHR MAX	1.35	



C Range: 0 - 360DEG  
 C Interval: 22.5DEG  
 Test Speed: HIGH  
 Temperature: 25.3°C  
 Operators: DAMIN  
 Test Date: 2023-11-18

γ Range: 0 - 180DEG  
 γ Interval: 5.0DEG  
 Test System: EVERFINE GO-2000B\_V1 SYSTEM V2.00.473  
 Humidity: 65.0%  
 Test Distance: 9.401m [K=1.0000]  
 Remarks:

**ZONAL FLUX DIAGRAM**

ZONAL FLUX DIAGRAM:

$\gamma$	C0	C45	C90	C135	C180	C225	C270	C315	$\gamma$	$\Phi$ zone	$\Phi$ total	%lum,lamp
10	196.5	197.2	198.4	199.4	200.2	199.6	198.4	197.4	0- 10	19.13	19.13	3.36,3.36
20	183.2	184.5	186.8	188.5	190.2	189.0	186.7	184.8	10- 20	54.58	73.71	12.9,12.9
30	163.5	165.5	168.6	171.0	173.3	171.7	168.3	165.7	20- 30	82.18	155.9	27.3,27.3
40	138.9	141.3	145.2	148.0	150.8	148.8	144.7	141.4	30- 40	98.38	254.3	44.6,44.6
50	110.5	113.3	117.6	120.9	124.0	121.7	117.0	113.3	40- 50	101.5	355.7	62.4,62.4
60	79.46	82.42	87.18	90.67	94.09	91.59	86.51	82.55	50- 60	91.48	447.2	78.5,78.5
70	47.51	49.93	52.34	57.58	62.33	59.63	54.54	50.58	60- 70	70.00	517.2	90.7,90.7
80	16.87	15.49	15.21	21.35	30.78	24.91	19.52	19.00	70- 80	39.53	556.7	97.7,97.7
90	0.2743	0.2705	0.2359	0.2424	0.5651	0.2825	0.2900	0.3089	80- 90	8.047	564.8	99.1,99.1
100	0.3872	0.3783	0.3441	0.3207	0.4234	0.4447	0.4529	0.4844	90-100	0.3774	565.2	99.1,99.1
110	0.5780	0.5525	0.5189	0.5022	0.6083	0.6191	0.6521	0.6781	100-110	0.5218	565.7	99.2,99.2
120	0.7687	0.7567	0.7182	0.6959	0.8228	0.8353	0.8634	0.8779	110-120	0.6846	566.4	99.4,99.4
130	0.9773	0.9430	0.9173	0.8835	1.020	1.016	1.057	1.072	120-130	0.7963	567.2	99.5,99.5
140	1.150	1.117	1.116	1.071	1.192	1.202	1.244	1.241	130-140	0.8317	568.0	99.6,99.6
150	1.323	1.304	1.292	1.247	1.371	1.364	1.389	1.404	140-150	0.7843	568.8	99.8,99.8
160	1.472	1.466	1.455	1.422	1.526	1.520	1.570	1.574	150-160	0.6525	569.4	99.9,99.9
170	1.609	1.616	1.593	1.586	1.669	1.652	1.666	1.671	160-170	0.4422	569.9	100,100
180	1.681	1.694	1.678	1.689	1.693	1.712	1.690	1.689	170-180	0.1586	570.0	100,100
DEG	LUMINOUS INTENSITY:cd									UNIT:lm		

Conical surface Flux(90deg): 305.44 lm

%lum = 53.6%

%lamp = 53.6%

Conical surface Flux(130deg): 485.52 lm

%lum = 85.2%

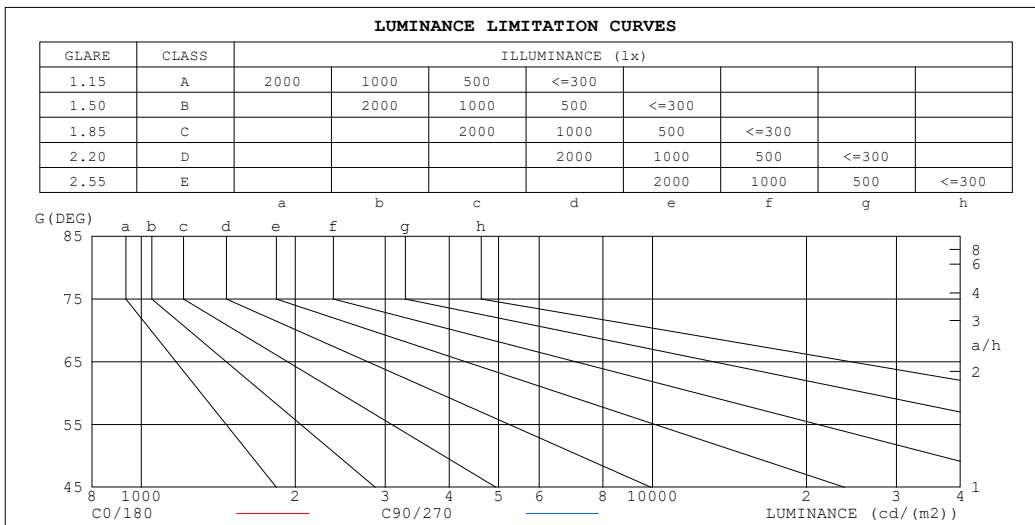
%lamp = 85.2%

C Range: 0 - 360DEG  
 C Interval: 22.5DEG  
 Test Speed: HIGH  
 Temperature:25.3°C  
 Operators:DAMIN  
 Test Date:2023-11-18

$\gamma$  Range: 0 - 180DEG  
 $\gamma$  Interval: 5.0DEG  
 Test System:EVERFINE GO-2000B\_V1 SYSTEM V2.00.473  
 Humidity:65.0%  
 Test Distance:9.401m [K=1.0000]  
 Remarks:

**LUMINANCE LIMITATION CURVES**

Test:U:220.35V I:0.0581A P:6.9557W PF:0.5429 Freq:50.00Hz Lamp Flux:570.029x1 lm		
NAME: HYD	TYPE: 116	WEIGHT:
SPEC.:	DIM.:	SERIAL No.:
MFR.: EVERFINE	SUR.: 1	Shielding Angle:



LUMINANCE cd/(m2)		
G (DEG)	C0/180	C90/270
85	35	11
80	98	87
75	124	130
70	140	153
65	152	166
60	161	174
55	168	179
50	174	183
45	179	186

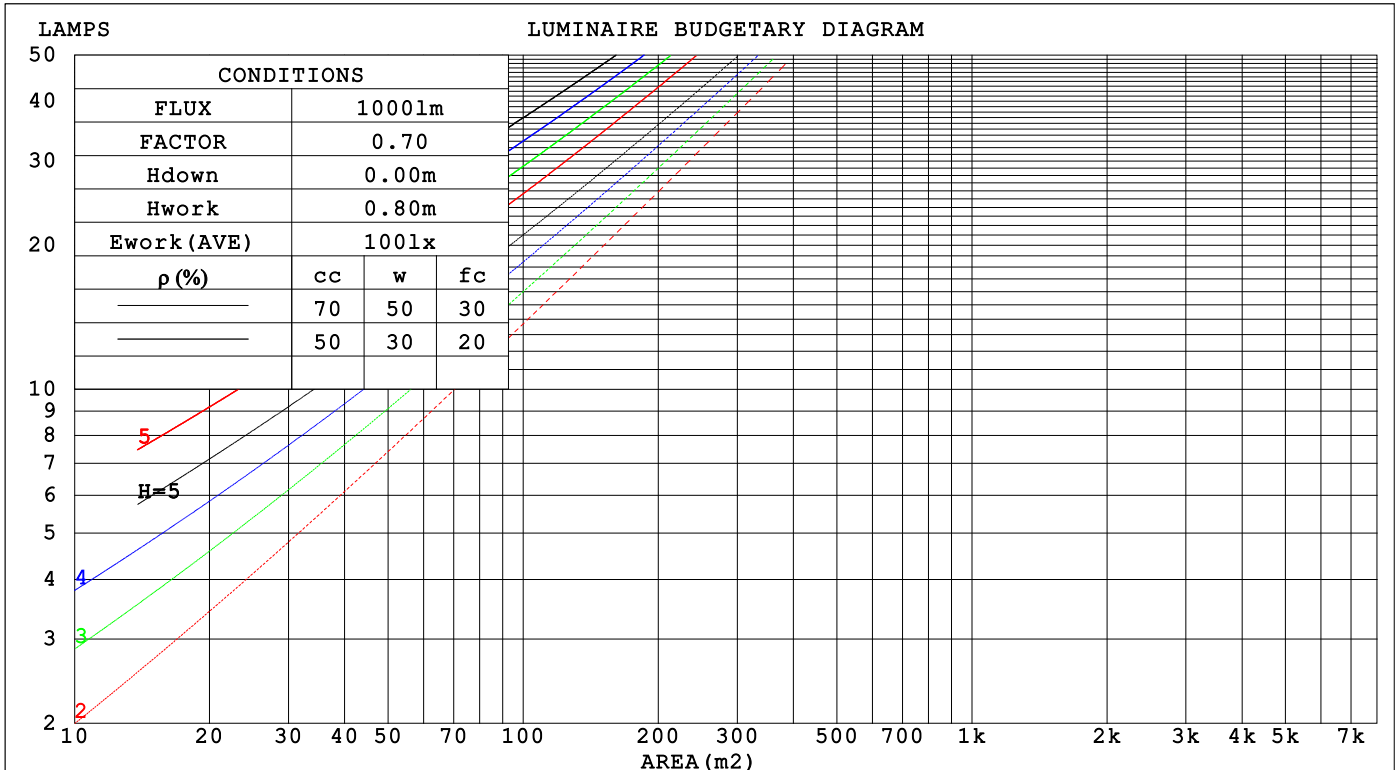
C Range: 0 - 360DEG  
 C Interval: 22.5DEG  
 Test Speed: HIGH  
 Temperature:25.3°C  
 Operators:DAMIN  
 Test Date:2023-11-18

γ Range: 0 - 180DEG  
 γ Interval: 5.0DEG  
 Test System:EVERFINE GO-2000B\_V1 SYSTEM V2.00.473  
 Humidity:65.0%  
 Test Distance:9.401m [K=1.0000]  
 Remarks:

**CU AND LUMINAIRE BUDGETARY ESTIMATE DIAGRAM**

Test:U:220.35V I:0.0581A P:6.9557W PF:0.5429 Freq:50.00Hz Lamp Flux:570.029x1 lm		
NAME: HYD	TYPE: 116	WEIGHT:
SPEC.:	DIM.:	SERIAL No.:
MFR.: EVERFINE	SUR.: 1	Shielding Angle:

ρcc	80%			70%			50%			30%			10%			0
ρw	50%	30%	10%	50%	30%	10%	50%	30%	10%	50%	30%	10%	50%	30%	10%	0
ρfc	20%			20%			20%			20%			20%			0
RCR	RCR:Room Cavity Ratio															
	Coefficients of Utilization(CU)															
0.0	1.19	1.19	1.19	1.16	1.16	1.16	1.11	1.11	1.11	1.06	1.06	1.06	1.01	1.01	1.01	.99
1.0	1.04	.90	.96	1.02	.98	.94	.97	.94	.91	.93	.91	.88	.89	.87	.85	.83
2.0	.91	.84	.78	.89	.82	.77	.85	.80	.75	.81	.77	.73	.78	.75	.71	.69
3.0	.79	.71	.65	.78	.70	.64	.75	.68	.63	.72	.66	.62	.69	.64	.61	.58
4.0	.70	.62	.55	.69	.61	.54	.66	.59	.54	.64	.58	.53	.62	.56	.52	.50
5.0	.63	.54	.47	.62	.53	.47	.59	.52	.46	.57	.51	.46	.55	.50	.45	.43
6.0	.57	.48	.41	.56	.47	.41	.54	.46	.41	.52	.45	.40	.50	.44	.40	.38
7.0	.51	.43	.36	.50	.42	.36	.49	.41	.36	.47	.41	.36	.46	.40	.35	.33
8.0	.47	.38	.32	.46	.38	.32	.45	.37	.32	.43	.37	.32	.42	.36	.32	.30
9.0	.43	.35	.29	.42	.34	.29	.41	.34	.29	.40	.33	.29	.39	.33	.28	.27
10.0	.40	.32	.26	.39	.31	.26	.38	.31	.26	.37	.31	.26	.36	.30	.26	.24



C Range: 0 - 360DEG  
 C Interval: 22.5DEG  
 Test Speed: HIGH  
 Temperature:25.3°C  
 Operators:DAMIN  
 Test Date:2023-11-18

γ Range: 0 - 180DEG  
 γ Interval: 5.0DEG  
 Test System:EVERFINE GO-2000B\_V1 SYSTEM V2.00.473  
 Humidity:65.0%  
 Test Distance:9.401m [K=1.0000]  
 Remarks:

**WEC AND CCEC**

Test:U:220.35V I:0.0581A P:6.9557W PF:0.5429 Freq:50.00Hz								
Lamp Flux:570.029x1 lm								
NAME: HYD			TYPE: 116			WEIGHT:		
SPEC.:			DIM.:			SERIAL No.:		
MFR.: EVERFINE			SUR.: 1			Shielding Angle:		

$\rho_{CC}$	80%			70%			50%			30%			10%			0
$\rho_w$	50%	30%	10%	50%	30%	10%	50%	30%	10%	50%	30%	10%	50%	30%	10%	0
$\rho_{fc}$	20%			20%			20%			20%			20%			0
RCR	RCR:Room Cavity Ratio						Wall Exitance Coefficients(WEC)									
0.0																
1.0	.304	.173	.055	.297	.169	.054	.283	.163	.052	.271	.156	.050	.259	.150	.048	
2.0	.289	.158	.049	.282	.155	.048	.270	.150	.047	.259	.145	.045	.248	.141	.044	
3.0	.268	.143	.043	.262	.140	.042	.251	.136	.041	.241	.132	.041	.232	.129	.040	
4.0	.248	.129	.038	.242	.127	.038	.233	.124	.037	.224	.120	.036	.216	.117	.036	
5.0	.229	.117	.034	.225	.115	.034	.216	.112	.033	.208	.110	.033	.201	.107	.032	
6.0	.213	.107	.031	.209	.105	.030	.201	.103	.030	.194	.101	.030	.187	.099	.029	
7.0	.198	.098	.028	.194	.097	.028	.188	.095	.027	.181	.093	.027	.175	.091	.027	
8.0	.185	.090	.025	.182	.089	.025	.176	.088	.025	.170	.086	.025	.164	.084	.025	
9.0	.173	.084	.023	.170	.083	.023	.165	.082	.023	.160	.080	.023	.155	.079	.023	
10.0	.163	.078	.022	.160	.077	.022	.155	.076	.021	.151	.075	.021	.146	.074	.021	

$\rho_{CC}$	80%			70%			50%			30%			10%			0
$\rho_w$	50%	30%	10%	50%	30%	10%	50%	30%	10%	50%	30%	10%	50%	30%	10%	0
$\rho_{fc}$	20%			20%			20%			20%			20%			0
RCR	RCR:Room Cavity Ratio						Ceiling Cavity Exitance Coefficients(CCEC)									
0.0	.197	.197	.197	.169	.169	.169	.115	.115	.115	.066	.066	.066	.021	.021	.021	
1.0	.187	.163	.142	.160	.140	.122	.109	.096	.084	.063	.056	.049	.020	.018	.016	
2.0	.179	.139	.106	.153	.120	.091	.105	.083	.064	.061	.048	.037	.019	.016	.012	
3.0	.171	.121	.082	.147	.105	.071	.101	.073	.050	.058	.043	.029	.019	.014	.010	
4.0	.164	.108	.066	.140	.093	.057	.097	.065	.040	.056	.038	.024	.018	.012	.008	
5.0	.156	.098	.055	.134	.085	.047	.092	.059	.034	.054	.035	.020	.017	.011	.007	
6.0	.149	.089	.047	.128	.077	.041	.088	.054	.029	.051	.032	.017	.017	.010	.006	
7.0	.142	.083	.041	.122	.072	.035	.085	.050	.025	.049	.030	.015	.016	.010	.005	
8.0	.136	.077	.036	.117	.067	.031	.081	.047	.022	.047	.028	.013	.015	.009	.004	
9.0	.130	.072	.033	.112	.062	.028	.078	.044	.020	.045	.026	.012	.015	.008	.004	
10.0	.124	.068	.030	.107	.059	.026	.074	.041	.018	.043	.024	.011	.014	.008	.004	

C Range: 0 - 360DEG  
 C Interval: 22.5DEG  
 Test Speed: HIGH  
 Temperature:25.3°C  
 Operators:DAMIN  
 Test Date:2023-11-18

$\gamma$  Range: 0 - 180DEG  
 $\gamma$  Interval: 5.0DEG  
 Test System:EVERFINE GO-2000B\_V1 SYSTEM V2.00.473  
 Humidity:65.0%  
 Test Distance:9.401m [K=1.0000]  
 Remarks:

**UGR(Unified Glare Rating) Table**

Test:U:220.35V I:0.0581A P:6.9557W PF:0.5429 Freq:50.00Hz Lamp Flux:570.029x1 lm		
NAME: HYD	TYPE: 116	WEIGHT:
SPEC.:	DIM.:	SERIAL No.:
MFR.: EVERFINE	SUR.: 1	Shielding Angle:

ceiling/cavity	0.7	0.7	0.5	0.5	0.3	0.7	0.7	0.5	0.5	0.3
walls	0.5	0.3	0.5	0.3	0.3	0.5	0.3	0.5	0.3	0.3
working plane	0.2	0.2	0.2	0.2	0.2	0.2	0.2	0.2	0.2	0.2

Room dimensions	Viewed crosswise					Viewed endwise				
x = 2H y = 2H	8.4	9.9	8.7	10.1	10.4	8.7	10.2	9.0	10.4	10.7
3H	9.8	11.2	10.1	11.4	11.7	10.2	11.6	10.5	11.8	12.1
4H	10.3	11.6	10.6	11.9	12.2	10.7	12.0	11.0	12.2	12.5
6H	10.6	11.8	10.9	12.1	12.4	10.8	12.1	11.2	12.4	12.7
8H	10.5	11.7	10.9	12.0	12.3	10.8	12.0	11.1	12.3	12.6
12H	10.5	11.7	10.9	12.0	12.3	10.7	11.9	11.1	12.2	12.5
4H 2H	9.0	10.4	9.4	10.6	10.9	9.3	10.6	9.6	10.9	11.1
3H	10.6	11.8	11.0	12.1	12.4	10.9	12.1	11.3	12.4	12.7
4H	11.2	12.3	11.6	12.6	13.0	11.5	12.5	11.8	12.9	13.2
6H	11.5	12.5	12.0	12.9	13.2	11.7	12.6	12.1	13.0	13.4
8H	11.5	12.4	11.9	12.8	13.2	11.7	12.5	12.1	12.9	13.3
12H	11.5	12.3	11.9	12.7	13.1	11.6	12.4	12.1	12.8	13.2
8H 4H	11.4	12.3	11.8	12.7	13.1	11.6	12.5	12.1	12.9	13.3
6H	11.8	12.5	12.3	12.9	13.4	11.9	12.6	12.4	13.1	13.5
8H	11.8	12.4	12.3	12.9	13.3	11.9	12.5	12.4	13.0	13.4
12H	11.8	12.3	12.3	12.8	13.3	11.8	12.4	12.3	12.9	13.3
12H 4H	11.4	12.2	11.8	12.6	13.0	11.6	12.4	12.0	12.8	13.2
6H	11.8	12.4	12.2	12.9	13.3	11.9	12.5	12.4	13.0	13.4
8H	11.8	12.3	12.3	12.8	13.3	11.9	12.4	12.4	12.9	13.4

Variations with the observer position at spacings(CIE Pub.117):		
S = 1.0H	+ 0.2 / - 0.2	+ 0.1 / - 0.2
1.5H	+ 0.2 / - 0.3	+ 0.1 / - 0.3
2.0H	+ 0.3 / - 0.5	+ 0.3 / - 0.4

CIE Pub.117, 570.0 lm Total Lamp Luminous Flux Correct (8log(F/F0) = -2.0)  
Area: 1 m2

C Range: 0 - 360DEG  
C Interval: 22.5DEG  
Test Speed: HIGH  
Temperature:25.3°C  
Operators:DAMIN  
Test Date:2023-11-18

γ Range: 0 - 180DEG  
γ Interval: 5.0DEG  
Test System:EVERFINE GO-2000B\_V1 SYSTEM V2.00.473  
Humidity:65.0%  
Test Distance:9.401m [K=1.0000]  
Remarks:

**UTILIZATION FACTORS TABLE**

Test:U:220.35V I:0.0581A P:6.9557W PF:0.5429 Freq:50.00Hz Lamp Flux:570.029x1 lm		
NAME: HYD	TYPE: 116	WEIGHT:
SPEC.:	DIM.:	SERIAL No.:
MFR.: EVERFINE	SUR.: 1	Shielding Angle:

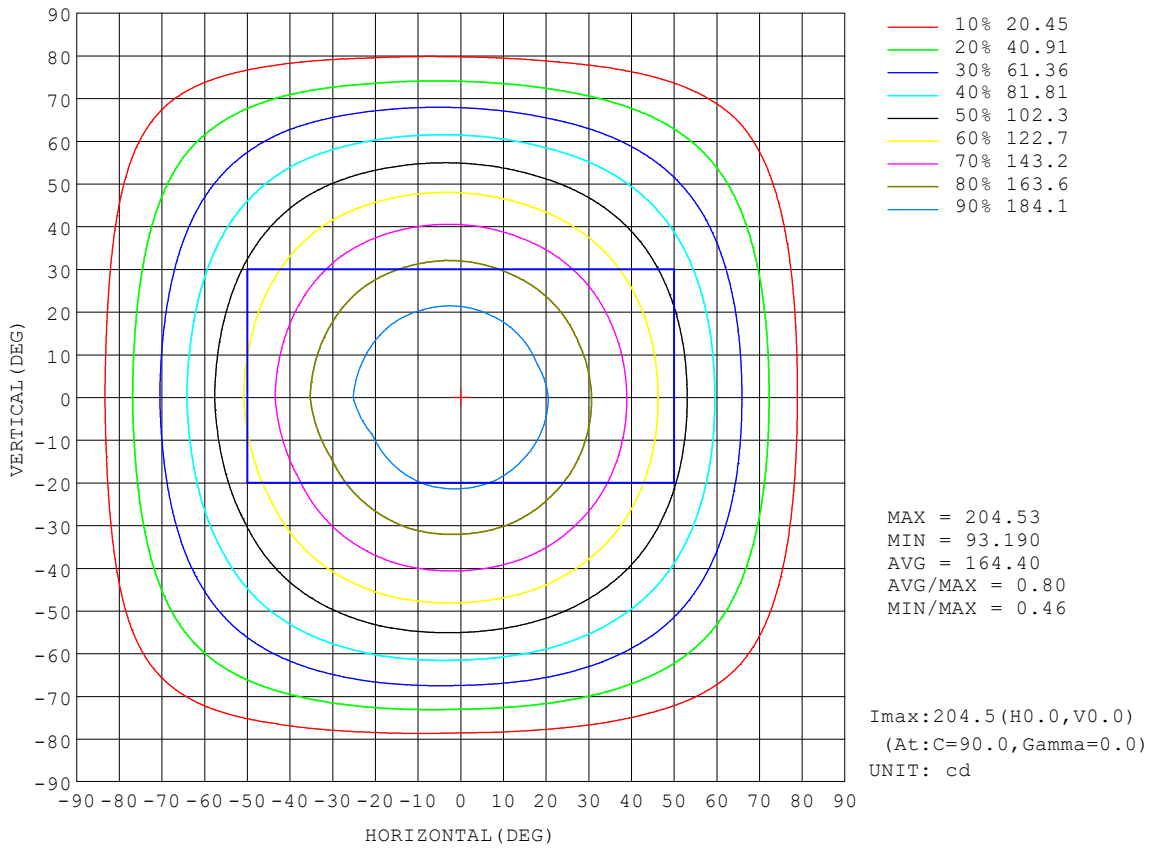
REFLECTANCE										
Ceiling	0.8	0.8	0.8	0.7	0.7	0.7	0.5	0.5	0.5	0
Walls	0.7	0.5	0.3	0.7	0.5	0.3	0.7	0.5	0.3	0
Working plane	0.2	0.2	0.2	0.2	0.2	0.2	0.2	0.2	0.2	0
ROOM INDEX	UTILIZATION FACTORS (PERCENT) $k(RI) \times RCR = 5$									
k = 0.60	57	46	39	57	46	39	55	45	39	32
0.80	68	56	49	66	55	48	65	55	48	41
1.00	76	65	58	75	64	57	72	66	57	49
1.25	83	73	65	82	72	65	79	70	64	57
1.50	88	78	71	86	77	71	83	75	70	62
2.00	95	86	80	93	85	79	89	83	78	70
2.50	99	91	85	97	90	84	93	87	82	74
3.00	102	95	90	100	94	89	96	91	86	78
4.00	106	101	96	104	99	95	99	95	92	83
5.00	109	104	100	106	102	98	101	98	95	86
ROOM INDEX	UF(total)									Direct
According to DIN EN 13032-2 2004			Suspended				SHRNOM = 1.25			

C Range: 0 - 360DEG  
 C Interval: 22.5DEG  
 Test Speed: HIGH  
 Temperature:25.3°C  
 Operators:DAMIN  
 Test Date:2023-11-18

$\gamma$  Range: 0 - 180DEG  
 $\gamma$  Interval: 5.0DEG  
 Test System:EVERFINE GO-2000B\_V1 SYSTEM V2.00.473  
 Humidity:65.0%  
 Test Distance:9.401m [K=1.0000]  
 Remarks:

**ISOCANDELA DIAGRAM**

Test:U:220.35V I:0.0581A P:6.9557W PF:0.5429 Freq:50.00Hz Lamp Flux:570.029x1 lm		
NAME: HYD	TYPE: 116	WEIGHT:
SPEC.:	DIM.:	SERIAL No.:
MFR.: EVERFINE	SUR.: 1	Shielding Angle:



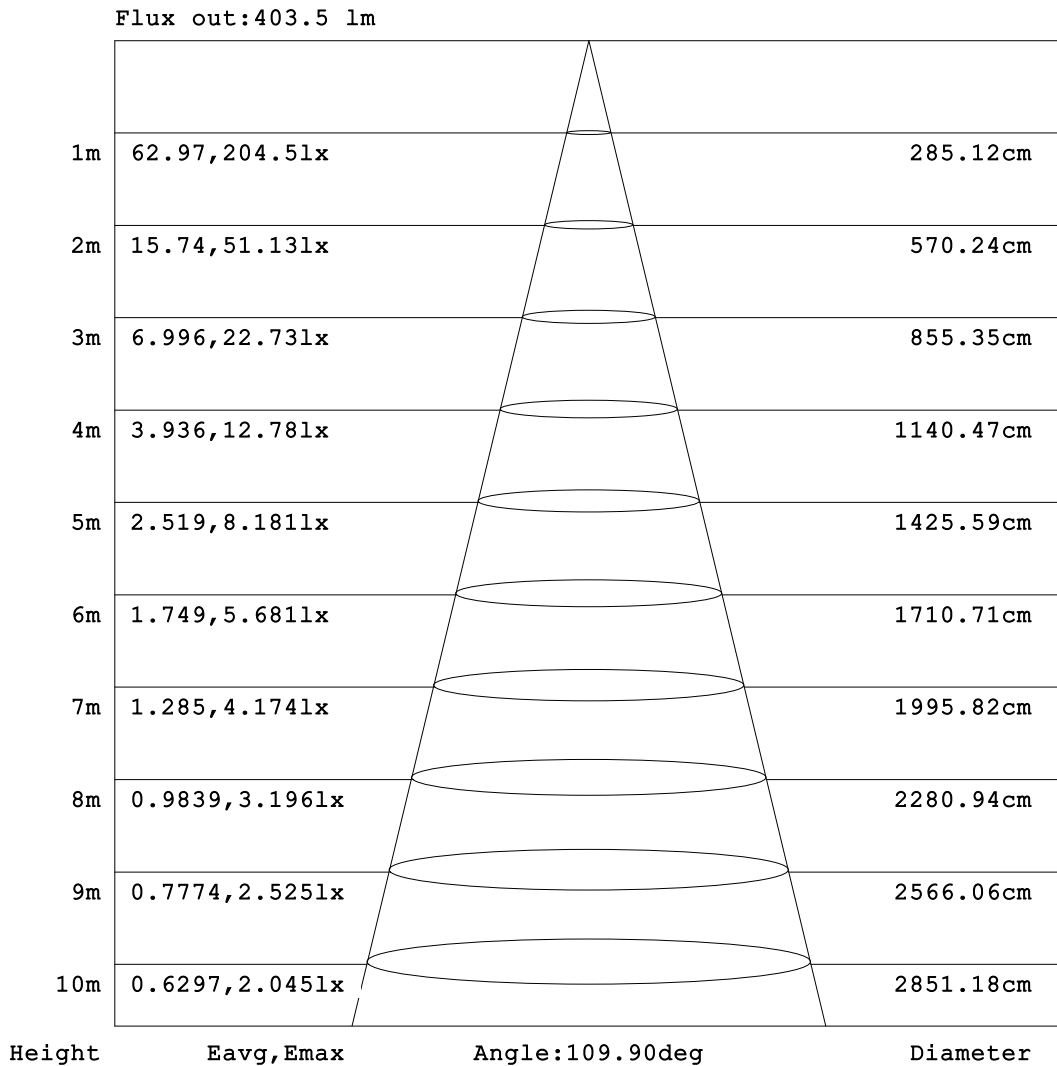
C Range: 0 - 360DEG  
 C Interval: 22.5DEG  
 Test Speed: HIGH  
 Temperature:25.3°C  
 Operators:DAMIN  
 Test Date:2023-11-18

γ Range: 0 - 180DEG  
 γ Interval: 5.0DEG  
 Test System:EVERFINE GO-2000B\_V1 SYSTEM V2.00.473  
 Humidity:65.0%  
 Test Distance:9.401m [K=1.0000]  
 Remarks:



**AAI Figure**

Test:U:220.35V I:0.0581A P:6.9557W PF:0.5429 Freq:50.00Hz Lamp Flux:570.029x1 lm		
NAME: HYD	TYPE: 116	WEIGHT:
SPEC.:	DIM.:	SERIAL No.:
MFR.: EVERFINE	SUR.: 1	Shielding Angle:



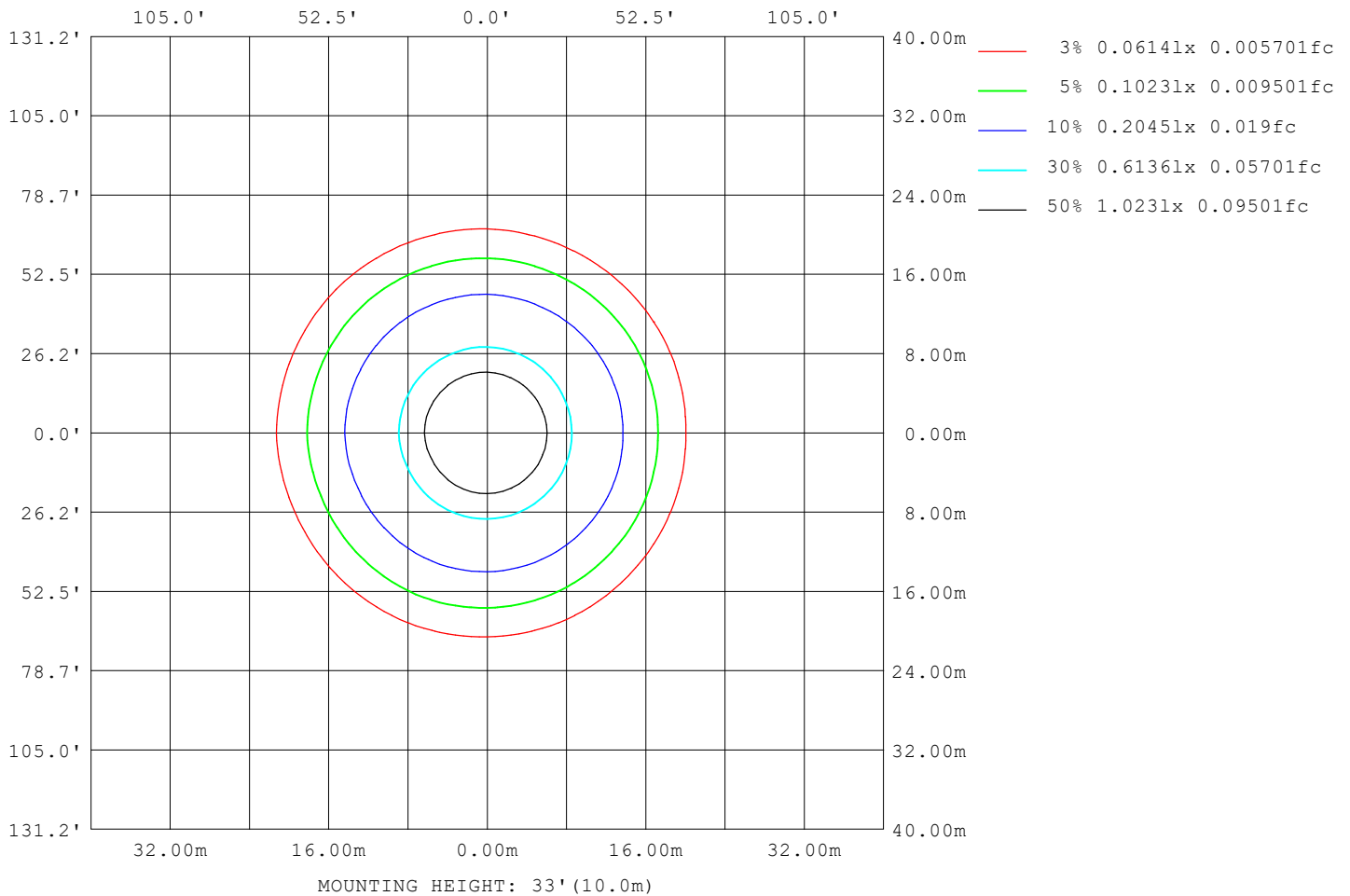
Note:The Curves indicate the illuminated area and the average illumination when the luminaire is at different distance.

C Range: 0 - 360DEG  
 C Interval: 22.5DEG  
 Test Speed: HIGH  
 Temperature:25.3°C  
 Operators:DAMIN  
 Test Date:2023-11-18

γ Range: 0 - 180DEG  
 γ Interval: 5.0DEG  
 Test System:EVERFINE GO-2000B\_V1 SYSTEM V2.00.473  
 Humidity:65.0%  
 Test Distance:9.401m [K=1.0000]  
 Remarks:

**ISOLUX DIAGRAM**

Test:U:220.35V I:0.0581A P:6.9557W PF:0.5429 Freq:50.00Hz Lamp Flux:570.029x1 lm		
NAME: HYD	TYPE: 116	WEIGHT:
SPEC.:	DIM.:	SERIAL No.:
MFR.: EVERFINE	SUR.: 1	Shielding Angle:



C Range: 0 - 360DEG  
 C Interval: 22.5DEG  
 Test Speed: HIGH  
 Temperature:25.3°C  
 Operators:DAMIN  
 Test Date:2023-11-18

γ Range: 0 - 180DEG  
 γ Interval: 5.0DEG  
 Test System:EVERFINE GO-2000B\_V1 SYSTEM V2.00.473  
 Humidity:65.0%  
 Test Distance:9.401m [K=1.0000]  
 Remarks:

**LED Avg.L Report**

Test:U:220.35V I:0.0581A P:6.9557W PF:0.5429 Freq:50.00Hz Lamp Flux:570.029x1 lm		
NAME: HYD	TYPE: 116	WEIGHT:
SPEC.:	DIM.:	SERIAL No.:
MFR.: EVERFINE	SUR.: 1	Shielding Angle:

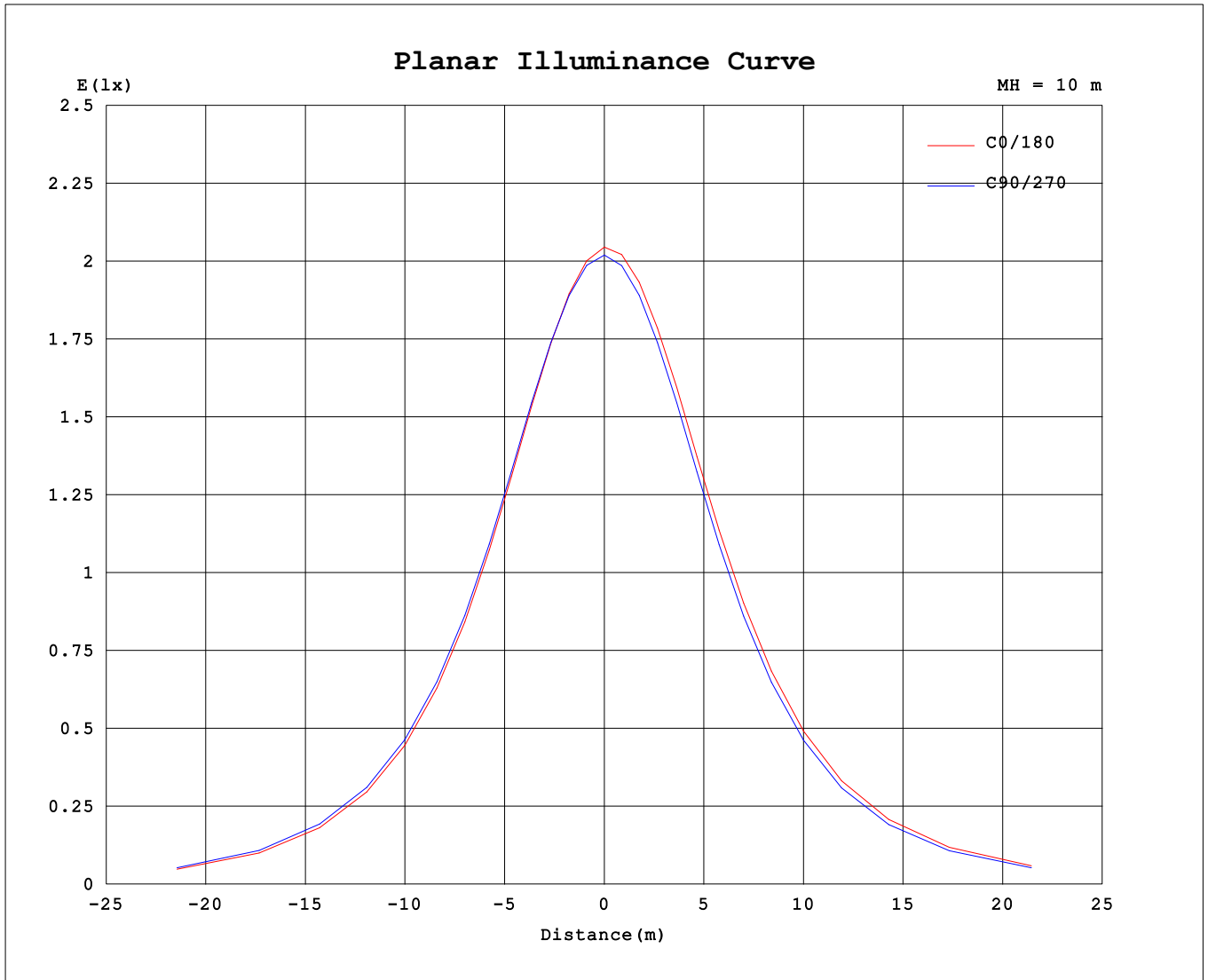
AvgL	cd/m2
L_0~180 (65) av	168
L_0~180 (75) av	151
L_0~180 (85) av	104
L_90~270 (65) av	167
L_90~270 (75) av	138
L_90~270 (85) av	22
L_45 (65) av	168
L_45 (75) av	145
L_45 (85) av	42

Standard: GB/T 29293-2012

C Range: 0 - 360DEG  
 C Interval: 22.5DEG  
 Test Speed: HIGH  
 Temperature:25.3°C  
 Operators:DAMIN  
 Test Date:2023-11-18

γ Range: 0 - 180DEG  
 γ Interval: 5.0DEG  
 Test System:EVERFINE GO-2000B\_V1 SYSTEM V2.00.473  
 Humidity:65.0%  
 Test Distance:9.401m [K=1.0000]  
 Remarks:

**Planar Illuminance Curve**



C Range: 0 - 360DEG  
 C Interval: 22.5DEG  
 Test Speed: HIGH  
 Temperature: 25.3°C  
 Operators: DAMIN  
 Test Date: 2023-11-18

γ Range: 0 - 180DEG  
 γ Interval: 5.0DEG  
 Test System: EVERFINE GO-2000B\_V1 SYSTEM V2.00.473  
 Humidity: 65.0%  
 Test Distance: 9.401m [K=1.0000]  
 Remarks:

LUMINOUS DISTRIBUTION INTENSITY DATA

Test:U:220.35V I:0.0581A P:6.9557W PF:0.5429 Freq:50.00Hz Lamp Flux:570.029x1 lm		
NAME: HYD	TYPE: 116	WEIGHT:
SPEC.:	DIM.:	SERIAL No.:
MFR.: EVERFINE	SUR.: 1	Shielding Angle:

Table--1

UNIT: cd

C (DEG) \ γ (DEG)	0	22.5	45	67.5	90	112.5	135	157.5	180	202.5	225	247.5	270	292.5	315	337.5			
0	202	202	202	202	202	202	202	202	202	202	202	202	202	202	202	202			
5	200	201	201	201	201	202	202	202	202	202	202	202	201	201	201	201			
10	197	197	197	198	198	199	199	200	200	200	200	199	198	198	197	197			
15	191	191	192	193	194	194	195	195	196	196	195	194	193	192	192	192			
20	183	184	185	186	187	188	189	189	190	190	189	188	187	185	185	184			
25	174	175	176	177	178	180	181	181	183	182	181	180	178	177	176	175			
30	164	165	165	167	169	170	171	172	173	173	172	170	168	166	166	165			
35	152	153	154	156	157	159	160	161	163	162	161	159	157	155	154	153			
40	139	140	141	144	145	147	148	149	151	150	149	147	145	142	141	141			
45	125	126	128	130	132	134	135	136	138	137	136	133	131	129	128	127			
50	110	112	113	116	118	120	121	122	124	123	122	119	117	114	113	113			
55	95.3	96.6	98.2	101	103	105	106	107	109	108	107	104	102	99.4	98.2	97.4			
60	79.5	80.9	82.4	85.2	87.2	89.6	90.7	91.7	94.1	92.9	91.6	88.8	86.5	83.8	82.5	81.7			
65	63.5	64.9	66.5	69.1	70.4	73.0	74.7	75.9	78.3	77.1	75.7	72.9	70.6	67.9	66.6	65.8			
70	47.5	48.8	49.9	51.3	52.3	55.2	57.6	60.0	62.3	61.1	59.6	56.8	54.5	51.9	50.6	49.8			
75	31.8	32.9	32.6	33.0	33.6	36.6	39.7	43.5	46.4	45.1	43.0	39.6	37.6	35.9	34.9	34.1			
80	16.9	17.1	15.5	15.1	15.2	17.8	21.4	26.4	30.8	28.7	24.9	21.2	19.5	18.5	19.0	19.3			
85	3.01	2.46	1.76	1.05	0.92	1.70	3.67	8.48	15.1	10.3	5.86	3.38	2.86	2.52	3.39	4.01			
90	0.27	0.29	0.27	0.27	0.24	0.24	0.24	0.31	0.57	0.30	0.28	0.30	0.29	0.31	0.31	0.32			
95	0.31	0.37	0.29	0.34	0.41	0.43	0.24	0.31	0.35	0.29	0.35	0.34	0.37	0.32	0.39	0.34			
100	0.39	0.44	0.38	0.41	0.34	0.41	0.32	0.39	0.42	0.37	0.44	0.39	0.45	0.40	0.48	0.42			
105	0.48	0.53	0.46	0.51	0.42	0.47	0.40	0.47	0.52	0.45	0.52	0.48	0.56	0.50	0.57	0.52			
110	0.58	0.63	0.55	0.60	0.52	0.56	0.50	0.56	0.61	0.56	0.62	0.57	0.65	0.60	0.68	0.62			
115	0.67	0.73	0.65	0.71	0.62	0.67	0.59	0.65	0.72	0.66	0.73	0.67	0.77	0.71	0.78	0.72			
120	0.77	0.83	0.76	0.81	0.72	0.77	0.70	0.75	0.82	0.75	0.84	0.78	0.86	0.82	0.88	0.84			
125	0.88	0.92	0.85	0.90	0.81	0.86	0.77	0.85	0.92	0.86	0.93	0.88	0.97	0.91	0.99	0.93			
130	0.98	1.01	0.94	0.99	0.92	0.96	0.88	0.93	1.02	0.95	1.02	0.98	1.06	1.00	1.07	1.04			
135	1.06	1.11	1.03	1.08	1.01	1.05	0.97	1.03	1.11	1.04	1.11	1.07	1.16	1.11	1.16	1.11			
140	1.15	1.20	1.12	1.19	1.12	1.15	1.07	1.13	1.19	1.12	1.20	1.16	1.24	1.20	1.24	1.19			
145	1.23	1.29	1.21	1.27	1.20	1.23	1.16	1.22	1.29	1.22	1.29	1.23	1.33	1.26	1.32	1.27			
150	1.32	1.37	1.30	1.36	1.29	1.33	1.25	1.32	1.37	1.30	1.36	1.30	1.39	1.34	1.40	1.34			
155	1.42	1.46	1.38	1.45	1.37	1.41	1.33	1.40	1.44	1.37	1.44	1.38	1.47	1.41	1.47	1.41			
160	1.47	1.53	1.47	1.54	1.45	1.49	1.42	1.48	1.53	1.44	1.52	1.45	1.57	1.49	1.57	1.50			
165	1.55	1.60	1.54	1.61	1.54	1.57	1.49	1.57	1.61	1.52	1.59	1.53	1.64	1.55	1.62	1.55			
170	1.61	1.67	1.62	1.67	1.59	1.64	1.59	1.64	1.67	1.60	1.65	1.58	1.67	1.61	1.67	1.61			
175	1.66	1.71	1.68	1.70	1.65	1.69	1.65	1.69	1.70	1.66	1.71	1.64	1.69	1.66	1.69	1.65			
180	1.68	1.71	1.69	1.70	1.68	1.69	1.69	1.69	1.69	1.69	1.71	1.68	1.69	1.68	1.69	1.68			

C Range: 0 - 360DEG  
 C Interval: 22.5DEG  
 Test Speed: HIGH  
 Temperature:25.3°C  
 Operators:DAMIN  
 Test Date:2023-11-18

γ Range: 0 - 180DEG  
 γ Interval: 5.0DEG  
 Test System:EVERFINE GO-2000B\_V1 SYSTEM V2.00.473  
 Humidity:65.0%  
 Test Distance:9.401m [K=1.0000]  
 Remarks: