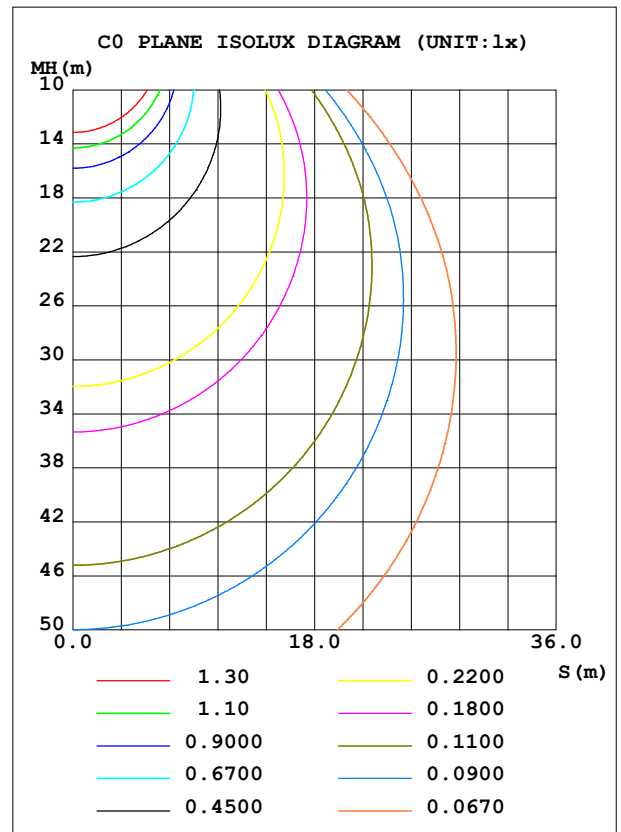
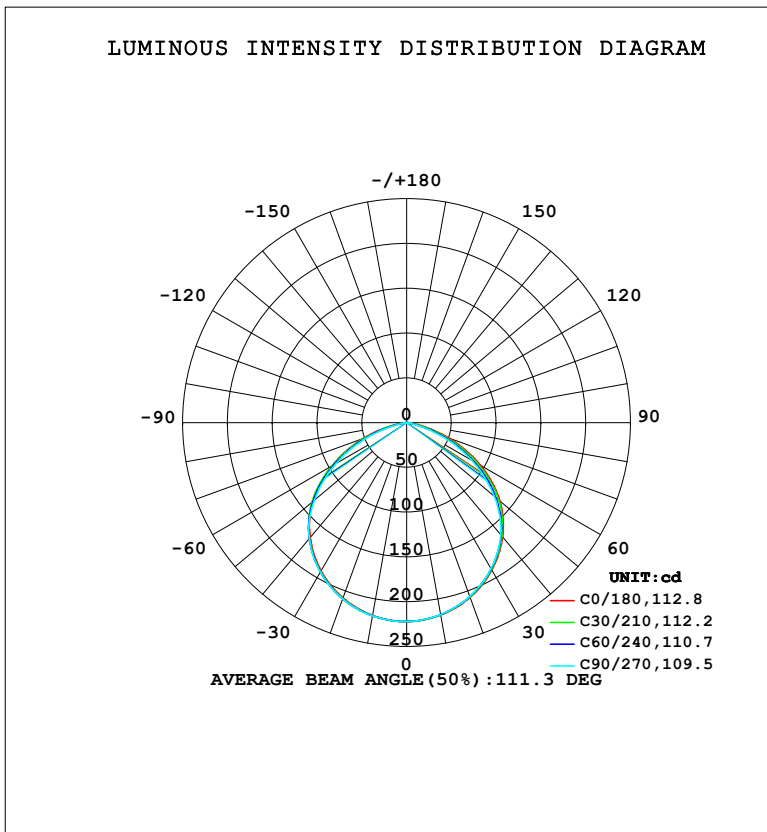


LUMINAIRE PHOTOMETRIC TEST REPORT

Test:U:220.41V I:0.0975A P:9.3339W PF:0.4345 Freq:50.00Hz Lamp Flux:598.922x1 lm		
NAME:	TYPE: 面板灯	WEIGHT:
SPEC.:	DIM.:	SERIAL No.:
MFR.: EVERFINE	SUR.: 78mm	Shielding Angle:

DATA OF LAMP		PHOTOMETRIC DATA				Eff: 64.17 lm/W
MODEL	123R	I _{max} (cd)	222.1	S/MH (C0/180)	1.28	
NOMINAL POWER (W)	9	LOR (%)	100.0	S/MH (C90/270)	1.29	
RATED VOLTAGE (V)	220	TOTAL FLUX (lm)	598.92	η UP, DN (C0-180)	0.0, 49.2	
NOMINAL FLUX (lm)	598.922	CIE CLASS	DIRECT	η UP, DN (C180-360)	0.0, 50.8	
LAMPS INSIDE	1	η up (%)	0.0	CIBSE SHR NOM	1.25	
TEST VOLTAGE (V)	219.5	η down (%)	100.0	CIBSE SHR MAX	1.35	



C Range: 0 - 360DEG
C Interval: 15.0DEG
Test Speed: HIGH
Temperature: 25.3°C
Operators: DAMIN
Test Date: 2023-12-15

γ Range: 0 - 90DEG
γ Interval: 1.0DEG
Test System: EVERFINE GO-2000B_V1 SYSTEM V2.00.473
Humidity: 65.0%
Test Distance: 9.401m [K=1.0000]
Remarks:

ZONAL FLUX DIAGRAM

ZONAL FLUX DIAGRAM:

γ	C0	C45	C90	C135	C180	C225	C270	C315	γ	Φ zone	Φ total	%lum, lamp
10	218.3	218.0	217.7	218.1	218.5	219.1	219.2	218.9	0- 10	21.03	21.03	3.51,3.51
20	207.6	207.0	206.4	207.0	208.1	209.1	209.4	208.8	10- 20	60.43	81.46	13.6,13.6
30	190.3	189.5	188.4	189.6	191.0	192.2	192.8	191.8	20- 30	92.26	173.7	29,29
40	166.7	165.3	163.7	165.4	167.6	168.9	169.1	168.4	30- 40	112.4	286.1	47.8,47.8
50	136.0	132.7	127.4	132.7	137.2	137.2	134.5	136.5	40- 50	117.0	403.1	67.3,67.3
60	94.83	89.47	83.53	89.28	96.04	94.30	91.14	93.59	50- 60	101.5	504.6	84.2,84.2
70	50.00	43.19	36.56	43.04	50.95	47.54	43.45	46.95	60- 70	67.62	572.2	95.5,95.5
80	9.560	3.198	2.172	4.013	10.49	6.563	3.337	5.780	70- 80	25.11	597.3	99.7,99.7
90	0.2320	0.2103	0.1931	0.2057	0.2736	0.2704	0.2354	0.2541	80- 90	1.628	598.9	100,100
100									90-100			
110									100-110			
120									110-120			
130									120-130			
140									130-140			
150									140-150			
160									150-160			
170									160-170			
180									170-180			
DEG	LUMINOUS INTENSITY:cd									UNIT:lm		

Conical surface Flux(90deg): 345.17 lm

%lum = 57.6%

%lamp = 57.6%

Conical surface Flux(130deg): 543.45 lm

%lum = 90.7%

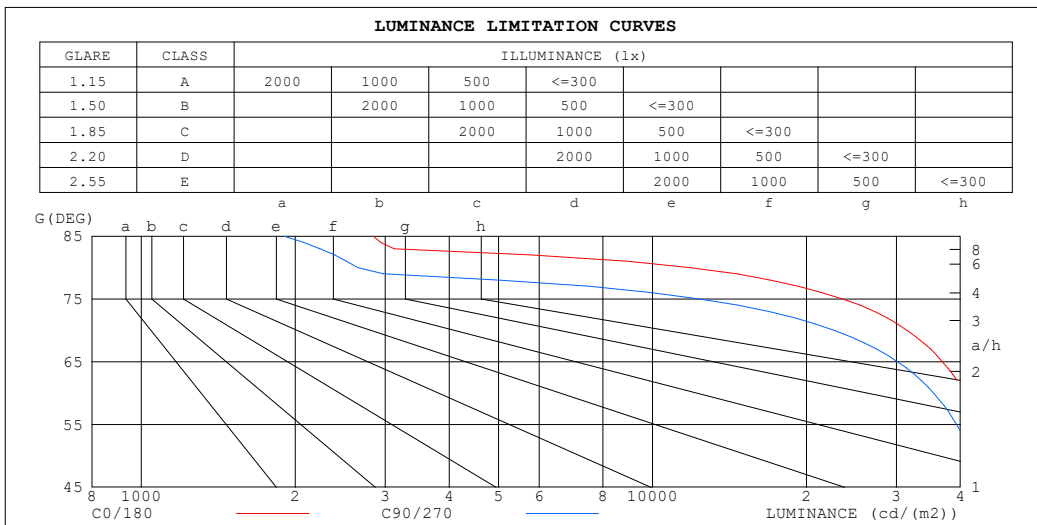
%lamp = 90.7%

C Range: 0 - 360DEG
 C Interval: 15.0DEG
 Test Speed: HIGH
 Temperature:25.3°C
 Operators:DAMIN
 Test Date:2023-12-15

γ Range: 0 - 90DEG
 γ Interval: 1.0DEG
 Test System:EVERFINE GO-2000B_V1 SYSTEM V2.00.473
 Humidity:65.0%
 Test Distance:9.401m [K=1.0000]
 Remarks:

LUMINANCE LIMITATION CURVES

Test:U:220.41V I:0.0975A P:9.3339W PF:0.4345 Freq:50.00Hz Lamp Flux:598.922x1 lm		
NAME:	TYPE: 面板灯	WEIGHT:
SPEC.:	DIM.:	SERIAL No.:
MFR.: EVERFINE	SUR.: 78mm	Shielding Angle:



LUMINANCE cd/(m2)		
G (DEG)	C0/180	C90/270
85	2845	1903
80	11857	2655
75	23550	12360
70	31483	22695
65	36881	30116
60	40845	35464
55	43723	39341
50	45564	42084
45	46400	44179

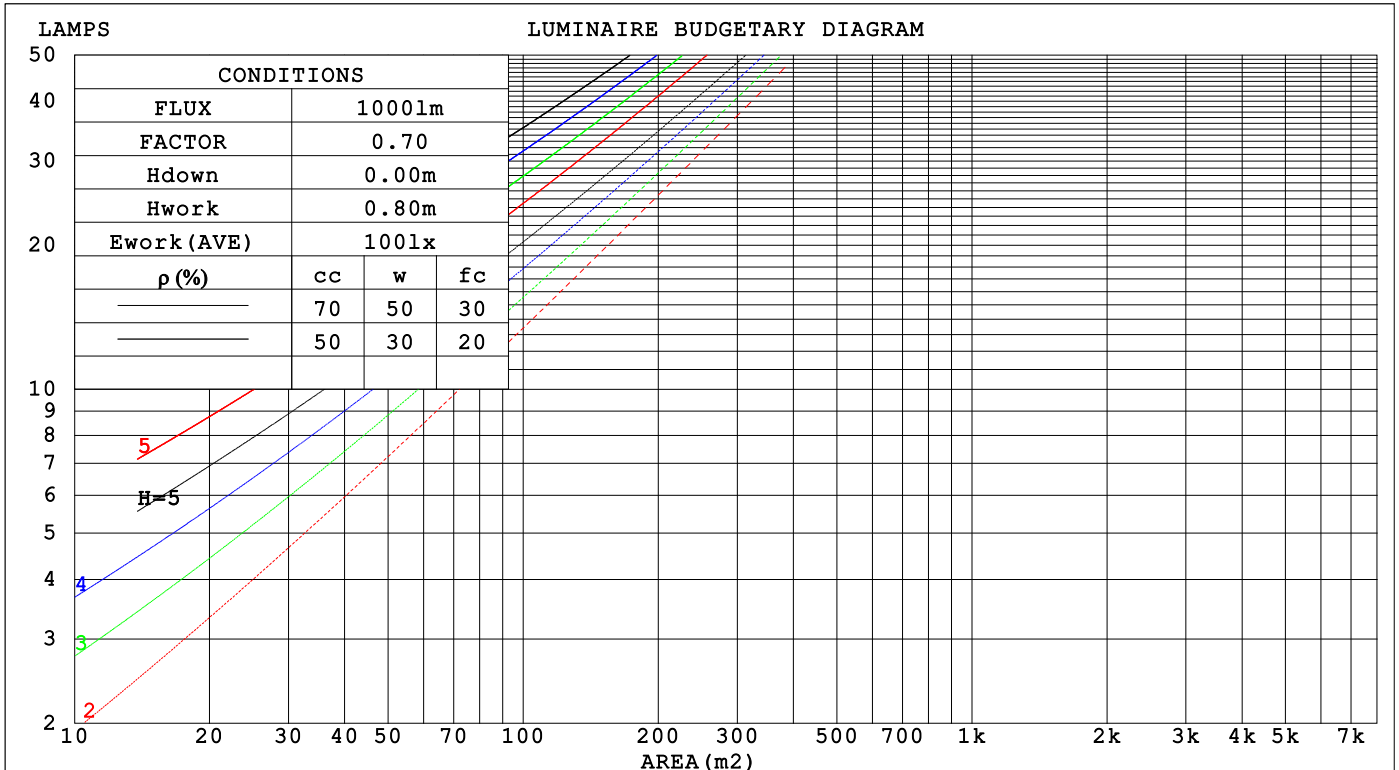
C Range: 0 - 360DEG
 C Interval: 15.0DEG
 Test Speed: HIGH
 Temperature: 25.3°C
 Operators: DAMIN
 Test Date: 2023-12-15

γ Range: 0 - 90DEG
 γ Interval: 1.0DEG
 Test System: EVERFINE GO-2000B_V1 SYSTEM V2.00.473
 Humidity: 65.0%
 Test Distance: 9.401m [K=1.0000]
 Remarks:

CU AND LUMINAIRE BUDGETARY ESTIMATE DIAGRAM

Test:U:220.41V I:0.0975A P:9.3339W PF:0.4345 Freq:50.00Hz Lamp Flux:598.922x1 lm		
NAME:	TYPE: 面板灯	WEIGHT:
SPEC.:	DIM.:	SERIAL No.:
MFR.: EVERFINE	SUR.: 78mm	Shielding Angle:

ρcc	80%			70%			50%			30%			10%			0
ρw	50%	30%	10%	50%	30%	10%	50%	30%	10%	50%	30%	10%	50%	30%	10%	0
ρfc	20%			20%			20%			20%			20%			0
RCR	RCR:Room Cavity Ratio															
	Coefficients of Utilization(CU)															
0.0	1.19	1.19	1.19	1.16	1.16	1.16	1.11	1.11	1.11	1.06	1.06	1.06	1.02	1.02	1.02	1.00
1.0	1.06	1.02	.98	1.03	.90	.97	.99	.96	.94	.95	.93	.91	.92	.90	.88	.86
2.0	.93	.86	.81	.91	.85	.80	.87	.82	.78	.84	.80	.76	.81	.78	.75	.73
3.0	.82	.74	.68	.80	.73	.67	.77	.71	.66	.75	.69	.65	.72	.68	.64	.62
4.0	.73	.64	.58	.71	.63	.57	.69	.62	.57	.67	.61	.56	.64	.59	.55	.53
5.0	.65	.56	.50	.64	.56	.50	.62	.55	.49	.60	.53	.48	.58	.52	.48	.46
6.0	.58	.50	.43	.58	.49	.43	.56	.48	.43	.54	.48	.43	.53	.47	.42	.40
7.0	.53	.44	.38	.52	.44	.38	.51	.43	.38	.49	.43	.38	.48	.42	.37	.35
8.0	.48	.40	.34	.48	.40	.34	.46	.39	.34	.45	.39	.34	.44	.38	.34	.32
9.0	.44	.36	.31	.44	.36	.31	.43	.36	.31	.42	.35	.30	.41	.35	.30	.28
10.0	.41	.33	.28	.40	.33	.28	.39	.32	.28	.38	.32	.28	.38	.32	.27	.26



C Range: 0 - 360DEG
 C Interval: 15.0DEG
 Test Speed: HIGH
 Temperature:25.3°C
 Operators:DAMIN
 Test Date:2023-12-15

γ Range: 0 - 90DEG
 γ Interval: 1.0DEG
 Test System:EVERFINE GO-2000B_V1 SYSTEM V2.00.473
 Humidity:65.0%
 Test Distance:9.401m [K=1.0000]
 Remarks:

WEC AND CCEC

Test:U:220.41V I:0.0975A P:9.3339W PF:0.4345 Freq:50.00Hz								
Lamp Flux:598.922x1 lm								
NAME:			TYPE: 面板灯			WEIGHT:		
SPEC.:			DIM.:			SERIAL No.:		
MFR.: EVERFINE			SUR.: 78mm			Shielding Angle:		

ρ _{CC}	80%			70%			50%			30%			10%			0
ρ _w	50%	30%	10%	50%	30%	10%	50%	30%	10%	50%	30%	10%	50%	30%	10%	0
ρ _{fc}	20%			20%			20%			20%			20%			0
RCR	RCR:Room Cavity Ratio						Wall Exitance Coefficients (WEC)									
0.0																
1.0	.277	.157	.050	.270	.154	.049	.257	.147	.047	.245	.141	.045	.234	.135	.044	
2.0	.270	.148	.045	.264	.145	.045	.252	.140	.044	.241	.135	.042	.232	.131	.041	
3.0	.254	.135	.041	.249	.133	.040	.239	.129	.039	.229	.126	.039	.221	.122	.038	
4.0	.238	.124	.036	.233	.122	.036	.224	.119	.035	.216	.116	.035	.208	.113	.034	
5.0	.222	.113	.033	.218	.112	.033	.210	.109	.032	.202	.107	.032	.195	.104	.031	
6.0	.207	.104	.030	.203	.103	.030	.196	.101	.029	.190	.099	.029	.183	.097	.029	
7.0	.194	.096	.027	.190	.095	.027	.184	.093	.027	.178	.091	.027	.172	.090	.026	
8.0	.182	.089	.025	.179	.088	.025	.173	.086	.025	.168	.085	.024	.162	.083	.024	
9.0	.171	.083	.023	.168	.082	.023	.163	.081	.023	.158	.079	.023	.153	.078	.023	
10.0	.161	.077	.021	.159	.077	.021	.154	.075	.021	.149	.074	.021	.145	.073	.021	

ρ _{CC}	80%			70%			50%			30%			10%			0
ρ _w	50%	30%	10%	50%	30%	10%	50%	30%	10%	50%	30%	10%	50%	30%	10%	0
ρ _{fc}	20%			20%			20%			20%			20%			0
RCR	RCR:Room Cavity Ratio						Ceiling Cavity Exitance Coefficients (CCEC)									
0.0																
1.0	.190	.190	.190	.163	.163	.163	.111	.111	.111	.064	.064	.064	.020	.020	.020	
2.0	.178	.156	.137	.152	.134	.118	.104	.092	.082	.060	.053	.047	.019	.017	.015	
3.0	.169	.132	.101	.145	.114	.087	.099	.079	.061	.057	.046	.036	.018	.015	.012	
4.0	.161	.114	.076	.138	.099	.066	.095	.068	.047	.055	.040	.027	.018	.013	.009	
5.0	.154	.101	.060	.132	.087	.052	.091	.061	.037	.053	.036	.022	.017	.012	.007	
6.0	.147	.090	.048	.126	.078	.042	.087	.055	.030	.050	.032	.018	.016	.010	.006	
7.0	.140	.082	.040	.120	.071	.035	.083	.050	.025	.048	.029	.015	.016	.010	.005	
8.0	.134	.075	.034	.115	.065	.030	.079	.046	.021	.046	.027	.012	.015	.009	.004	
9.0	.127	.069	.029	.110	.060	.025	.076	.042	.018	.044	.025	.011	.014	.008	.004	
10.0	.121	.064	.026	.105	.056	.022	.072	.039	.016	.042	.023	.009	.014	.008	.003	
10.0	.116	.060	.023	.100	.052	.020	.069	.037	.014	.040	.022	.008	.013	.007	.003	

C Range: 0 - 360DEG
 C Interval: 15.0DEG
 Test Speed: HIGH
 Temperature:25.3°C
 Operators:DAMIN
 Test Date:2023-12-15

γ Range: 0 - 90DEG
 γ Interval: 1.0DEG
 Test System:EVERFINE GO-2000B_V1 SYSTEM V2.00.473
 Humidity:65.0%
 Test Distance:9.401m [K=1.0000]
 Remarks:

UGR(Unified Glare Rating) Table

Test:U:220.41V I:0.0975A P:9.3339W PF:0.4345 Freq:50.00Hz										
Lamp Flux:598.922x1 lm										
NAME:		TYPE: 面板灯				WEIGHT:				
SPEC.:		DIM.:				SERIAL No.:				
MFR.: EVERFINE		SUR.: 78mm				Shielding Angle:				
ceiling/cavity	0.7	0.7	0.5	0.5	0.3	0.7	0.7	0.5	0.5	0.3
walls	0.5	0.3	0.5	0.3	0.3	0.5	0.3	0.5	0.3	0.3
working plane	0.2	0.2	0.2	0.2	0.2	0.2	0.2	0.2	0.2	0.2
Room dimensions	Viewed crosswise					Viewed endwise				
x = 2H y = 2H	27.8	29.3	28.1	29.5	29.7	27.3	28.8	27.6	29.0	29.2
3H	29.0	30.3	29.3	30.6	30.8	28.2	29.5	28.5	29.8	30.0
4H	29.3	30.6	29.6	30.8	31.1	28.3	29.6	28.6	29.8	30.1
6H	29.4	30.6	29.7	30.8	31.1	28.2	29.4	28.5	29.7	29.9
8H	29.3	30.5	29.6	30.7	31.0	28.1	29.3	28.5	29.6	29.9
12H	29.3	30.4	29.6	30.7	31.0	28.1	29.2	28.4	29.5	29.8
4H 2H	28.3	29.5	28.6	29.8	30.0	27.8	29.1	28.2	29.4	29.6
3H	29.5	30.6	29.9	30.9	31.2	28.8	29.9	29.1	30.2	30.5
4H	29.9	30.9	30.3	31.2	31.6	28.9	30.0	29.3	30.3	30.6
6H	30.0	30.9	30.4	31.2	31.6	28.9	29.8	29.3	30.1	30.5
8H	30.0	30.8	30.4	31.1	31.5	28.8	29.7	29.3	30.0	30.4
12H	29.9	30.7	30.3	31.1	31.5	28.8	29.6	29.2	29.9	30.3
8H 4H	29.9	30.7	30.3	31.1	31.5	29.0	29.8	29.4	30.2	30.6
6H	30.0	30.7	30.5	31.1	31.5	28.9	29.6	29.4	30.0	30.5
8H	30.0	30.6	30.4	31.0	31.5	28.9	29.5	29.4	29.9	30.4
12H	30.0	30.5	30.4	30.9	31.4	28.9	29.4	29.4	29.8	30.3
12H 4H	29.9	30.6	30.3	31.0	31.4	29.0	29.7	29.4	30.1	30.5
6H	30.0	30.6	30.4	31.0	31.4	28.9	29.5	29.4	29.9	30.4
8H	30.0	30.5	30.4	30.9	31.4	28.9	29.4	29.4	29.8	30.3
Variations with the observer position at spacings(CIE Pub.117):										
S = 1.0H	+ 0.3 / - 0.3					+ 0.3 / - 0.4				
1.5H	+ 0.2 / - 0.5					+ 0.3 / - 0.6				
2.0H	+ 0.5 / - 0.5					+ 0.5 / - 0.6				

CIE Pub.117, 598.9 lm Total Lamp Luminous Flux Correct (8log(F/F0) = -1.8)
 Area: 0.0047 m2

C Range: 0 - 360DEG
 C Interval: 15.0DEG
 Test Speed: HIGH
 Temperature:25.3°C
 Operators:DAMIN
 Test Date:2023-12-15

γ Range: 0 - 90DEG
 γ Interval: 1.0DEG
 Test System:EVERFINE GO-2000B_V1 SYSTEM V2.00.473
 Humidity:65.0%
 Test Distance:9.401m [K=1.0000]
 Remarks:

UTILIZATION FACTORS TABLE

Test:U:220.41V I:0.0975A P:9.3339W PF:0.4345 Freq:50.00Hz Lamp Flux:598.922x1 lm		
NAME:	TYPE: 面板灯	WEIGHT:
SPEC.:	DIM.:	SERIAL No.:
MFR.: EVERFINE	SUR.: 78mm	Shielding Angle:

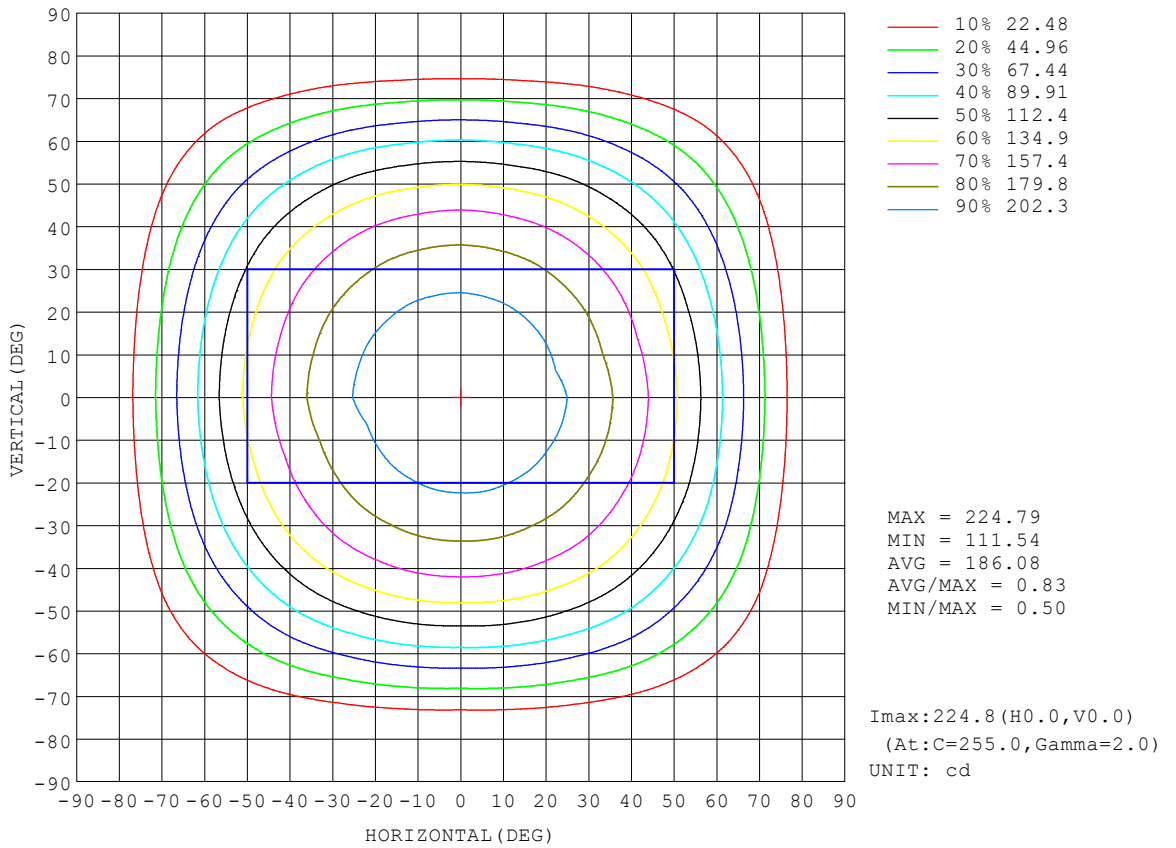
REFLECTANCE										
Ceiling	0.8	0.8	0.8	0.7	0.7	0.7	0.5	0.5	0.5	0
Walls	0.7	0.5	0.3	0.7	0.5	0.3	0.7	0.5	0.3	0
Working plane	0.2	0.2	0.2	0.2	0.2	0.2	0.2	0.2	0.2	0
ROOM INDEX	UTILIZATION FACTORS (PERCENT) $k(RI) \times RCR = 5$									
k = 0.60	59	48	41	58	47	41	57	47	40	34
0.80	69	58	51	68	58	51	67	57	50	44
1.00	78	68	61	77	67	60	75	68	60	53
1.25	85	75	69	84	75	68	81	73	68	61
1.50	90	81	75	89	80	74	86	78	73	66
2.00	97	89	83	95	88	82	92	86	81	74
2.50	101	94	88	99	92	87	95	90	85	77
3.00	104	98	93	102	96	92	98	93	89	81
4.00	108	103	98	105	101	97	101	97	94	86
5.00	110	106	102	108	104	100	103	100	97	88
ROOM INDEX	UF(total)									Direct
According to DIN EN 13032-2 2004			Suspended				SHRNOM = 1.25			

C Range: 0 - 360DEG
 C Interval: 15.0DEG
 Test Speed: HIGH
 Temperature:25.3°C
 Operators:DAMIN
 Test Date:2023-12-15

γ Range: 0 - 90DEG
 γ Interval: 1.0DEG
 Test System:EVERFINE GO-2000B_V1 SYSTEM V2.00.473
 Humidity:65.0%
 Test Distance:9.401m [K=1.0000]
 Remarks:

ISOCANDELA DIAGRAM

Test:U:220.41V I:0.0975A P:9.3339W PF:0.4345 Freq:50.00Hz Lamp Flux:598.922x1 lm		
NAME:	TYPE: 面板灯	WEIGHT:
SPEC.:	DIM.:	SERIAL No.:
MFR.: EVERFINE	SUR.: 78mm	Shielding Angle:

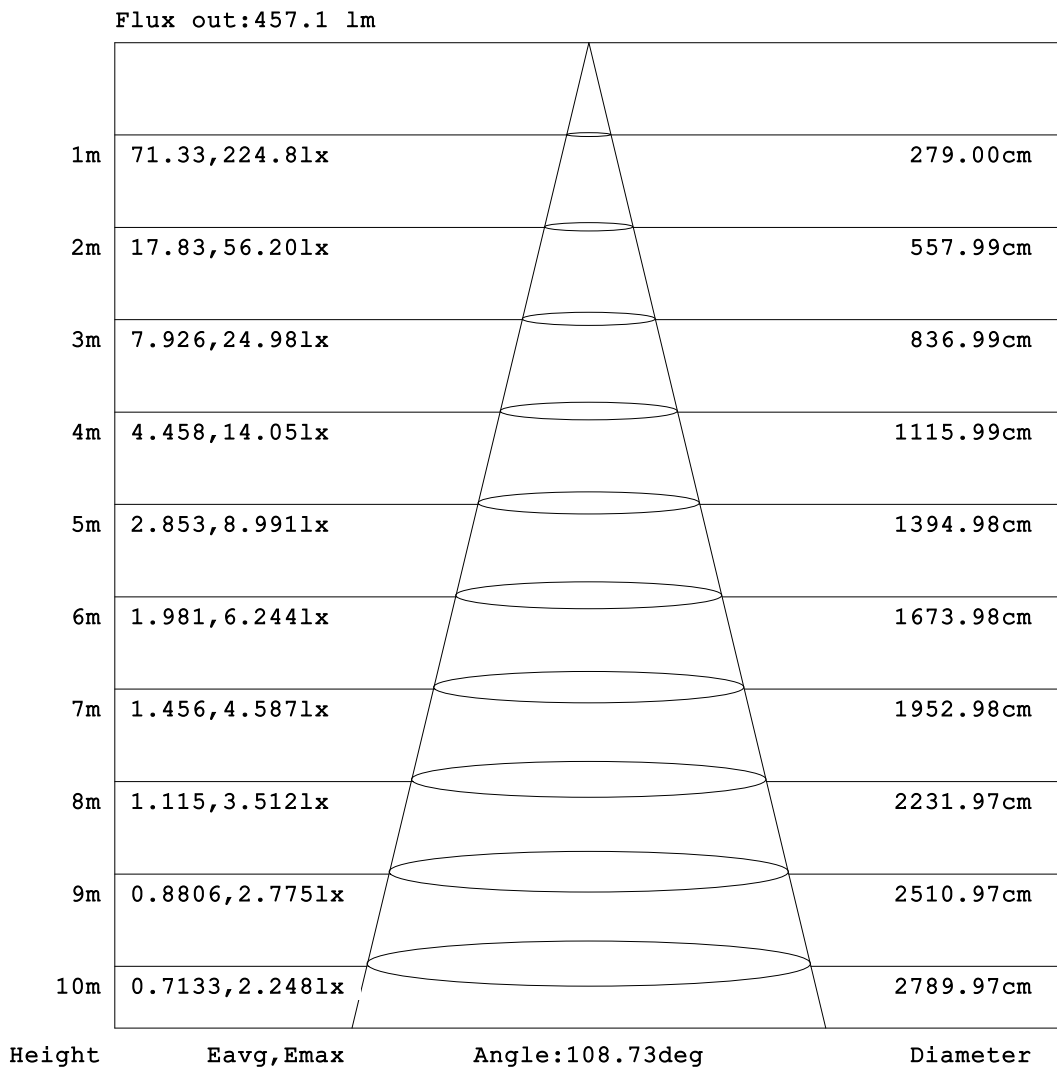


C Range: 0 - 360DEG
 C Interval: 15.0DEG
 Test Speed: HIGH
 Temperature:25.3°C
 Operators:DAMIN
 Test Date:2023-12-15

γ Range: 0 - 90DEG
 γ Interval: 1.0DEG
 Test System:EVERFINE GO-2000B_V1 SYSTEM V2.00.473
 Humidity:65.0%
 Test Distance:9.401m [K=1.0000]
 Remarks:

AAI Figure

Test:U:220.41V I:0.0975A P:9.3339W PF:0.4345 Freq:50.00Hz Lamp Flux:598.922x1 lm		
NAME:	TYPE: 面板灯	WEIGHT:
SPEC.:	DIM.:	SERIAL No.:
MFR.: EVERFINE	SUR.: 78mm	Shielding Angle:



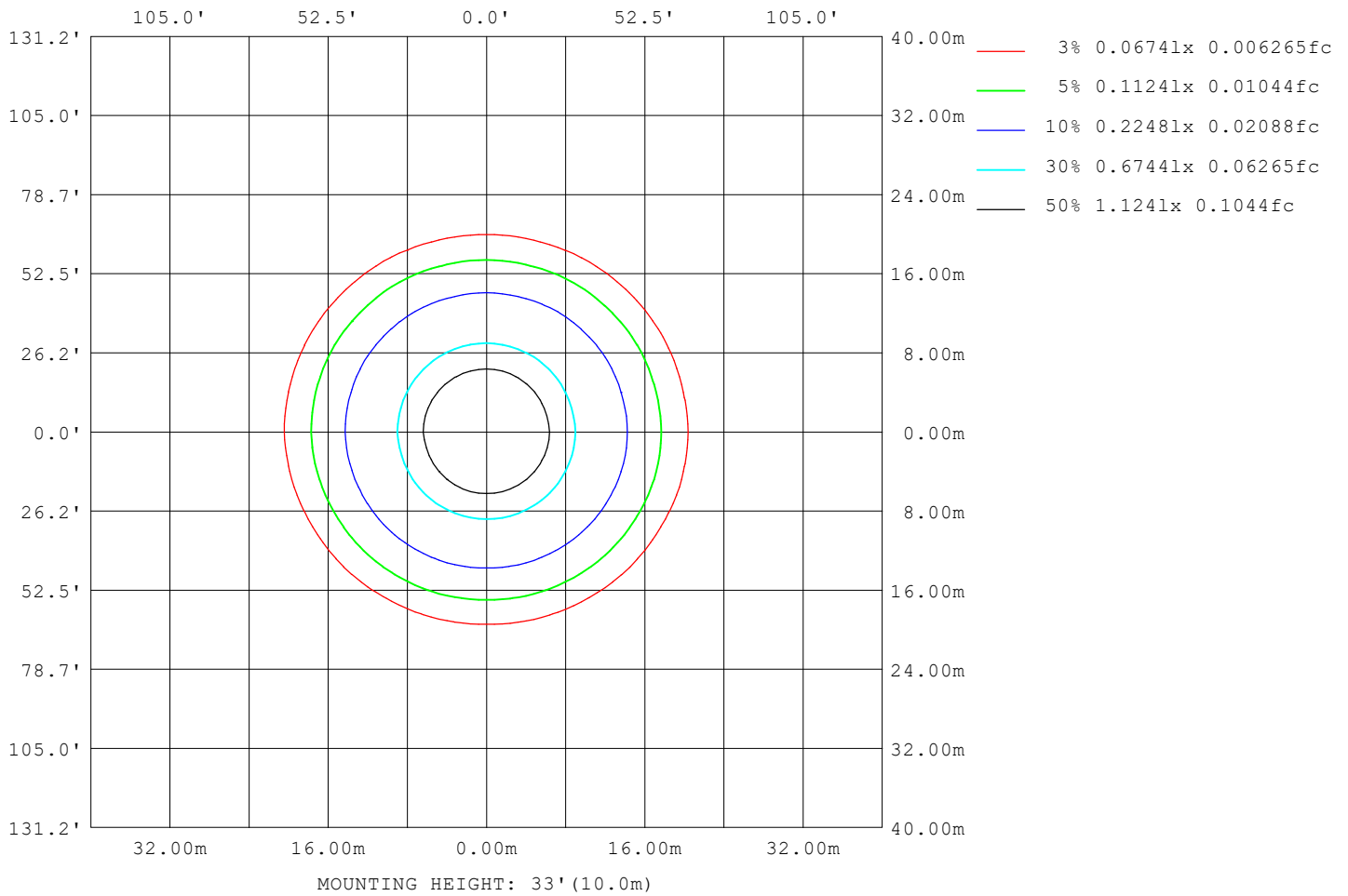
Note: The Curves indicate the illuminated area and the average illumination when the luminaire is at different distance.

C Range: 0 - 360DEG
C Interval: 15.0DEG
Test Speed: HIGH
Temperature: 25.3°C
Operators: DAMIN
Test Date: 2023-12-15

γ Range: 0 - 90DEG
γ Interval: 1.0DEG
Test System: EVERFINE GO-2000B_V1 SYSTEM V2.00.473
Humidity: 65.0%
Test Distance: 9.401m [K=1.0000]
Remarks:

ISOLUX DIAGRAM

Test:U:220.41V I:0.0975A P:9.3339W PF:0.4345 Freq:50.00Hz Lamp Flux:598.922x1 lm		
NAME:	TYPE: 面板灯	WEIGHT:
SPEC.:	DIM.:	SERIAL No.:
MFR.: EVERFINE	SUR.: 78mm	Shielding Angle:



C Range: 0 - 360DEG
 C Interval: 15.0DEG
 Test Speed: HIGH
 Temperature:25.3°C
 Operators:DAMIN
 Test Date:2023-12-15

γ Range: 0 - 90DEG
 γ Interval: 1.0DEG
 Test System:EVERFINE GO-2000B_V1 SYSTEM V2.00.473
 Humidity:65.0%
 Test Distance:9.401m [K=1.0000]
 Remarks:

LED Avg.L Report

Test:U:220.41V I:0.0975A P:9.3339W PF:0.4345 Freq:50.00Hz Lamp Flux:598.922x1 lm		
NAME:	TYPE: 面板灯	WEIGHT:
SPEC.:	DIM.:	SERIAL No.:
MFR.: EVERFINE	SUR.: 78mm	Shielding Angle:

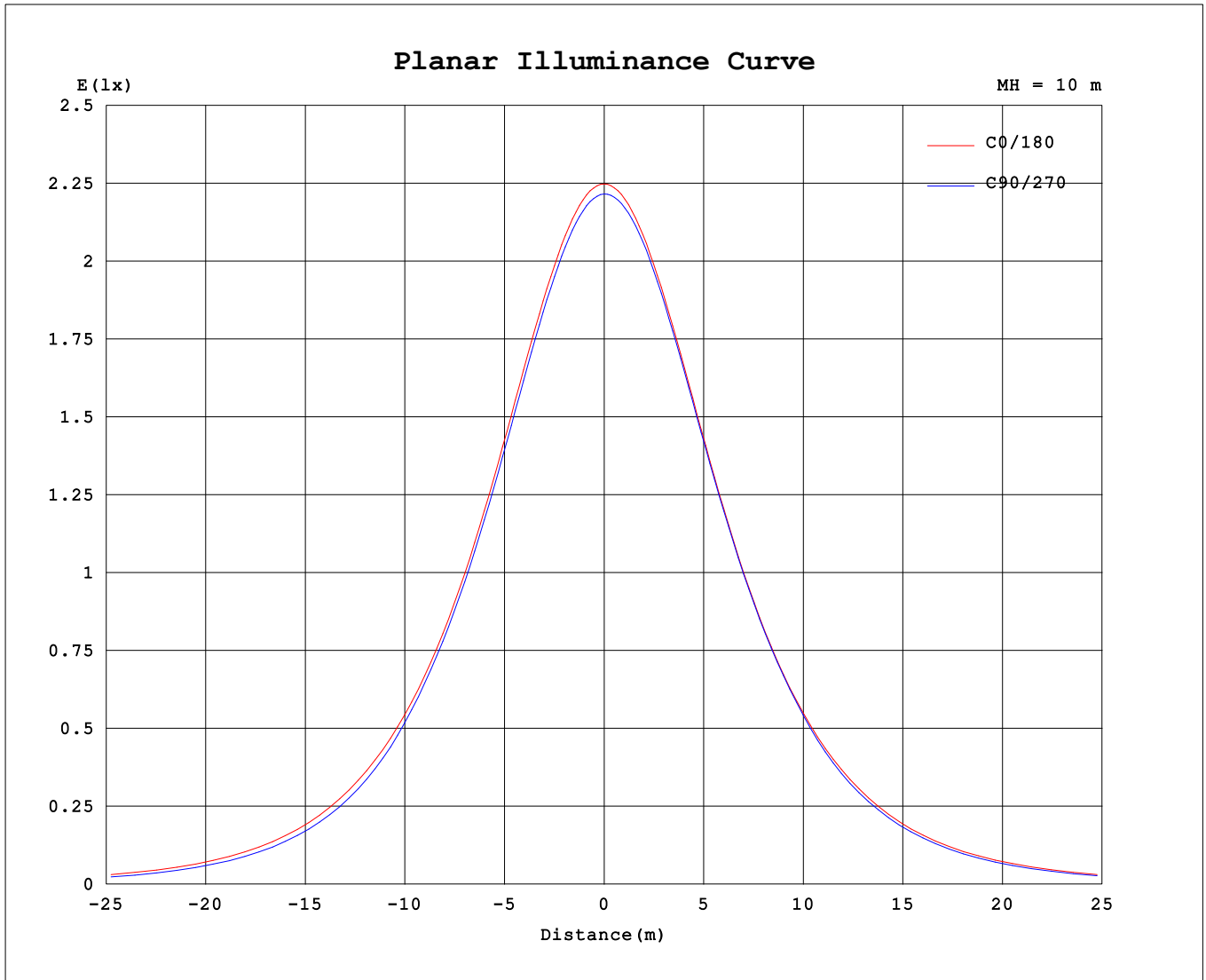
AvgL	cd/m2
L_0~180 (65) av	36719
L_0~180 (75) av	23744
L_0~180 (85) av	2933
L_90~270 (65) av	32063
L_90~270 (75) av	14769
L_90~270 (85) av	2254
L_45 (65) av	34514
L_45 (75) av	18864
L_45 (85) av	2363

Standard: GB/T 29293-2012

C Range: 0 - 360DEG
 C Interval: 15.0DEG
 Test Speed: HIGH
 Temperature:25.3°C
 Operators:DAMIN
 Test Date:2023-12-15

γ Range: 0 - 90DEG
 γ Interval: 1.0DEG
 Test System:EVERFINE GO-2000B_V1 SYSTEM V2.00.473
 Humidity:65.0%
 Test Distance:9.401m [K=1.0000]
 Remarks:

Planar Illuminance Curve



C Range: 0 - 360DEG
 C Interval: 15.0DEG
 Test Speed: HIGH
 Temperature: 25.3°C
 Operators: DAMIN
 Test Date: 2023-12-15

γ Range: 0 - 90DEG
 γ Interval: 1.0DEG
 Test System: EVERFINE GO-2000B_V1 SYSTEM V2.00.473
 Humidity: 65.0%
 Test Distance: 9.401m [K=1.0000]
 Remarks:

LUMINOUS DISTRIBUTION INTENSITY DATA

Test:U:220.41V I:0.0975A P:9.3339W PF:0.4345 Freq:50.00Hz Lamp Flux:598.922x1 lm		
NAME:	TYPE: 面板灯	WEIGHT:
SPEC.:	DIM.:	SERIAL No.:
MFR.: EVERFINE	SUR.: 78mm	Shielding Angle:

Table--1

UNIT: cd

γ (DEG) \ C (DEG)	0	15	30	45	60	75	90	105	120	135	150	165	180	195	210	225	240	255	270
0	222	222	222	222	222	222	222	222	222	222	222	222	222	222	222	222	222	222	222
5	221	221	221	221	221	221	221	221	221	221	221	221	221	221	221	222	221	222	222
10	218	218	218	218	218	218	218	218	218	218	218	218	219	219	219	219	219	219	219
15	214	214	213	213	213	213	213	213	213	213	214	214	214	214	215	215	215	215	215
20	208	208	207	207	207	207	206	207	207	207	207	208	208	208	209	209	209	209	209
25	200	200	199	199	198	199	198	199	199	199	199	200	200	201	201	201	202	202	202
30	190	190	189	189	189	189	188	189	189	190	190	191	191	191	192	192	193	193	193
35	179	179	178	178	177	177	177	177	177	178	178	180	180	180	181	181	182	182	182
40	167	167	166	165	164	164	164	164	164	165	166	167	168	168	169	169	169	169	169
45	152	152	151	151	149	148	147	148	149	151	151	153	153	154	155	155	154	154	154
50	136	136	134	133	130	129	127	129	130	133	135	136	137	138	138	137	136	135	135
55	116	116	114	112	109	108	106	107	109	112	114	116	118	118	118	117	116	114	114
60	94.8	94.4	91.3	89.5	86.5	85.0	83.5	84.8	86.3	89.3	91.4	94.8	96.0	96.2	95.9	94.3	93.4	91.4	91.1
65	72.4	71.7	68.4	66.5	63.2	61.6	60.0	61.3	62.8	66.2	68.4	71.9	73.5	73.4	72.9	71.1	69.8	67.8	67.4
70	50.0	48.9	45.5	43.2	39.9	38.2	36.6	37.9	39.7	43.0	45.6	49.1	51.0	50.7	49.7	47.5	46.1	43.9	43.5
75	28.3	27.0	23.4	20.9	17.9	16.5	15.1	16.3	18.1	21.2	23.9	27.5	29.5	28.9	27.5	25.2	23.5	21.4	20.9
80	9.56	8.01	5.41	3.20	2.23	2.16	2.17	2.17	2.28	4.01	6.44	9.16	10.5	10.1	8.91	6.56	4.32	3.05	3.34
85	1.15	1.05	0.94	0.77	0.77	0.74	0.78	0.76	0.81	0.83	1.02	1.15	1.25	1.37	1.25	1.19	1.10	1.13	1.07
90	0.23	0.26	0.22	0.21	0.20	0.20	0.19	0.19	0.21	0.21	0.22	0.30	0.27	0.37	0.28	0.27	0.25	0.25	0.24

C Range: 0 - 360DEG
 C Interval: 15.0DEG
 Test Speed: HIGH
 Temperature:25.3°C
 Operators:DAMIN
 Test Date:2023-12-15

γ Range: 0 - 90DEG
 γ Interval: 1.0DEG
 Test System:EVERFINE GO-2000B_V1 SYSTEM V2.00.473
 Humidity:65.0%
 Test Distance:9.401m [K=1.0000]
 Remarks:

LUMINOUS DISTRIBUTION INTENSITY DATA

Test:U:220.41V I:0.0975A P:9.3339W PF:0.4345 Freq:50.00Hz		
Lamp Flux:598.922x1 lm		
NAME:	TYPE: 面板灯	WEIGHT:
SPEC.:	DIM.:	SERIAL No.:
MFR.: EVERFINE	SUR.: 78mm	Shielding Angle:

Table--2

UNIT: cd

C (DEG) \ γ (DEG)	285	300	315	330	345																			
0	222	222	222	222	222																			
5	222	221	221	221	221																			
10	219	219	219	219	219																			
15	215	215	215	215	214																			
20	209	209	209	209	208																			
25	202	202	201	201	200																			
30	192	192	192	192	191																			
35	181	182	181	181	180																			
40	169	169	168	168	167																			
45	153	154	154	154	153																			
50	135	136	136	137	137																			
55	114	115	116	117	117																			
60	91.1	92.8	93.6	95.0	95.4																			
65	67.5	69.3	70.5	72.1	72.7																			
70	43.7	45.6	46.9	48.9	49.9																			
75	21.2	23.1	24.5	26.7	28.0																			
80	2.95	3.98	5.78	8.02	9.20																			
85	1.10	1.04	1.08	1.07	1.17																			
90	0.25	0.23	0.25	0.25	0.27																			

C Range: 0 - 360DEG
 C Interval: 15.0DEG
 Test Speed: HIGH
 Temperature:25.3℃
 Operators:DAMIN
 Test Date:2023-12-15

γ Range: 0 - 90DEG
 γ Interval: 1.0DEG
 Test System:EVERFINE GO-2000B_V1 SYSTEM V2.00.473
 Humidity:65.0%
 Test Distance:9.401m [K=1.0000]
 Remarks: