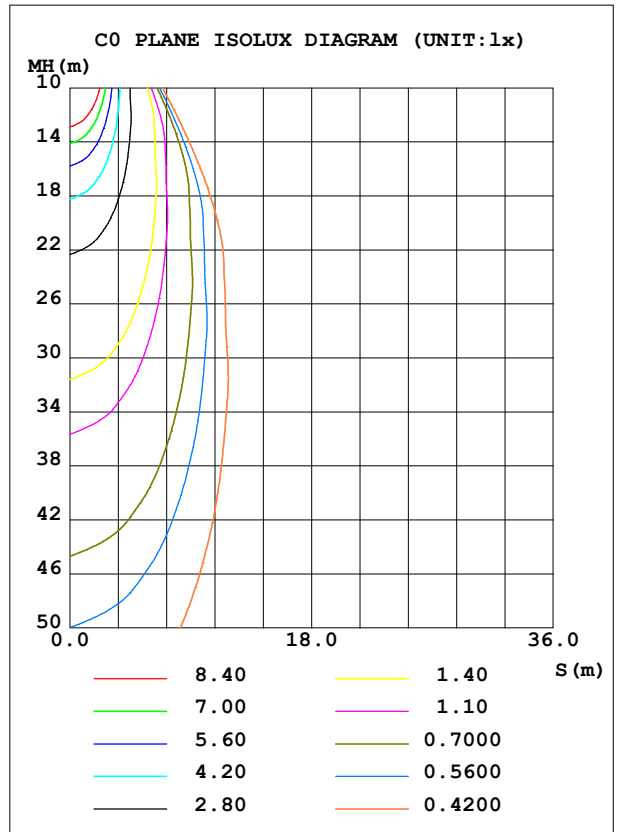
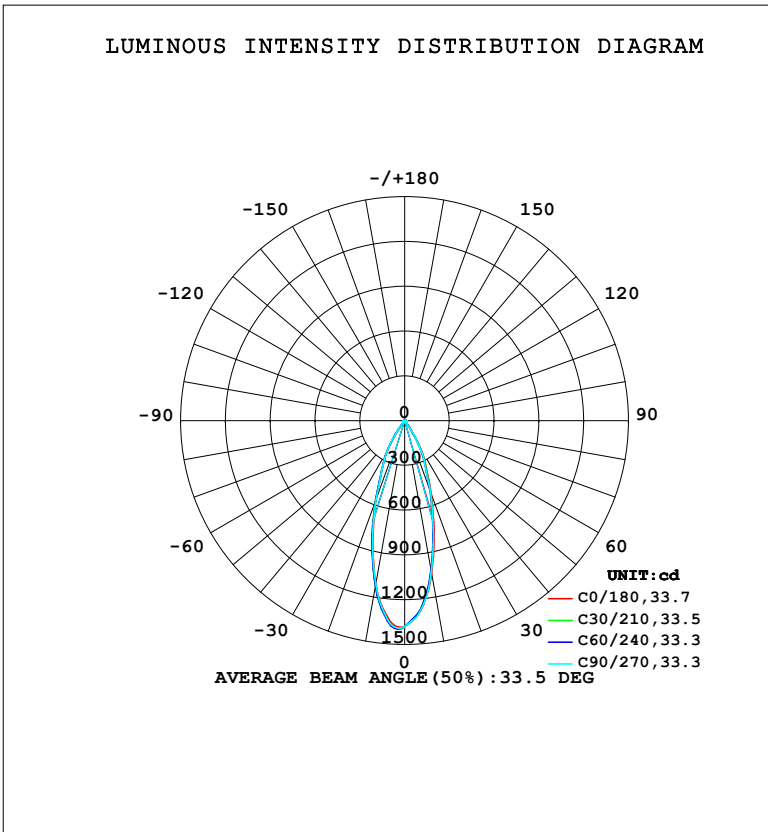


LUMINAIRE PHOTOMETRIC TEST REPORT

Test:U:220.41V I:0.0675A P:7.2475W PF:0.4871 Freq:50.00Hz Lamp Flux:595.367x1 lm		
NAME:	TYPE: 射灯	WEIGHT:
SPEC.:	DIM.:	SERIAL No.:
MFR.: EVERFINE	SUR.: 45mm	Shielding Angle:

DATA OF LAMP		PHOTOMETRIC DATA				Eff: 82.15 lm/W
MODEL	323	I _{max} (cd)	1398	S/MH (C0/180)	0.57	
NOMINAL POWER (W)	7	LOR (%)	100.0	S/MH (C90/270)	0.58	
RATED VOLTAGE (V)	220	TOTAL FLUX (lm)	595.37	η UP, DN (C0-180)	0.0, 48.4	
NOMINAL FLUX (lm)	595.367	CIE CLASS	DIRECT	η UP, DN (C180-360)	0.0, 51.6	
LAMPS INSIDE	1	η up (%)	0.0	CIBSE SHR NOM	0.50	
TEST VOLTAGE (V)	219.5	η down (%)	100.0	CIBSE SHR MAX	0.55	



C Range: 0 - 360DEG
 C Interval: 15.0DEG
 Test Speed: HIGH
 Temperature: 25.3°C
 Operators: DAMIN
 Test Date: 2023-12-15

γ Range: 0 - 90DEG
 γ Interval: 1.0DEG
 Test System: EVERFINE GO-2000B_V1 SYSTEM V2.00.473
 Humidity: 65.0%
 Test Distance: 9.401m [K=1.0000]
 Remarks:

ZONAL FLUX DIAGRAM

ZONAL FLUX DIAGRAM:

γ	C0	C45	C90	C135	C180	C225	C270	C315	γ	Φ zone	Φ total	%lum,lamp
10	1043	1022	1031	1073	1111	1124	1113	1070	0- 10	116.8	116.8	19.6,19.6
20	523.9	508.1	503.1	541.6	566.8	572.1	562.6	536.2	10- 20	217.4	334.2	56.1,56.1
30	212.9	199.1	196.5	221.8	233.7	239.2	238.7	224.4	20- 30	161.4	495.6	83.2,83.2
40	19.77	19.66	19.72	20.38	21.31	20.99	21.17	20.65	30- 40	54.82	550.4	92.4,92.4
50	14.67	14.70	14.77	14.56	14.44	14.70	14.93	14.94	40- 50	12.73	563.1	94.6,94.6
60	12.21	12.06	12.24	11.98	11.56	11.80	12.23	12.15	50- 60	11.96	575.1	96.6,96.6
70	8.805	8.838	8.906	8.632	8.361	8.369	8.563	8.793	60- 70	10.24	585.3	98.3,98.3
80	6.760	5.890	4.128	5.767	6.202	5.942	5.905	6.378	70- 80	7.892	593.2	99.6,99.6
90	0	0	0	0	0	0	0	0	80- 90	2.136	595.4	100,100
100									90-100			
110									100-110			
120									110-120			
130									120-130			
140									130-140			
150									140-150			
160									150-160			
170									160-170			
180									170-180			
DEG	LUMINOUS INTENSITY:cd									UNIT:lm		

Conical surface Flux(90deg): 556.98 lm

%lum = 93.6%

%lamp = 93.6%

Conical surface Flux(130deg): 580.57 lm

%lum = 97.5%

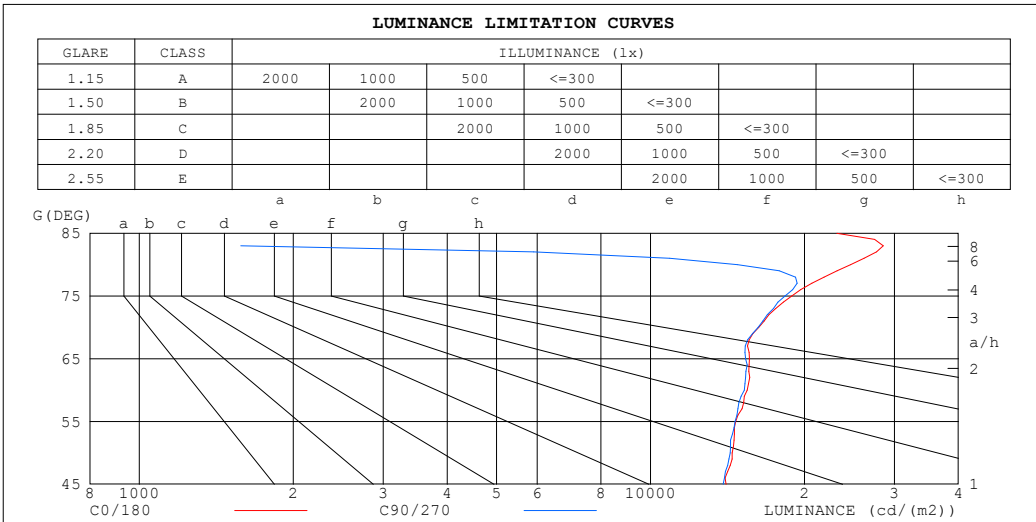
%lamp = 97.5%

C Range: 0 - 360DEG
 C Interval: 15.0DEG
 Test Speed: HIGH
 Temperature:25.3°C
 Operators:DAMIN
 Test Date:2023-12-15

γ Range: 0 - 90DEG
 γ Interval: 1.0DEG
 Test System:EVERFINE GO-2000B_V1 SYSTEM V2.00.473
 Humidity:65.0%
 Test Distance:9.401m [K=1.0000]
 Remarks:

LUMINANCE LIMITATION CURVES

Test:U:220.41V I:0.0675A P:7.2475W PF:0.4871 Freq:50.00Hz Lamp Flux:595.367x1 lm		
NAME:	TYPE: 射灯	WEIGHT:
SPEC.:	DIM.:	SERIAL No.:
MFR.: EVERFINE	SUR.: 45mm	Shielding Angle:



LUMINANCE cd/(m2)		
G (DEG)	C0/180	C90/270
85	23135	389
80	24629	14811
75	18894	18328
70	16289	16223
65	15608	15351
60	15455	15252
55	14668	14629
50	14442	14318
45	14045	13864

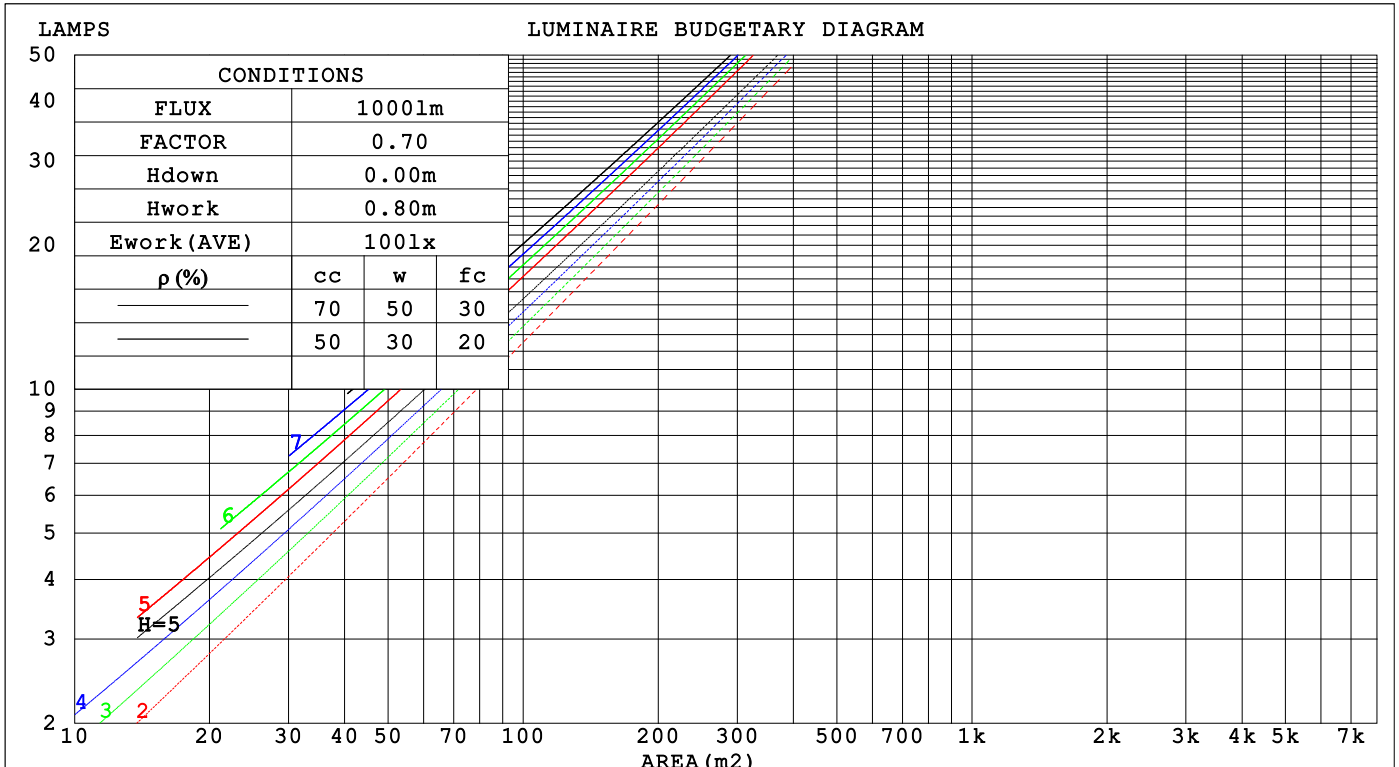
C Range: 0 - 360DEG
 C Interval: 15.0DEG
 Test Speed: HIGH
 Temperature: 25.3°C
 Operators: DAMIN
 Test Date: 2023-12-15

γ Range: 0 - 90DEG
 γ Interval: 1.0DEG
 Test System: EVERFINE GO-2000B_V1 SYSTEM V2.00.473
 Humidity: 65.0%
 Test Distance: 9.401m [K=1.0000]
 Remarks:

CU AND LUMINAIRE BUDGETARY ESTIMATE DIAGRAM

Test:U:220.41V I:0.0675A P:7.2475W PF:0.4871 Freq:50.00Hz Lamp Flux:595.367x1 lm		
NAME:	TYPE: 射灯	WEIGHT:
SPEC.:	DIM.:	SERIAL No.:
MFR.: EVERFINE	SUR.: 45mm	Shielding Angle:

pcc	80%			70%			50%			30%			10%			0
p _w	50%	30%	10%	50%	30%	10%	50%	30%	10%	50%	30%	10%	50%	30%	10%	0
p _{fc}	20%			20%			20%			20%			20%			0
RCR	RCR:Room Cavity Ratio						Coefficients of Utilization(CU)									
0.0	1.19	1.19	1.19	1.16	1.16	1.16	1.11	1.11	1.11	1.06	1.06	1.06	1.02	1.02	1.02	1.00
1.0	1.11	1.09	1.06	1.09	1.07	1.05	1.05	1.03	1.01	1.01	.98	.98	.98	.97	.96	.94
2.0	1.04	1.00	.97	1.02	.99	.96	.99	.96	.94	.96	.94	.92	.93	.91	.90	.88
3.0	.98	.93	.89	.96	.92	.89	.94	.90	.87	.91	.88	.86	.89	.87	.85	.83
4.0	.92	.87	.83	.91	.87	.83	.89	.85	.82	.87	.84	.81	.85	.82	.80	.79
5.0	.88	.82	.78	.87	.82	.78	.85	.81	.77	.83	.80	.77	.82	.79	.76	.75
6.0	.83	.78	.74	.83	.77	.74	.81	.77	.73	.80	.76	.73	.78	.75	.72	.71
7.0	.79	.74	.70	.79	.74	.70	.78	.73	.70	.76	.72	.69	.75	.72	.69	.68
8.0	.76	.71	.67	.75	.70	.67	.74	.70	.67	.73	.69	.66	.72	.69	.66	.65
9.0	.73	.67	.64	.72	.67	.64	.71	.67	.64	.70	.66	.63	.70	.66	.63	.62
10.0	.70	.65	.61	.69	.64	.61	.69	.64	.61	.68	.64	.61	.67	.63	.61	.59



C Range: 0 - 360DEG
 C Interval: 15.0DEG
 Test Speed: HIGH
 Temperature:25.3°C
 Operators:DAMIN
 Test Date:2023-12-15

γ Range: 0 - 90DEG
 γ Interval: 1.0DEG
 Test System:EVERFINE GO-2000B_V1 SYSTEM V2.00.473
 Humidity:65.0%
 Test Distance:9.401m [K=1.0000]
 Remarks:

WEC AND CCEC

Test:U:220.41V I:0.0675A P:7.2475W PF:0.4871 Freq:50.00Hz								
Lamp Flux:595.367x1 lm								
NAME:			TYPE: 射灯			WEIGHT:		
SPEC.:			DIM.:			SERIAL No.:		
MFR.: EVERFINE			SUR.: 45mm			Shielding Angle:		

ρ_{CC}	80%			70%			50%			30%			10%			0
ρ_w	50%	30%	10%	50%	30%	10%	50%	30%	10%	50%	30%	10%	50%	30%	10%	0
ρ_{fc}	20%			20%			20%			20%			20%			0
RCR	RCR:Room Cavity Ratio						Wall Exitance Coefficients (WEC)									
0.0																
1.0	.174	.099	.031	.167	.096	.030	.155	.089	.028	.143	.083	.027	.133	.077	.025	
2.0	.163	.089	.027	.157	.087	.027	.147	.082	.025	.137	.077	.024	.128	.072	.023	
3.0	.152	.081	.024	.148	.079	.024	.139	.075	.023	.130	.071	.022	.123	.068	.021	
4.0	.143	.074	.022	.139	.073	.021	.131	.070	.021	.124	.067	.020	.117	.064	.019	
5.0	.135	.069	.020	.131	.067	.020	.124	.065	.019	.118	.062	.019	.113	.060	.018	
6.0	.127	.064	.018	.124	.063	.018	.118	.061	.018	.113	.059	.017	.108	.057	.017	
7.0	.121	.060	.017	.118	.059	.017	.113	.057	.016	.108	.056	.016	.104	.054	.016	
8.0	.115	.056	.016	.113	.055	.016	.108	.054	.015	.104	.053	.015	.100	.051	.015	
9.0	.110	.053	.015	.108	.052	.015	.104	.051	.015	.100	.050	.014	.096	.049	.014	
10.0	.105	.050	.014	.103	.050	.014	.100	.049	.014	.096	.048	.014	.093	.047	.013	

ρ_{CC}	80%			70%			50%			30%			10%			0
ρ_w	50%	30%	10%	50%	30%	10%	50%	30%	10%	50%	30%	10%	50%	30%	10%	0
ρ_{fc}	20%			20%			20%			20%			20%			0
RCR	RCR:Room Cavity Ratio						Ceiling Cavity Exitance Coefficients (CCEC)									
0.0	.190	.190	.190	.163	.163	.163	.111	.111	.111	.064	.064	.064	.020	.020	.020	
1.0	.171	.157	.145	.146	.135	.125	.100	.093	.086	.058	.054	.050	.018	.017	.016	
2.0	.155	.133	.114	.133	.114	.098	.091	.079	.069	.052	.046	.040	.017	.015	.013	
3.0	.142	.114	.091	.122	.098	.079	.083	.068	.055	.048	.040	.033	.015	.013	.011	
4.0	.131	.099	.074	.112	.085	.064	.077	.059	.045	.045	.035	.027	.014	.011	.009	
5.0	.121	.087	.061	.104	.075	.053	.072	.052	.038	.042	.031	.022	.013	.010	.007	
6.0	.113	.077	.052	.097	.067	.045	.067	.047	.032	.039	.028	.019	.013	.009	.006	
7.0	.106	.069	.044	.091	.060	.038	.063	.042	.027	.037	.025	.016	.012	.008	.005	
8.0	.100	.063	.038	.086	.055	.033	.059	.038	.023	.035	.023	.014	.011	.007	.005	
9.0	.094	.058	.033	.081	.050	.029	.056	.035	.020	.033	.021	.012	.011	.007	.004	
10.0	.090	.053	.029	.077	.046	.025	.054	.032	.018	.031	.019	.011	.010	.006	.004	

C Range: 0 - 360DEG
 C Interval: 15.0DEG
 Test Speed: HIGH
 Temperature:25.3°C
 Operators:DAMIN
 Test Date:2023-12-15

γ Range: 0 - 90DEG
 γ Interval: 1.0DEG
 Test System:EVERFINE GO-2000B_V1 SYSTEM V2.00.473
 Humidity:65.0%
 Test Distance:9.401m [K=1.0000]
 Remarks:

UGR(Unified Glare Rating) Table

Test:U:220.41V I:0.0675A P:7.2475W PF:0.4871 Freq:50.00Hz										
Lamp Flux:595.367x1 lm										
NAME:		TYPE: 射灯				WEIGHT:				
SPEC.:		DIM.:				SERIAL No.:				
MFR.: EVERFINE		SUR.: 45mm				Shielding Angle:				
ceiling/cavity	0.7	0.7	0.5	0.5	0.3	0.7	0.7	0.5	0.5	0.3
walls	0.5	0.3	0.5	0.3	0.3	0.5	0.3	0.5	0.3	0.3
working plane	0.2	0.2	0.2	0.2	0.2	0.2	0.2	0.2	0.2	0.2
Room dimensions	Viewed crosswise					Viewed endwise				
x = 2H y = 2H	18.9	19.8	19.1	19.9	20.1	18.7	19.6	18.9	19.7	19.9
3H	20.2	21.0	20.5	21.2	21.4	20.1	20.9	20.3	21.1	21.3
4H	21.1	21.8	21.3	22.0	22.3	20.9	21.7	21.2	21.9	22.1
6H	22.1	22.8	22.4	23.1	23.3	21.7	22.4	22.0	22.6	22.9
8H	22.7	23.4	23.0	23.6	23.9	21.7	22.4	22.0	22.6	22.9
12H	23.0	23.7	23.4	24.0	24.2	21.6	22.3	22.0	22.6	22.8
4H 2H	19.3	20.1	19.6	20.3	20.5	19.2	19.9	19.4	20.1	20.4
3H	20.9	21.6	21.3	21.9	22.1	20.8	21.5	21.2	21.8	22.0
4H	22.0	22.6	22.4	22.9	23.2	21.9	22.5	22.2	22.8	23.1
6H	23.3	23.8	23.7	24.2	24.5	22.8	23.4	23.2	23.7	24.0
8H	24.0	24.5	24.4	24.8	25.2	22.8	23.3	23.2	23.7	24.1
12H	24.4	24.8	24.8	25.2	25.6	22.8	23.2	23.2	23.6	24.0
8H 4H	22.5	23.0	22.8	23.3	23.7	22.4	22.9	22.8	23.2	23.6
6H	24.0	24.4	24.4	24.8	25.2	23.4	23.8	23.8	24.2	24.6
8H	24.8	25.1	25.2	25.5	26.0	23.4	23.8	23.9	24.2	24.7
12H	25.2	25.5	25.6	25.9	26.4	23.4	23.7	23.9	24.1	24.6
12H 4H	22.5	23.0	22.9	23.3	23.7	22.4	22.9	22.9	23.3	23.7
6H	24.0	24.4	24.5	24.8	25.3	23.5	23.9	24.0	24.3	24.8
8H	24.8	25.1	25.3	25.6	26.1	23.6	23.9	24.0	24.3	24.8
Variations with the observer position at spacings(CIE Pub.117):										
S = 1.0H	+ 0.1 / - 0.1					+ 0.1 / - 0.2				
1.5H	+ 0.2 / - 0.1					+ 0.1 / - 0.2				
2.0H	+ 0.2 / - 0.3					+ 0.1 / - 0.3				

CIE Pub.117, 595.4 lm Total Lamp Luminous Flux Correct (8log(F/F0) = -1.8)
 Area: 0.0016 m2

C Range: 0 - 360DEG
 C Interval: 15.0DEG
 Test Speed: HIGH
 Temperature:25.3°C
 Operators:DAMIN
 Test Date:2023-12-15

γ Range: 0 - 90DEG
 γ Interval: 1.0DEG
 Test System:EVERFINE GO-2000B_V1 SYSTEM V2.00.473
 Humidity:65.0%
 Test Distance:9.401m [K=1.0000]
 Remarks:

UTILIZATION FACTORS TABLE

Test:U:220.41V I:0.0675A P:7.2475W PF:0.4871 Freq:50.00Hz Lamp Flux:595.367x1 lm		
NAME:	TYPE: 射灯	WEIGHT:
SPEC.:	DIM.:	SERIAL No.:
MFR.: EVERFINE	SUR.: 45mm	Shielding Angle:

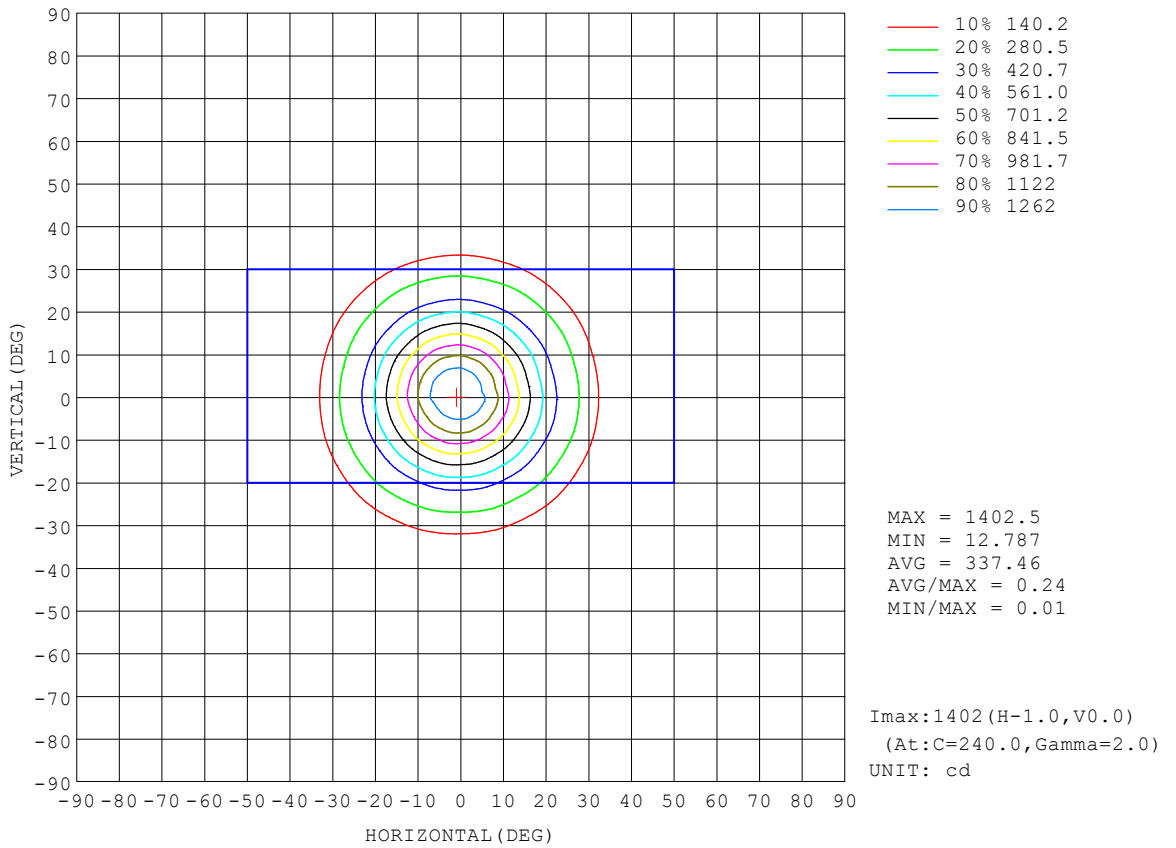
REFLECTANCE										
Ceiling	0.8	0.8	0.8	0.7	0.7	0.7	0.5	0.5	0.5	0
Walls	0.7	0.5	0.3	0.7	0.5	0.3	0.7	0.5	0.3	0
Working plane	0.2	0.2	0.2	0.2	0.2	0.2	0.2	0.2	0.2	0
ROOM INDEX	UTILIZATION FACTORS (PERCENT) $k(RI) \times RCR = 5$									
k = 0.60	87	81	77	86	80	77	86	80	77	73
0.80	94	88	84	94	88	84	92	87	84	80
1.00	98	93	89	98	92	89	96	92	88	84
1.25	102	97	93	101	96	93	99	95	92	88
1.50	105	100	97	104	99	96	102	98	95	90
2.00	108	103	100	106	102	99	104	100	98	92
2.50	110	106	102	108	104	102	105	102	100	94
3.00	111	108	105	109	106	104	106	104	101	95
4.00	113	110	108	111	109	107	108	106	104	97
5.00	115	112	110	113	111	109	109	107	106	98
ROOM INDEX	UF(total)									Direct
According to DIN EN 13032-2 2004			Suspended				SHRNOM = 1.25			

C Range: 0 - 360DEG
 C Interval: 15.0DEG
 Test Speed: HIGH
 Temperature:25.3°C
 Operators:DAMIN
 Test Date:2023-12-15

γ Range: 0 - 90DEG
 γ Interval: 1.0DEG
 Test System:EVERFINE GO-2000B_V1 SYSTEM V2.00.473
 Humidity:65.0%
 Test Distance:9.401m [K=1.0000]
 Remarks:

ISOCANDELA DIAGRAM

Test:U:220.41V I:0.0675A P:7.2475W PF:0.4871 Freq:50.00Hz Lamp Flux:595.367x1 lm		
NAME:	TYPE: 射灯	WEIGHT:
SPEC.:	DIM.:	SERIAL No.:
MFR.: EVERFINE	SUR.: 45mm	Shielding Angle:

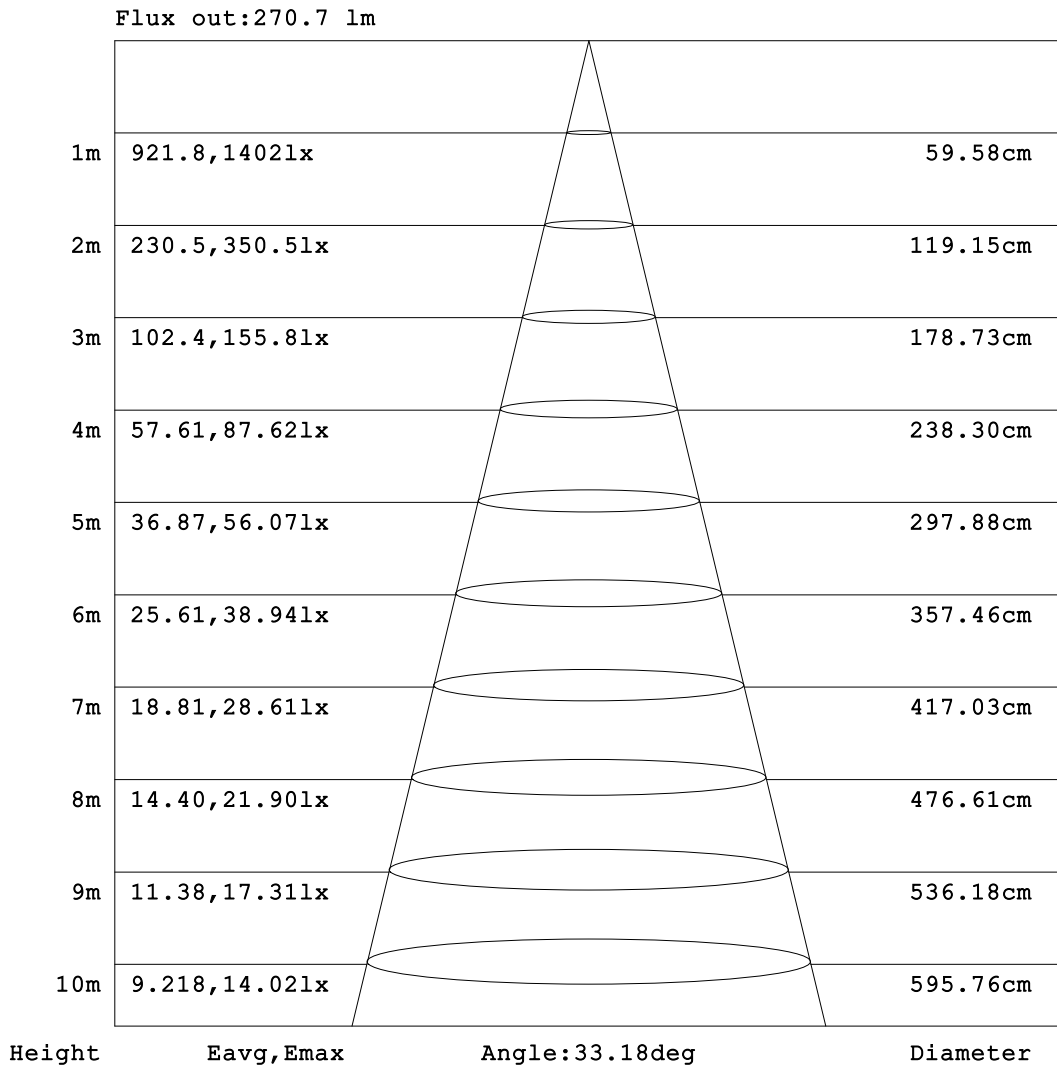


C Range: 0 - 360DEG
 C Interval: 15.0DEG
 Test Speed: HIGH
 Temperature:25.3°C
 Operators:DAMIN
 Test Date:2023-12-15

γ Range: 0 - 90DEG
 γ Interval: 1.0DEG
 Test System:EVERFINE GO-2000B_V1 SYSTEM V2.00.473
 Humidity:65.0%
 Test Distance:9.401m [K=1.0000]
 Remarks:

AAI Figure

Test:U:220.41V I:0.0675A P:7.2475W PF:0.4871 Freq:50.00Hz Lamp Flux:595.367x1 lm		
NAME:	TYPE: 射灯	WEIGHT:
SPEC.:	DIM.:	SERIAL No.:
MFR.: EVERFINE	SUR.: 45mm	Shielding Angle:



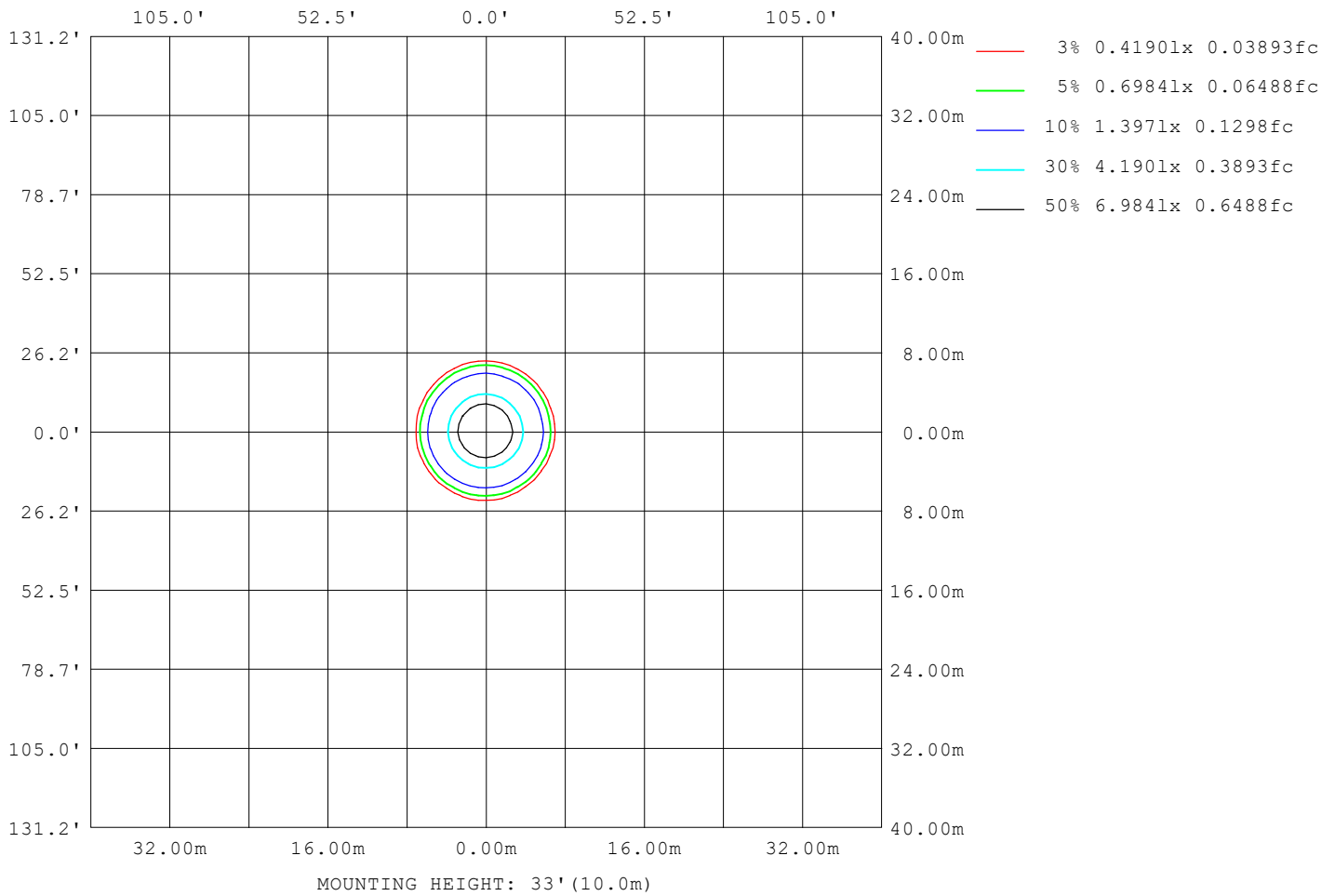
Note:The Curves indicate the illuminated area and the average illumination when the luminaire is at different distance.

C Range: 0 - 360DEG
C Interval: 15.0DEG
Test Speed: HIGH
Temperature:25.3°C
Operators:DAMIN
Test Date:2023-12-15

γ Range: 0 - 90DEG
γ Interval: 1.0DEG
Test System:EVERFINE GO-2000B_V1 SYSTEM V2.00.473
Humidity:65.0%
Test Distance:9.401m [K=1.0000]
Remarks:

ISOLUX DIAGRAM

Test:U:220.41V I:0.0675A P:7.2475W PF:0.4871 Freq:50.00Hz Lamp Flux:595.367x1 lm		
NAME:	TYPE: 射灯	WEIGHT:
SPEC.:	DIM.:	SERIAL No.:
MFR.: EVERFINE	SUR.: 45mm	Shielding Angle:



C Range: 0 - 360DEG
 C Interval: 15.0DEG
 Test Speed: HIGH
 Temperature:25.3°C
 Operators:DAMIN
 Test Date:2023-12-15

γ Range: 0 - 90DEG
 γ Interval: 1.0DEG
 Test System:EVERFINE GO-2000B_V1 SYSTEM V2.00.473
 Humidity:65.0%
 Test Distance:9.401m [K=1.0000]
 Remarks:

LED Avg.L Report

Test:U:220.41V I:0.0675A P:7.2475W PF:0.4871 Freq:50.00Hz Lamp Flux:595.367x1 lm		
NAME:	TYPE: 射灯	WEIGHT:
SPEC.:	DIM.:	SERIAL No.:
MFR.: EVERFINE	SUR.: 45mm	Shielding Angle:

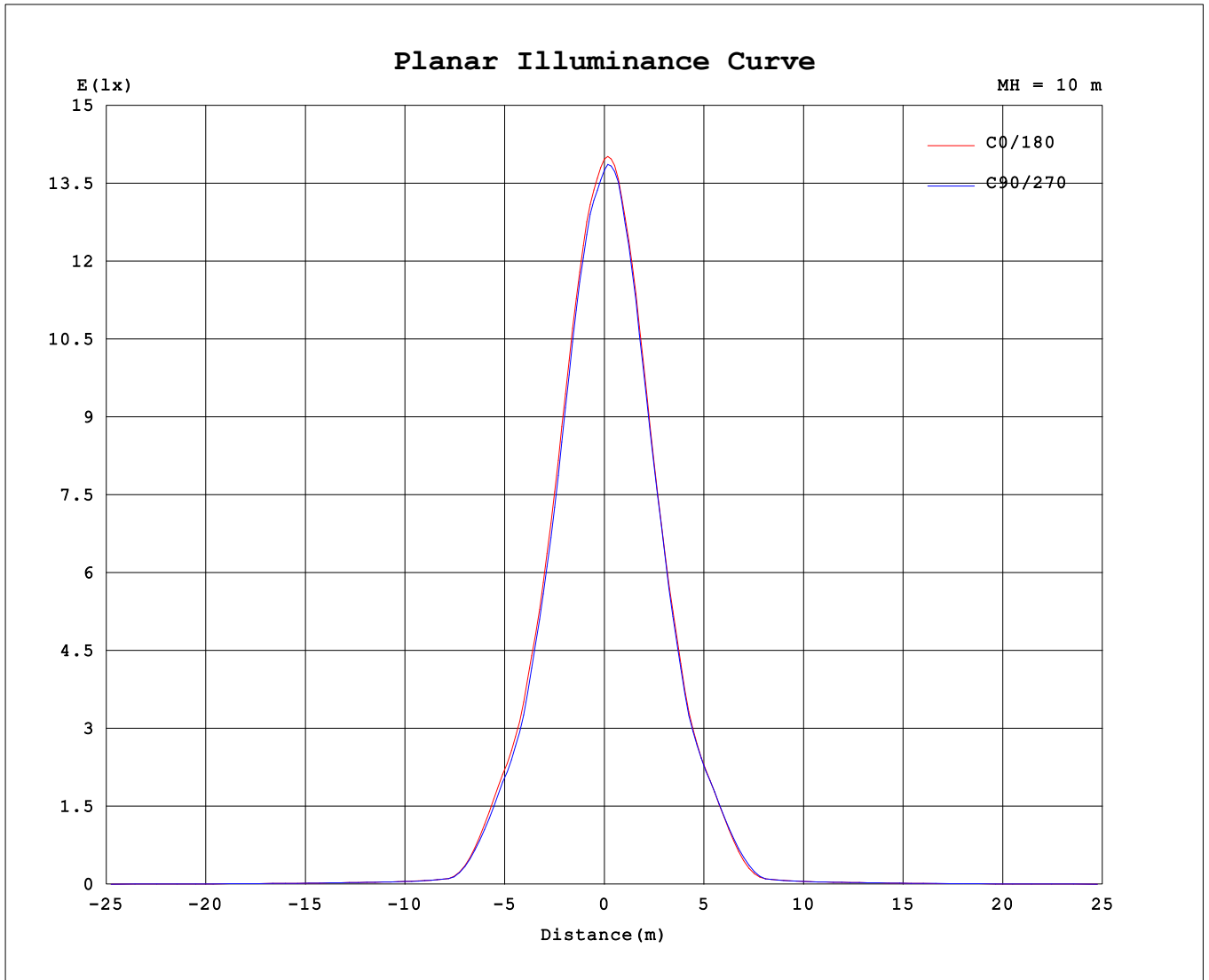
AvgL	cd/m2
L_0~180 (65) av	15254
L_0~180 (75) av	17984
L_0~180 (85) av	26031
L_90~270 (65) av	15487
L_90~270 (75) av	18219
L_90~270 (85) av	409
L_45 (65) av	15355
L_45 (75) av	18201
L_45 (85) av	3616

Standard: GB/T 29293-2012

C Range: 0 - 360DEG
 C Interval: 15.0DEG
 Test Speed: HIGH
 Temperature:25.3℃
 Operators:DAMIN
 Test Date:2023-12-15

γ Range: 0 - 90DEG
 γ Interval: 1.0DEG
 Test System:EVERFINE GO-2000B_V1 SYSTEM V2.00.473
 Humidity:65.0%
 Test Distance:9.401m [K=1.0000]
 Remarks:

Planar Illuminance Curve



C Range: 0 - 360DEG
 C Interval: 15.0DEG
 Test Speed: HIGH
 Temperature: 25.3°C
 Operators: DAMIN
 Test Date: 2023-12-15

γ Range: 0 - 90DEG
 γ Interval: 1.0DEG
 Test System: EVERFINE GO-2000B_V1 SYSTEM V2.00.473
 Humidity: 65.0%
 Test Distance: 9.401m [K=1.0000]
 Remarks:

