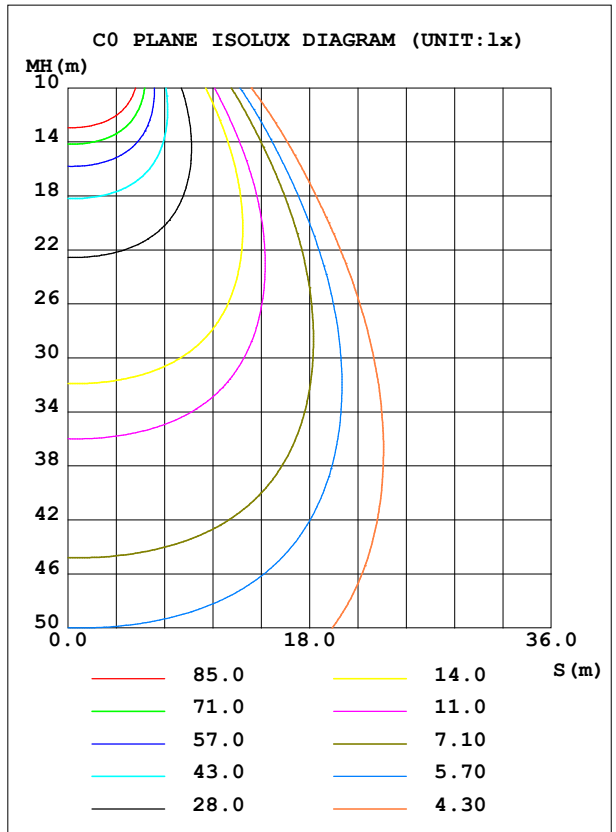
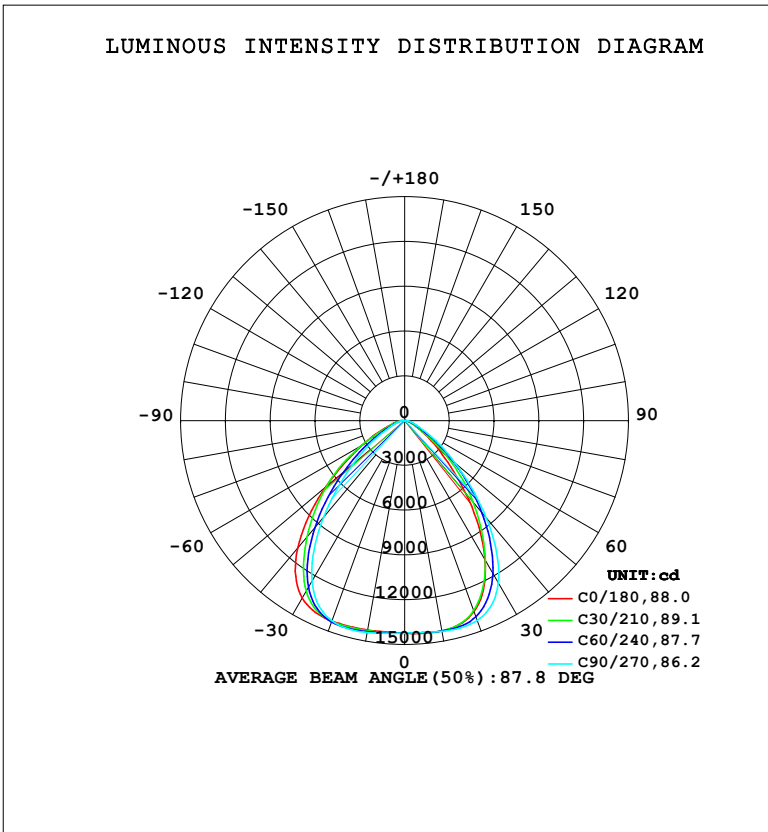


LUMINAIRE PHOTOMETRIC TEST REPORT

Test:U:230.25V I:0.8507A P:193.63W PF:0.9886 Freq:50.00Hz Lamp Flux:27919.7x1 lm		
NAME:	TYPE:	WEIGHT:
SPEC.: 6000K	DIM.:	SERIAL No.:
MFR.: EVERFINE	SUR.:	Shielding Angle:

DATA OF LAMP		PHOTOMETRIC DATA			
MODEL	709	Imax (cd)	14464	S/MH (C0/180)	1.37
NOMINAL POWER (W)	200	LOR (%)	100.0	S/MH (C90/270)	1.22
RATED VOLTAGE (V)	230	TOTAL FLUX (lm)	27920	η UP, DN (C0-180)	0.0,47.4
NOMINAL FLUX (lm)	27919.7	CIE CLASS	DIRECT	η UP, DN (C180-360)	0.0,52.6
LAMPS INSIDE	1	η up (%)	0.0	CIBSE SHR NOM	1.25
TEST VOLTAGE (V)	230	η down (%)	100.0	CIBSE SHR MAX	1.25



C Range: 0 - 360DEG
 C Interval: 15.0DEG
 Test Speed: HIGH
 Temperature: 25.3°C
 Operators: DAMIN
 Test Date: 2024-11-26

γ Range: 0 - 90DEG
 γ Interval: 1.0DEG
 Test System: EVERFINE GO-2000B_V1 SYSTEM V2.00.473
 Humidity: 65.0%
 Test Distance: 9.401m [K=1.0000]
 Remarks:

ZONAL FLUX DIAGRAM

ZONAL FLUX DIAGRAM:

γ	C0	C45	C90	C135	C180	C225	C270	C315	γ	Φ zone	Φ total	%lum, lamp
10	1430	1430	1433	1432	1424	1431	1441	1439	0- 10	1364	1364	4.89,4.89
20	1361	1373	1423	1406	1428	1431	1427	1396	10- 20	4048	5412	19.4,19.4
30	1078	1119	1255	1178	1372	1294	1241	1130	20- 30	6107	11519	41.3,41.3
40	639.5	762.2	853.4	832.5	1115	974.7	846.2	800.1	30- 40	6449	17968	64.4,64.4
50	291.9	415.9	441.1	518.3	690.0	620.4	448.6	485.6	40- 50	5060	23028	82.5,82.5
60	113.1	136.7	187.4	190.6	328.4	275.4	193.2	168.3	50- 60	2910	25938	92.9,92.9
70	50.31	57.58	75.27	76.20	127.6	97.47	78.14	72.80	60- 70	1240	27178	97.3,97.3
80	13.68	20.75	33.79	33.57	56.30	41.33	34.33	29.53	70- 80	564.0	27742	99.4,99.4
90	0.9654	0.8290	0.6526	0.6419	18.25	8.101	0.7708	0.7871	80- 90	177.4	27920	100,100
100									90-100			
110									100-110			
120									110-120			
130									120-130			
140									130-140			
150									140-150			
160									150-160			
170									160-170			
180									170-180			
DEG	LUMINOUS INTENSITY:X10cd									UNIT:lm		

Conical surface Flux(90deg): 20742 lm

%lum = 74.3%

%lamp = 74.3%

Conical surface Flux(130deg): 26688 lm

%lum = 95.6%

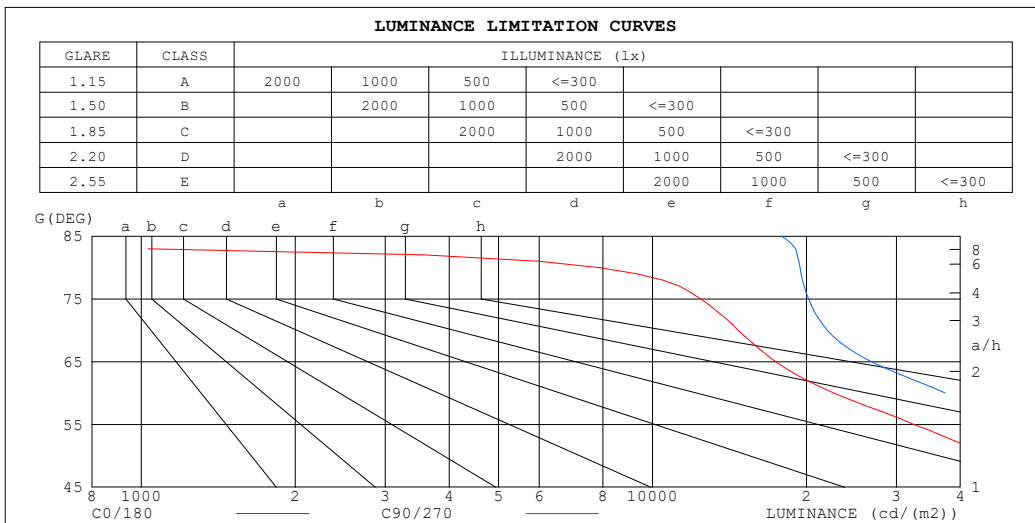
%lamp = 95.6%

C Range: 0 - 360DEG
 C Interval: 15.0DEG
 Test Speed: HIGH
 Temperature:25.3°C
 Operators:DAMIN
 Test Date:2024-11-26

γ Range: 0 - 90DEG
 γ Interval: 1.0DEG
 Test System:EVERFINE GO-2000B_V1 SYSTEM V2.00.473
 Humidity:65.0%
 Test Distance:9.401m [K=1.0000]
 Remarks:

LUMINANCE LIMITATION CURVES

Test:U:230.25V I:0.8507A P:193.63W PF:0.9886 Freq:50.00Hz Lamp Flux:27919.7x1 lm		
NAME:	TYPE:	WEIGHT:
SPEC.: 6000K	DIM.:	SERIAL No.:
MFR.: EVERFINE	SUR.:	Shielding Angle:



LUMINANCE cd/(m2)		
G (DEG)	C0/180	C90/270
85	797	17900
80	7883	19426
75	12436	20200
70	14716	21971
65	17415	26816
60	22632	37411
55	32479	51934
50	45427	68513
45	61799	88843

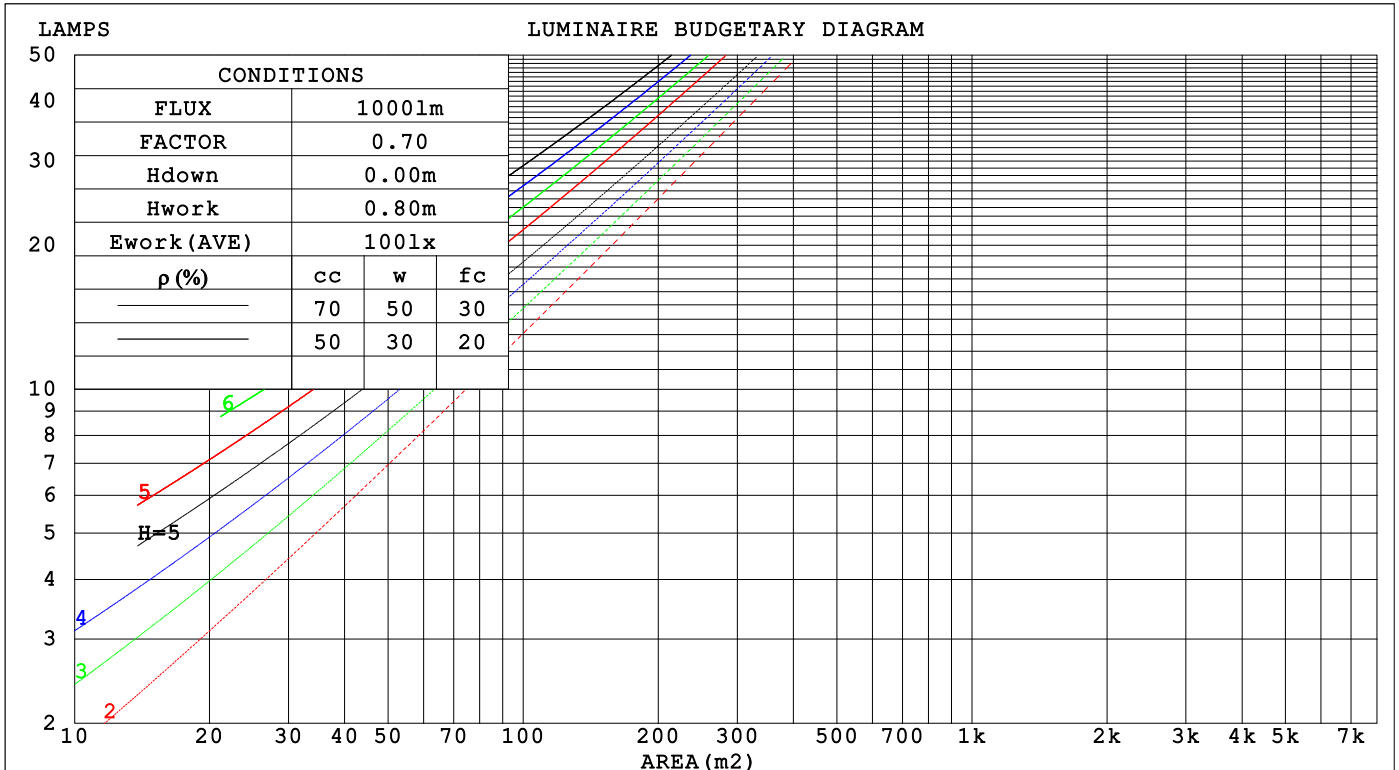
C Range: 0 - 360DEG
 C Interval: 15.0DEG
 Test Speed: HIGH
 Temperature:25.3°C
 Operators:DAMIN
 Test Date:2024-11-26

γ Range: 0 - 90DEG
 γ Interval: 1.0DEG
 Test System:EVERFINE GO-2000B_V1 SYSTEM V2.00.473
 Humidity:65.0%
 Test Distance:9.401m [K=1.0000]
 Remarks:

CU AND LUMINAIRE BUDGETARY ESTIMATE DIAGRAM

Test:U:230.25V I:0.8507A P:193.63W PF:0.9886 Freq:50.00Hz Lamp Flux:27919.7x1 lm		
NAME:	TYPE:	WEIGHT:
SPEC.: 6000K	DIM.:	SERIAL No.:
MFR.: EVERFINE	SUR.:	Shielding Angle:

ρcc	80%			70%			50%			30%			10%			0
ρw	50%	30%	10%	50%	30%	10%	50%	30%	10%	50%	30%	10%	50%	30%	10%	0
ρfc	20%			20%			20%			20%			20%			0
RCR	RCR:Room Cavity Ratio Coefficients of Utilization(CU)															
0.0	1.19	1.19	1.19	1.16	1.16	1.16	1.11	1.11	1.11	1.06	1.06	1.06	1.02	1.02	1.02	1.00
1.0	1.08	1.04	1.01	1.05	1.02	.00	1.01	.99	.97	.97	.95	.94	.94	.92	.91	.89
2.0	.97	.91	.87	.95	.90	.86	.92	.87	.84	.88	.85	.82	.86	.83	.80	.78
3.0	.87	.81	.75	.86	.80	.75	.83	.78	.73	.80	.76	.72	.78	.74	.71	.69
4.0	.79	.72	.66	.78	.71	.66	.76	.70	.65	.73	.68	.64	.71	.67	.63	.61
5.0	.72	.64	.59	.71	.64	.58	.69	.63	.58	.67	.62	.57	.65	.61	.57	.55
6.0	.66	.58	.52	.65	.58	.52	.63	.57	.52	.62	.56	.51	.60	.55	.51	.49
7.0	.60	.53	.47	.60	.52	.47	.58	.52	.47	.57	.51	.46	.56	.50	.46	.44
8.0	.56	.48	.43	.55	.48	.43	.54	.47	.42	.53	.47	.42	.51	.46	.42	.40
9.0	.51	.44	.39	.51	.44	.39	.50	.43	.39	.49	.43	.39	.48	.42	.38	.37
10.0	.48	.41	.36	.47	.40	.36	.46	.40	.36	.45	.40	.35	.45	.39	.35	.34



C Range: 0 - 360DEG
 C Interval: 15.0DEG
 Test Speed: HIGH
 Temperature:25.3°C
 Operators:DAMIN
 Test Date:2024-11-26

γ Range: 0 - 90DEG
 γ Interval: 1.0DEG
 Test System:EVERFINE GO-2000B_V1 SYSTEM V2.00.473
 Humidity:65.0%
 Test Distance:9.401m [K=1.0000]
 Remarks:

WEC AND CCEC

Test:U:230.25V I:0.8507A P:193.63W PF:0.9886 Freq:50.00Hz		
Lamp Flux:27919.7x1 lm		
NAME:	TYPE:	WEIGHT:
SPEC.: 6000K	DIM.:	SERIAL No.:
MFR.: EVERFINE	SUR.:	Shielding Angle:

ρ_{CC}	80%			70%			50%			30%			10%			0
ρ_w	50%	30%	10%	50%	30%	10%	50%	30%	10%	50%	30%	10%	50%	30%	10%	0
ρ_{fc}	20%			20%			20%			20%			20%			0
RCR	RCR:Room Cavity Ratio						Wall Exitance Coefficients (WEC)									
0.0																
1.0	.239	.136	.043	.232	.132	.042	.219	.126	.040	.207	.120	.038	.197	.114	.037	
2.0	.231	.126	.039	.225	.124	.038	.214	.119	.037	.203	.114	.036	.194	.110	.035	
3.0	.219	.116	.035	.214	.114	.034	.204	.111	.034	.195	.107	.033	.187	.103	.032	
4.0	.207	.107	.032	.202	.106	.031	.193	.103	.031	.186	.100	.030	.178	.097	.029	
5.0	.195	.099	.029	.191	.098	.029	.183	.095	.028	.176	.093	.028	.170	.091	.027	
6.0	.184	.092	.026	.180	.091	.026	.173	.089	.026	.167	.087	.026	.161	.085	.025	
7.0	.174	.086	.024	.170	.085	.024	.164	.083	.024	.159	.081	.024	.153	.080	.023	
8.0	.164	.080	.023	.161	.079	.022	.156	.078	.022	.151	.076	.022	.146	.075	.022	
9.0	.156	.075	.021	.153	.075	.021	.148	.073	.021	.144	.072	.021	.139	.071	.020	
10.0	.148	.071	.020	.145	.070	.020	.141	.069	.019	.137	.068	.019	.133	.067	.019	

ρ_{CC}	80%			70%			50%			30%			10%			0
ρ_w	50%	30%	10%	50%	30%	10%	50%	30%	10%	50%	30%	10%	50%	30%	10%	0
ρ_{fc}	20%			20%			20%			20%			20%			0
RCR	RCR:Room Cavity Ratio						Ceiling Cavity Exitance Coefficients (CCEC)									
0.0	.190	.190	.190	.163	.163	.163	.111	.111	.111	.064	.064	.064	.020	.020	.020	
1.0	.175	.157	.140	.150	.135	.120	.103	.093	.083	.059	.054	.048	.019	.017	.016	
2.0	.164	.132	.105	.141	.114	.091	.096	.079	.064	.056	.046	.037	.018	.015	.012	
3.0	.155	.114	.082	.133	.098	.071	.091	.068	.050	.053	.040	.029	.017	.013	.010	
4.0	.146	.100	.065	.126	.086	.056	.086	.060	.040	.050	.035	.023	.016	.011	.008	
5.0	.139	.089	.052	.119	.077	.046	.082	.054	.032	.048	.032	.019	.015	.010	.006	
6.0	.132	.080	.043	.114	.070	.038	.078	.049	.027	.045	.029	.016	.015	.009	.005	
7.0	.126	.073	.037	.108	.064	.032	.075	.045	.023	.043	.026	.013	.014	.009	.004	
8.0	.120	.068	.031	.103	.059	.027	.072	.041	.019	.042	.024	.012	.013	.008	.004	
9.0	.115	.063	.027	.099	.054	.024	.068	.038	.017	.040	.023	.010	.013	.007	.003	
10.0	.110	.058	.024	.095	.051	.021	.066	.036	.015	.038	.021	.009	.012	.007	.003	

C Range: 0 - 360DEG
 C Interval: 15.0DEG
 Test Speed: HIGH
 Temperature:25.3°C
 Operators:DAMIN
 Test Date:2024-11-26

γ Range: 0 - 90DEG
 γ Interval: 1.0DEG
 Test System:EVERFINE GO-2000B_V1 SYSTEM V2.00.473
 Humidity:65.0%
 Test Distance:9.401m [K=1.0000]
 Remarks:

UGR(Unified Glare Rating) Table

Test:U:230.25V I:0.8507A P:193.63W PF:0.9886 Freq:50.00Hz										
Lamp Flux:27919.7x1 lm										
NAME:			TYPE:			WEIGHT:				
SPEC.: 6000K			DIM.:			SERIAL No.:				
MFR.: EVERFINE			SUR.:			Shielding Angle:				
ceiling/cavity	0.7	0.7	0.5	0.5	0.3	0.7	0.7	0.5	0.5	0.3
walls	0.5	0.3	0.5	0.3	0.3	0.5	0.3	0.5	0.3	0.3
working plane	0.2	0.2	0.2	0.2	0.2	0.2	0.2	0.2	0.2	0.2
Room dimensions	Viewed crosswise					Viewed endwise				
x = 2H y = 2H	12.3	13.5	12.5	13.7	13.9	13.9	15.1	14.1	15.3	15.5
3H	12.4	13.5	12.7	13.8	14.0	14.1	15.3	14.4	15.5	15.7
4H	12.4	13.5	12.7	13.8	14.0	14.2	15.3	14.5	15.5	15.8
6H	12.4	13.4	12.7	13.7	14.0	14.3	15.3	14.6	15.6	15.8
8H	12.4	13.4	12.7	13.6	13.9	14.3	15.3	14.6	15.6	15.8
12H	12.3	13.3	12.6	13.5	13.8	14.3	15.3	14.7	15.6	15.8
4H 2H	12.3	13.4	12.6	13.7	13.9	13.8	14.9	14.1	15.1	15.4
3H	12.5	13.5	12.9	13.8	14.1	14.1	15.1	14.4	15.3	15.6
4H	12.6	13.5	13.0	13.8	14.1	14.3	15.2	14.6	15.5	15.8
6H	12.7	13.4	13.1	13.8	14.1	14.5	15.2	14.9	15.6	15.9
8H	12.6	13.3	13.0	13.7	14.1	14.6	15.3	15.0	15.6	16.0
12H	12.6	13.2	13.0	13.6	14.0	14.6	15.3	15.0	15.6	16.0
8H 4H	12.6	13.3	13.0	13.7	14.1	14.2	14.9	14.6	15.3	15.7
6H	12.7	13.3	13.2	13.7	14.1	14.5	15.1	14.9	15.5	15.9
8H	12.7	13.2	13.1	13.6	14.1	14.6	15.1	15.1	15.6	16.0
12H	12.6	13.1	13.1	13.5	14.0	14.7	15.2	15.2	15.6	16.1
12H 4H	12.6	13.3	13.0	13.6	14.0	14.2	14.8	14.6	15.2	15.6
6H	12.7	13.2	13.2	13.6	14.1	14.5	15.0	14.9	15.4	15.8
8H	12.7	13.1	13.2	13.6	14.0	14.6	15.0	15.1	15.5	16.0
Variations with the observer position at spacings(CIE Pub.117):										
S = 1.0H	+ 1.4 / - 2.2					+ 1.0 / - 1.4				
1.5H	+ 1.2 / - 1.6					+ 1.0 / - 1.1				
2.0H	+ 2.6 / - 2.6					+ 2.4 / - 2.4				

CIE Pub.117, 27920 lm Total Lamp Luminous Flux Correct (8log(F/F0) = 11.6)
 Area: 0.1 m2

C Range: 0 - 360DEG
 C Interval: 15.0DEG
 Test Speed: HIGH
 Temperature:25.3°C
 Operators:DAMIN
 Test Date:2024-11-26

γ Range: 0 - 90DEG
 γ Interval: 1.0DEG
 Test System:EVERFINE GO-2000B_V1 SYSTEM V2.00.473
 Humidity:65.0%
 Test Distance:9.401m [K=1.0000]
 Remarks:

UTILIZATION FACTORS TABLE

Test:U:230.25V I:0.8507A P:193.63W PF:0.9886 Freq:50.00Hz Lamp Flux:27919.7x1 lm		
NAME:	TYPE:	WEIGHT:
SPEC.: 6000K	DIM.:	SERIAL No.:
MFR.: EVERFINE	SUR.:	Shielding Angle:

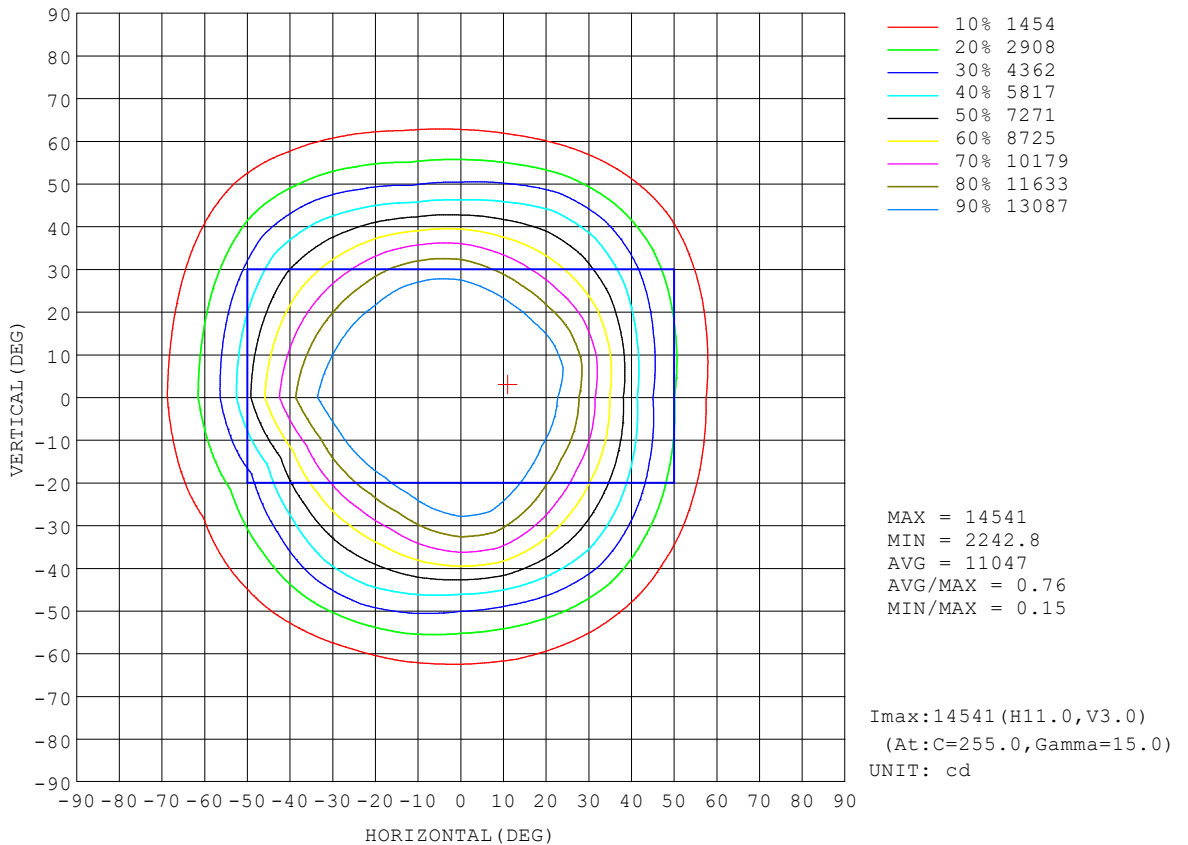
REFLECTANCE										
Ceiling	0.8	0.8	0.8	0.7	0.7	0.7	0.5	0.5	0.5	0
Walls	0.7	0.5	0.3	0.7	0.5	0.3	0.7	0.5	0.3	0
Working plane	0.2	0.2	0.2	0.2	0.2	0.2	0.2	0.2	0.2	0
ROOM INDEX	UTILIZATION FACTORS (PERCENT) $k(RI) \times RCR = 5$									
k = 0.60	69	59	54	68	59	53	67	59	53	48
0.80	79	69	64	78	69	63	76	68	63	57
1.00	86	78	72	85	77	72	83	78	71	66
1.25	93	85	79	91	84	79	89	83	78	72
1.50	97	89	84	95	88	84	93	87	83	76
2.00	102	96	91	100	94	90	97	92	89	82
2.50	105	99	94	103	98	93	99	95	92	84
3.00	107	102	98	105	101	97	101	98	95	87
4.00	110	106	102	108	104	101	104	101	98	90
5.00	112	108	105	109	106	103	105	103	100	92
ROOM INDEX	UF(total)									Direct
According to DIN EN 13032-2 2004			Suspended				SHRNOM = 1.25			

C Range: 0 - 360DEG
 C Interval: 15.0DEG
 Test Speed: HIGH
 Temperature:25.3°C
 Operators:DAMIN
 Test Date:2024-11-26

γ Range: 0 - 90DEG
 γ Interval: 1.0DEG
 Test System:EVERFINE GO-2000B_V1 SYSTEM V2.00.473
 Humidity:65.0%
 Test Distance:9.401m [K=1.0000]
 Remarks:

ISOCANDELA DIAGRAM

Test:U:230.25V I:0.8507A P:193.63W PF:0.9886 Freq:50.00Hz Lamp Flux:27919.7x1 lm		
NAME:	TYPE:	WEIGHT:
SPEC.: 6000K	DIM.:	SERIAL No.:
MFR.: EVERFINE	SUR.:	Shielding Angle:

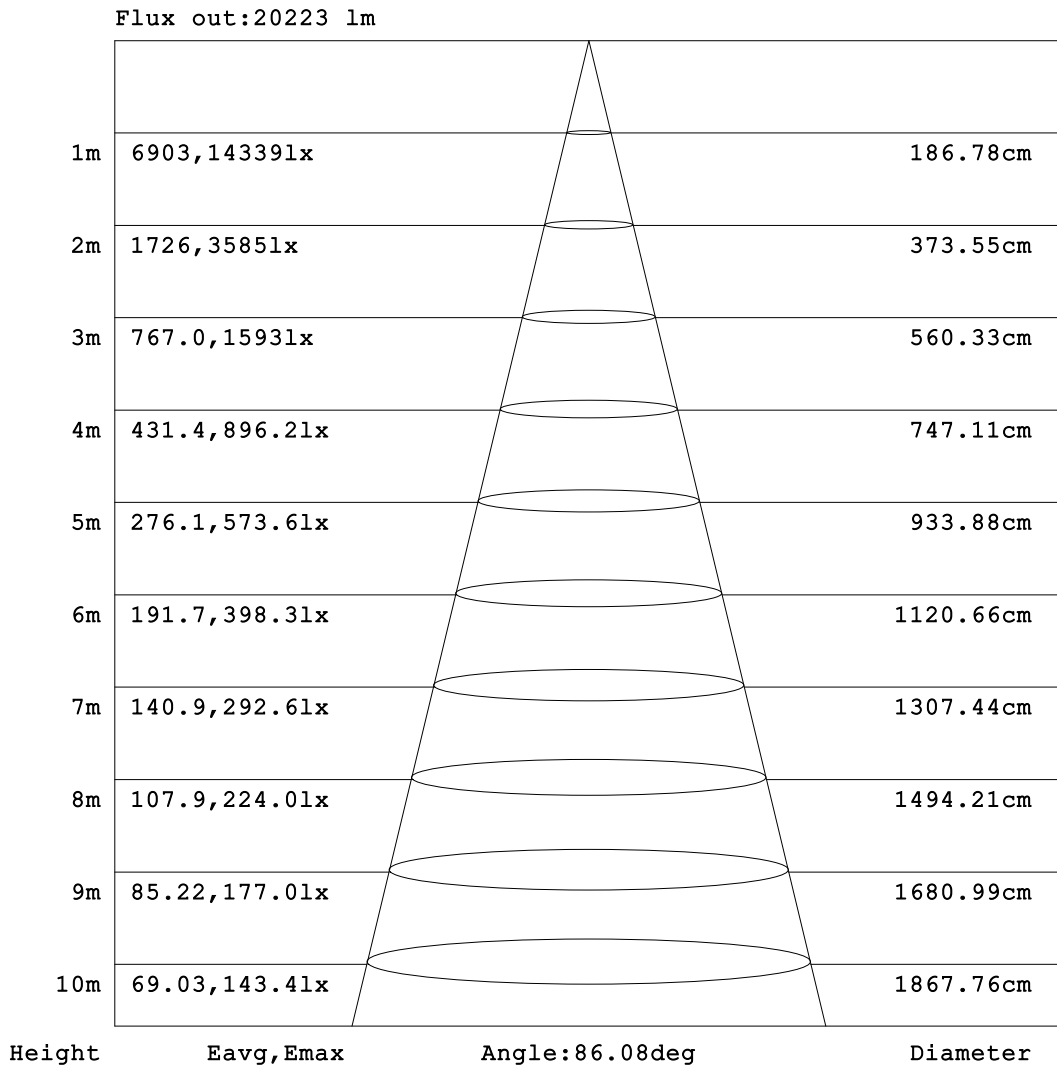


C Range: 0 - 360DEG
C Interval: 15.0DEG
Test Speed: HIGH
Temperature:25.3°C
Operators:DAMIN
Test Date:2024-11-26

γ Range: 0 - 90DEG
γ Interval: 1.0DEG
Test System:EVERFINE GO-2000B_V1 SYSTEM V2.00.473
Humidity:65.0%
Test Distance:9.401m [K=1.0000]
Remarks:

AAI Figure

Test:U:230.25V I:0.8507A P:193.63W PF:0.9886 Freq:50.00Hz Lamp Flux:27919.7x1 lm		
NAME:	TYPE:	WEIGHT:
SPEC.: 6000K	DIM.:	SERIAL No.:
MFR.: EVERFINE	SUR.:	Shielding Angle:



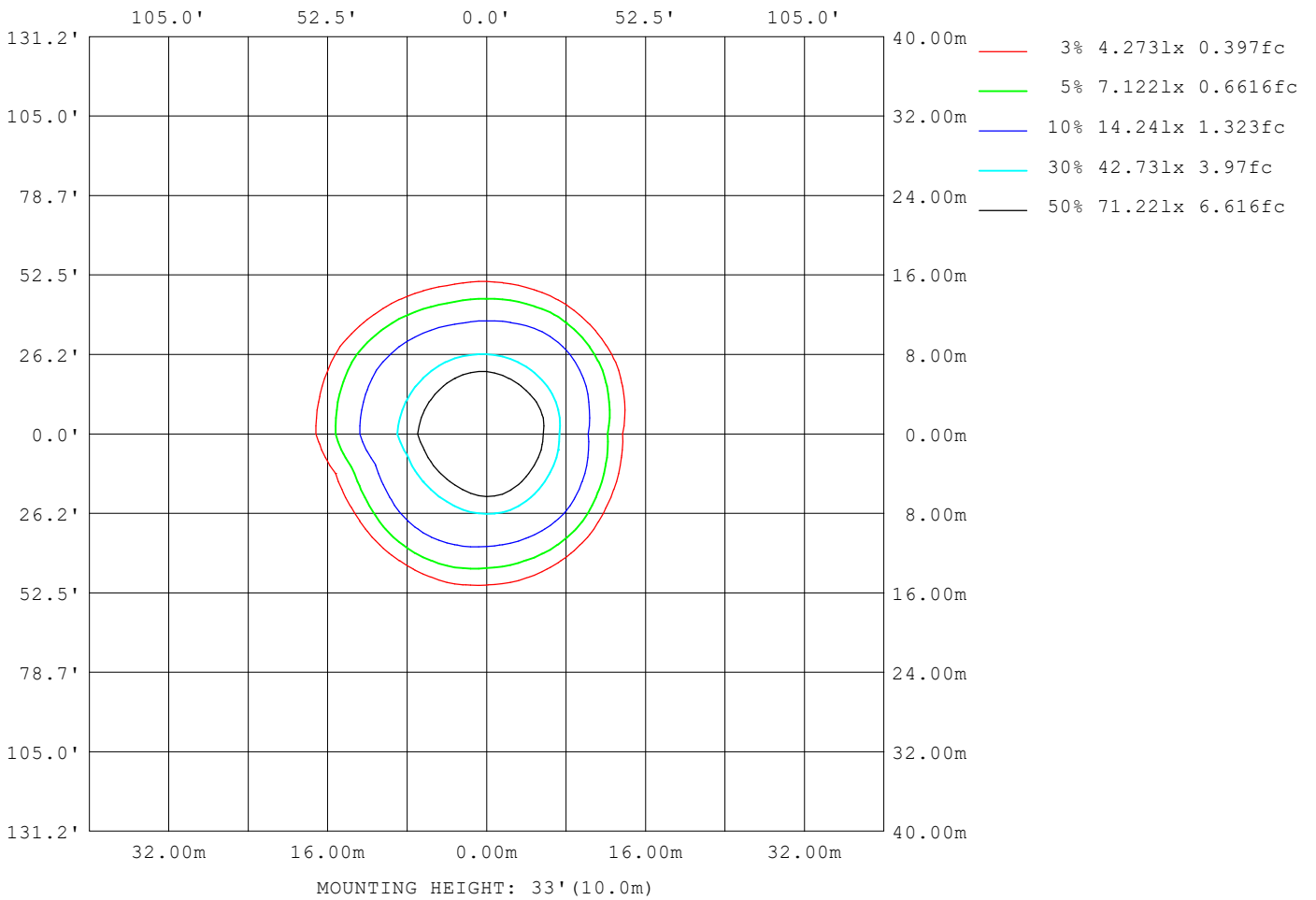
Note:The Curves indicate the illuminated area and the average illumination when the luminaire is at different distance.

C Range: 0 - 360DEG
 C Interval: 15.0DEG
 Test Speed: HIGH
 Temperature:25.3°C
 Operators:DAMIN
 Test Date:2024-11-26

γ Range: 0 - 90DEG
 γ Interval: 1.0DEG
 Test System:EVERFINE GO-2000B_V1 SYSTEM V2.00.473
 Humidity:65.0%
 Test Distance:9.401m [K=1.0000]
 Remarks:

ISOLUX DIAGRAM

Test:U:230.25V I:0.8507A P:193.63W PF:0.9886 Freq:50.00Hz Lamp Flux:27919.7x1 lm		
NAME:	TYPE:	WEIGHT:
SPEC.: 6000K	DIM.:	SERIAL No.:
MFR.: EVERFINE	SUR.:	Shielding Angle:



C Range: 0 - 360DEG
 C Interval: 15.0DEG
 Test Speed: HIGH
 Temperature:25.3°C
 Operators:DAMIN
 Test Date:2024-11-26

γ Range: 0 - 90DEG
 γ Interval: 1.0DEG
 Test System:EVERFINE GO-2000B_V1 SYSTEM V2.00.473
 Humidity:65.0%
 Test Distance:9.401m [K=1.0000]
 Remarks:

LED Avg.L Report

Test:U:230.25V I:0.8507A P:193.63W PF:0.9886 Freq:50.00Hz Lamp Flux:27919.7x1 lm		
NAME:	TYPE:	WEIGHT:
SPEC.: 6000K	DIM.:	SERIAL No.:
MFR.: EVERFINE	SUR.:	Shielding Angle:

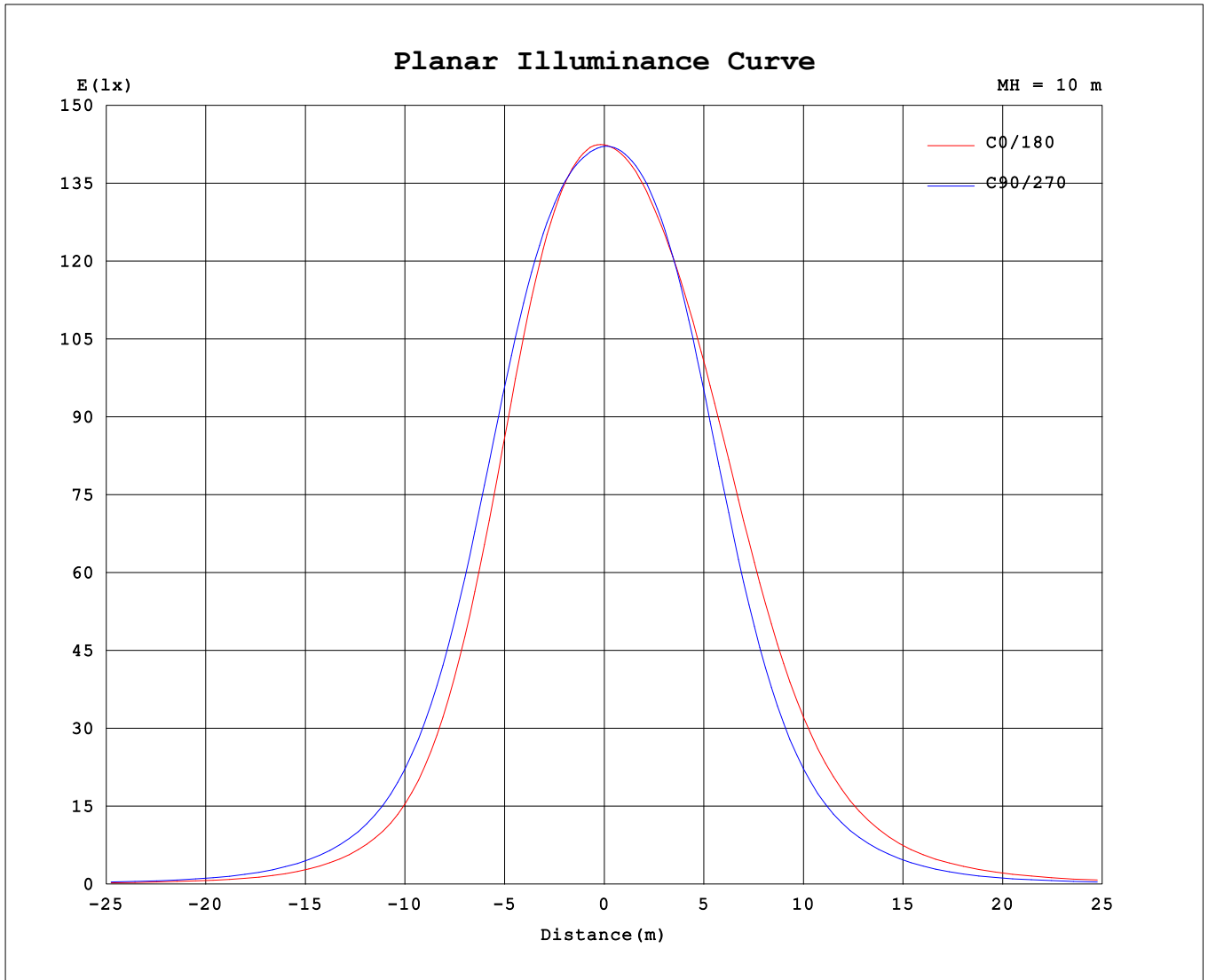
AvgL	cd/m2
L_0~180 (65) av	33805
L_0~180 (75) av	22086
L_0~180 (85) av	21630
L_90~270 (65) av	27201
L_90~270 (75) av	20492
L_90~270 (85) av	18589
L_45 (65) av	27259
L_45 (75) av	19544
L_45 (85) av	15850

Standard: GB/T 29293-2012

C Range: 0 - 360DEG
 C Interval: 15.0DEG
 Test Speed: HIGH
 Temperature:25.3°C
 Operators:DAMIN
 Test Date:2024-11-26

γ Range: 0 - 90DEG
 γ Interval: 1.0DEG
 Test System:EVERFINE GO-2000B_V1 SYSTEM V2.00.473
 Humidity:65.0%
 Test Distance:9.401m [K=1.0000]
 Remarks:

Planar Illuminance Curve



C Range: 0 - 360DEG
 C Interval: 15.0DEG
 Test Speed: HIGH
 Temperature: 25.3°C
 Operators: DAMIN
 Test Date: 2024-11-26

γ Range: 0 - 90DEG
 γ Interval: 1.0DEG
 Test System: EVERFINE GO-2000B_V1 SYSTEM V2.00.473
 Humidity: 65.0%
 Test Distance: 9.401m [K=1.0000]
 Remarks:

