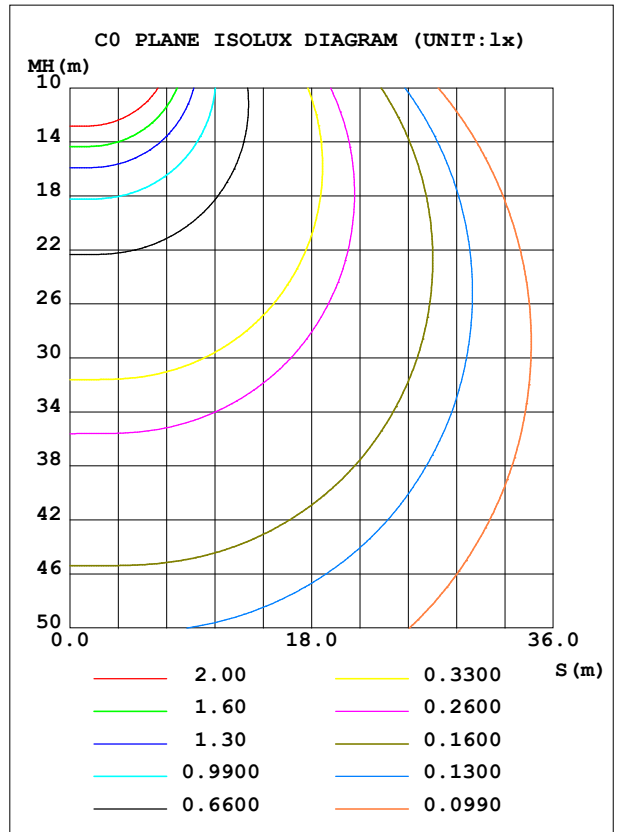
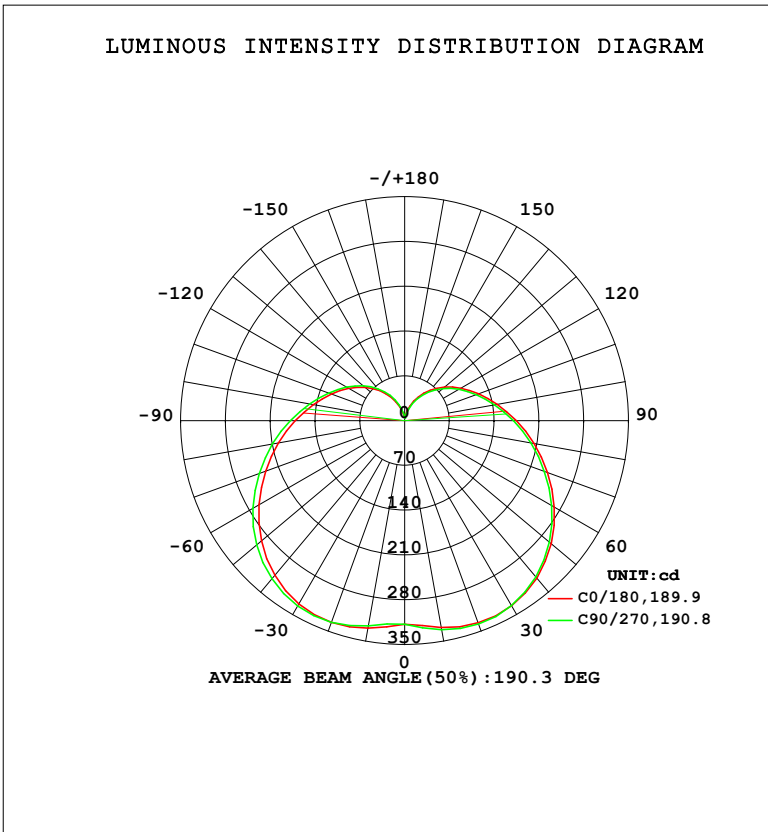


LUMINAIRE PHOTOMETRIC TEST REPORT

Test:U:220.32V I:0.1741A P:19.805W PF:0.5164 Freq:50.00Hz Lamp Flux:2287.95x1 lm		
NAME: 球泡	TYPE:	WEIGHT:
SPEC.:	DIM.:	SERIAL No.:
MFR.: EVERFINE	SUR.: 1	Shielding Angle:

DATA OF LAMP		PHOTOMETRIC DATA				Eff: 115.52 lm/W
MODEL	CF62	I _{max} (cd)	338.8	S/MH (C0/180)	1.55	
NOMINAL POWER (W)	20	LOR (%)	100.0	S/MH (C90/270)	1.57	
RATED VOLTAGE (V)	220	TOTAL FLUX (lm)	2288.0	η UP, DN (C0-180)	13.3, 36.2	
NOMINAL FLUX (lm)	2287.95	CIE CLASS	SEMI-D.	η UP, DN (C180-360)	13.8, 36.7	
LAMPS INSIDE	1	η up (%)	27.1	CIBSE SHR NOM	1.75	
TEST VOLTAGE (V)	219.5	η down (%)	72.9	CIBSE SHR MAX	1.75	



C Range: 0 - 360DEG
 C Interval: 22.5DEG
 Test Speed: HIGH
 Temperature: 25.3°C
 Operators: DAMIN
 Test Date: 2023-11-09

γ Range: 0 - 180DEG
 γ Interval: 5.0DEG
 Test System: EVERFINE GO-2000B_V1 SYSTEM V2.00.473
 Humidity: 65.0%
 Test Distance: 9.401m [K=1.0000]
 Remarks:

ZONAL FLUX DIAGRAM

ZONAL FLUX DIAGRAM:

γ	C0	C45	C90	C135	C180	C225	C270	C315	γ	Φ zone	Φ total	%lum,lamp
10	328.1	330.5	331.7	331.3	329.3	327.2	325.7	326.1	0- 10	30.95	30.95	1.35,1.35
20	336.3	337.7	338.4	337.3	335.4	334.9	335.4	336.2	10- 20	94.57	125.5	5.49,5.49
30	334.2	334.1	333.9	332.1	330.9	332.2	334.4	335.5	20- 30	155.3	280.9	12.3,12.3
40	321.3	320.0	319.1	316.5	315.7	318.6	322.8	324.2	30- 40	205.4	486.3	21.3,21.3
50	299.0	296.9	295.3	292.7	292.4	296.6	302.0	303.6	40- 50	239.2	725.5	31.7,31.7
60	270.2	267.2	265.2	262.5	262.9	267.8	273.8	275.4	50- 60	253.8	979.3	42.8,42.8
70	237.7	234.6	232.5	230.5	231.3	236.1	241.9	243.3	60- 70	250.1	1229	53.7,53.7
80	205.4	202.2	200.3	198.9	200.3	204.6	209.7	210.7	70- 80	232.6	1462	63.9,63.9
90	174.8	171.8	170.0	169.2	171.0	174.7	178.9	179.4	80- 90	205.9	1668	72.9,72.9
100	147.2	144.5	142.9	142.7	144.9	147.9	150.9	151.1	90-100	174.5	1843	80.5,80.5
110	123.2	120.7	119.3	119.7	121.9	124.4	126.5	126.5	100-110	142.3	1985	86.8,86.8
120	101.9	99.55	98.30	98.86	101.3	103.5	105.1	104.9	110-120	111.4	2096	91.6,91.6
130	81.88	79.45	78.04	78.68	81.27	83.43	84.87	84.62	120-130	82.32	2179	95.2,95.2
140	62.25	59.70	58.23	58.72	61.37	63.59	65.06	64.78	130-140	55.64	2234	97.7,97.7
150	43.09	40.47	38.79	39.22	41.82	44.21	45.68	45.32	140-150	32.86	2267	99.1,99.1
160	24.88	22.33	20.65	20.97	23.29	25.65	27.10	26.77	150-160	15.50	2283	99.8,99.8
170	9.589	7.875	6.636	6.858	8.355	10.12	11.15	10.86	160-170	4.738	2287	100,100
180	4.073	4.060	4.068	4.108	4.166	4.138	4.129	4.120	170-180	0.5978	2288	100,100
DEG	LUMINOUS INTENSITY:cd									UNIT:lm		

Conical surface Flux(90deg): 602.86 lm

%lum = 26.3%

%lamp = 26.3%

Conical surface Flux(130deg): 1105.8 lm

%lum = 48.3%

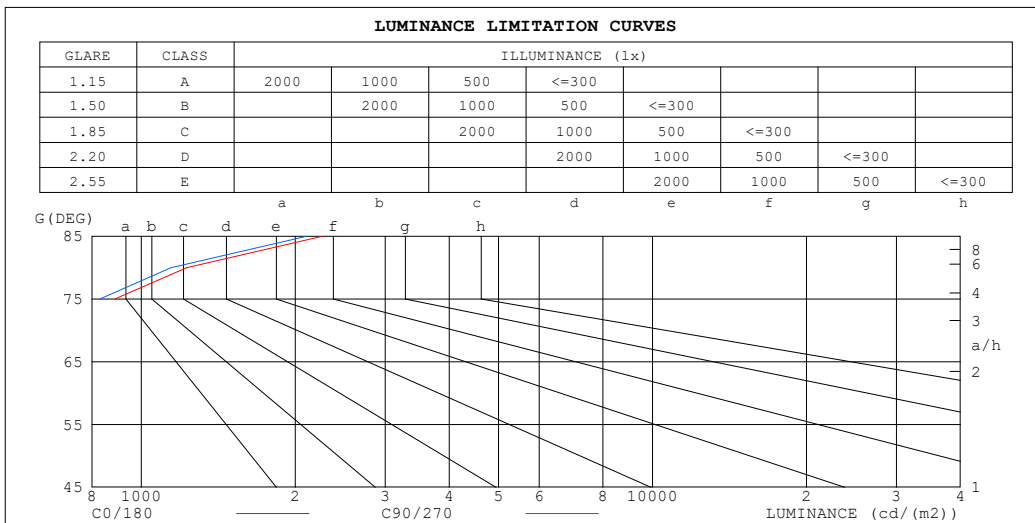
%lamp = 48.3%

C Range: 0 - 360DEG
 C Interval: 22.5DEG
 Test Speed: HIGH
 Temperature:25.3°C
 Operators:DAMIN
 Test Date:2023-11-09

γ Range: 0 - 180DEG
 γ Interval: 5.0DEG
 Test System:EVERFINE GO-2000B_V1 SYSTEM V2.00.473
 Humidity:65.0%
 Test Distance:9.401m [K=1.0000]
 Remarks:

LUMINANCE LIMITATION CURVES

Test:U:220.32V I:0.1741A P:19.805W PF:0.5164 Freq:50.00Hz Lamp Flux:2287.95x1 lm		
NAME: 球泡	TYPE:	WEIGHT:
SPEC.:	DIM.:	SERIAL No.:
MFR.: EVERFINE	SUR.: 1	Shielding Angle:



LUMINANCE cd/(m2)		
G (DEG)	C0/180	C90/270
85	2257	2103
80	1226	1144
75	886	829
70	720	674
65	623	584
60	560	526
55	516	486
50	482	456
45	456	432

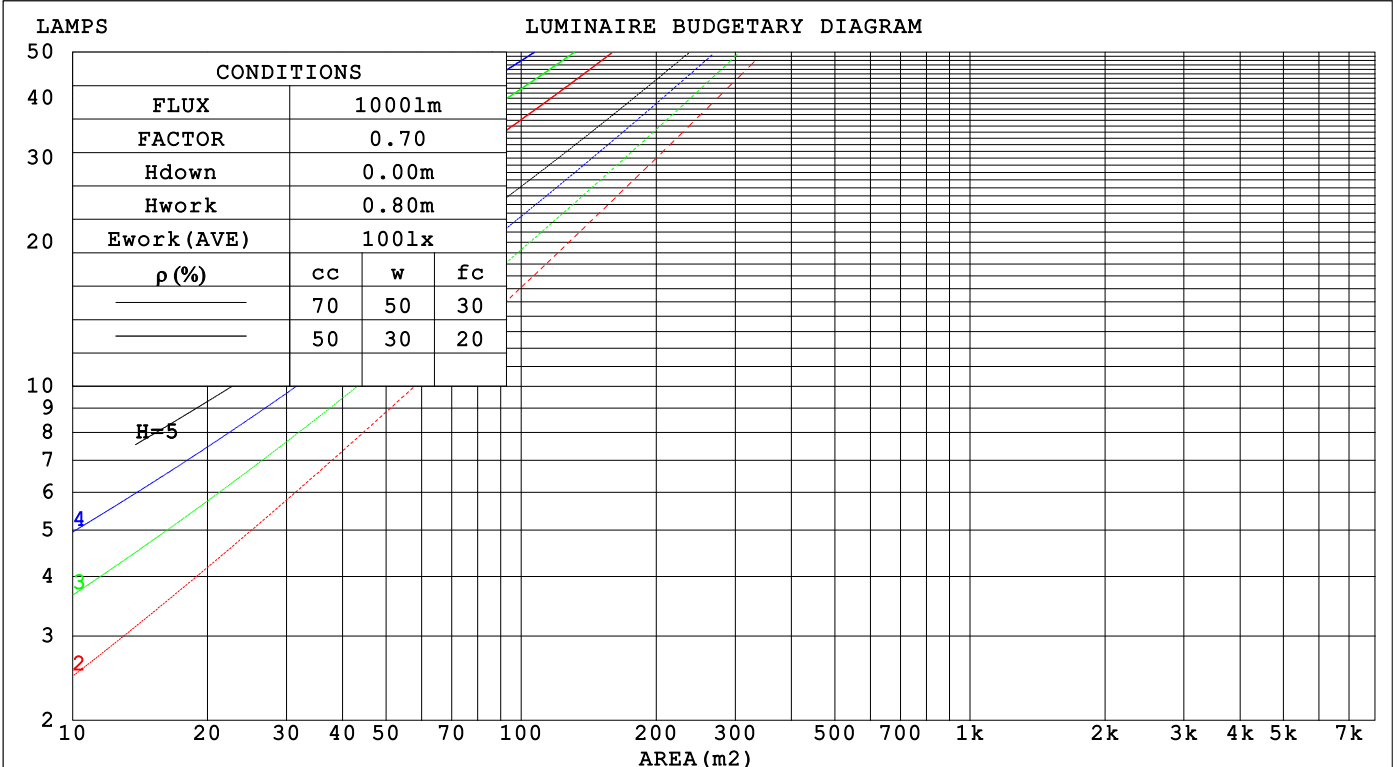
C Range: 0 - 360DEG
 C Interval: 22.5DEG
 Test Speed: HIGH
 Temperature:25.3°C
 Operators:DAMIN
 Test Date:2023-11-09

γ Range: 0 - 180DEG
 γ Interval: 5.0DEG
 Test System:EVERFINE GO-2000B_V1 SYSTEM V2.00.473
 Humidity:65.0%
 Test Distance:9.401m [K=1.0000]
 Remarks:

CU AND LUMINAIRE BUDGETARY ESTIMATE DIAGRAM

Test:U:220.32V I:0.1741A P:19.805W PF:0.5164 Freq:50.00Hz Lamp Flux:2287.95x1 lm		
NAME: 球泡	TYPE:	WEIGHT:
SPEC.:	DIM.:	SERIAL No.:
MFR.: EVERFINE	SUR.: 1	Shielding Angle:

pcc	80%			70%			50%			30%			10%			0
pw	50%	30%	10%	50%	30%	10%	50%	30%	10%	50%	30%	10%	50%	30%	10%	0
pfc	20%			20%			20%			20%			20%			0
RCR	RCR:Room Cavity Ratio						Coefficients of Utilization(CU)									
0.0	1.13	1.13	1.13	1.07	1.07	1.07	.96	.96	.96	.86	.86	.86	.77	.77	.77	.73
1.0	.92	.87	.81	.87	.82	.78	.78	.74	.70	.69	.66	.63	.61	.59	.57	.53
2.0	.78	.70	.63	.74	.67	.60	.66	.60	.55	.58	.54	.50	.52	.48	.44	.41
3.0	.67	.58	.51	.64	.55	.49	.57	.50	.44	.50	.45	.40	.44	.40	.36	.33
4.0	.59	.49	.42	.56	.47	.40	.50	.42	.37	.44	.38	.33	.39	.34	.30	.27
5.0	.52	.42	.35	.49	.40	.34	.44	.37	.31	.39	.33	.28	.35	.29	.25	.22
6.0	.46	.37	.30	.44	.35	.29	.39	.32	.27	.35	.29	.24	.31	.26	.22	.19
7.0	.42	.33	.26	.40	.31	.25	.36	.28	.23	.32	.26	.21	.28	.23	.19	.17
8.0	.38	.29	.23	.36	.28	.22	.32	.25	.20	.29	.23	.19	.26	.21	.17	.15
9.0	.34	.26	.20	.33	.25	.20	.30	.23	.18	.27	.21	.17	.24	.19	.15	.13
10.0	.32	.23	.18	.30	.23	.17	.27	.21	.16	.25	.19	.15	.22	.17	.14	.12



C Range: 0 - 360DEG
 C Interval: 22.5DEG
 Test Speed: HIGH
 Temperature:25.3°C
 Operators:DAMIN
 Test Date:2023-11-09

γ Range: 0 - 180DEG
 γ Interval: 5.0DEG
 Test System:EVERFINE GO-2000B_V1 SYSTEM V2.00.473
 Humidity:65.0%
 Test Distance:9.401m [K=1.0000]
 Remarks:

WEC AND CCEC

Test:U:220.32V I:0.1741A P:19.805W PF:0.5164 Freq:50.00Hz								
Lamp Flux:2287.95x1 lm								
NAME: 球泡			TYPE:			WEIGHT:		
SPEC.:			DIM.:			SERIAL No.:		
MFR.: EVERFINE			SUR.: 1			Shielding Angle:		

ρ_{CC}	80%			70%			50%			30%			10%			0
ρ_w	50%	30%	10%	50%	30%	10%	50%	30%	10%	50%	30%	10%	50%	30%	10%	0
ρ_{fc}	20%			20%			20%			20%			20%			0
RCR	RCR:Room Cavity Ratio						Wall Exitance Coefficients (WEC)									
0.0																
1.0	.408	.232	.073	.392	.224	.071	.363	.208	.067	.336	.194	.062	.312	.181	.058	
2.0	.346	.190	.058	.332	.183	.056	.306	.170	.053	.281	.158	.049	.259	.146	.046	
3.0	.304	.162	.048	.291	.156	.047	.267	.145	.044	.245	.134	.041	.225	.124	.038	
4.0	.272	.141	.042	.260	.136	.040	.239	.126	.038	.218	.117	.035	.199	.108	.033	
5.0	.246	.125	.036	.235	.121	.035	.216	.112	.033	.197	.104	.031	.180	.096	.029	
6.0	.225	.113	.032	.215	.109	.031	.197	.101	.029	.180	.093	.027	.164	.086	.026	
7.0	.207	.102	.029	.198	.099	.028	.181	.091	.026	.165	.085	.025	.150	.078	.023	
8.0	.191	.093	.026	.183	.090	.025	.167	.084	.024	.153	.077	.022	.139	.071	.021	
9.0	.178	.086	.024	.170	.083	.023	.156	.077	.022	.142	.071	.020	.130	.066	.019	
10.0	.166	.080	.022	.159	.077	.021	.146	.071	.020	.133	.066	.019	.121	.061	.018	

ρ_{CC}	80%			70%			50%			30%			10%			0
ρ_w	50%	30%	10%	50%	30%	10%	50%	30%	10%	50%	30%	10%	50%	30%	10%	0
ρ_{fc}	20%			20%			20%			20%			20%			0
RCR	RCR:Room Cavity Ratio						Ceiling Cavity Exitance Coefficients (CCEC)									
0.0	.397	.397	.397	.339	.339	.339	.232	.232	.232	.133	.133	.133	.043	.043	.043	
1.0	.395	.363	.335	.338	.312	.288	.231	.215	.199	.133	.124	.116	.043	.040	.037	
2.0	.389	.341	.301	.333	.294	.260	.228	.203	.181	.132	.118	.106	.042	.038	.035	
3.0	.382	.325	.280	.327	.281	.243	.225	.195	.170	.130	.114	.100	.042	.037	.033	
4.0	.374	.313	.267	.321	.271	.232	.221	.189	.163	.128	.110	.096	.041	.036	.032	
5.0	.366	.304	.257	.315	.263	.224	.217	.183	.158	.126	.108	.094	.040	.035	.031	
6.0	.359	.296	.251	.309	.256	.218	.213	.179	.154	.123	.105	.092	.040	.034	.030	
7.0	.352	.289	.246	.303	.251	.214	.209	.176	.152	.121	.104	.090	.039	.034	.030	
8.0	.345	.284	.242	.297	.246	.211	.206	.173	.150	.120	.102	.089	.039	.033	.030	
9.0	.339	.279	.239	.292	.242	.209	.202	.170	.148	.118	.101	.088	.038	.033	.029	
10.0	.333	.275	.237	.287	.239	.207	.199	.168	.147	.116	.099	.088	.038	.033	.029	

C Range: 0 - 360DEG
 C Interval: 22.5DEG
 Test Speed: HIGH
 Temperature:25.3°C
 Operators:DAMIN
 Test Date:2023-11-09

γ Range: 0 - 180DEG
 γ Interval: 5.0DEG
 Test System:EVERFINE GO-2000B_V1 SYSTEM V2.00.473
 Humidity:65.0%
 Test Distance:9.401m [K=1.0000]
 Remarks:

UGR(Unified Glare Rating) Table

Test:U:220.32V I:0.1741A P:19.805W PF:0.5164 Freq:50.00Hz										
Lamp Flux:2287.95x1 lm										
NAME: 球泡			TYPE:				WEIGHT:			
SPEC.:			DIM.:				SERIAL No.:			
MFR.: EVERFINE			SUR.: 1				Shielding Angle:			
ceiling/cavity	0.7	0.7	0.5	0.5	0.3	0.7	0.7	0.5	0.5	0.3
walls	0.5	0.3	0.5	0.3	0.3	0.5	0.3	0.5	0.3	0.3
working plane	0.2	0.2	0.2	0.2	0.2	0.2	0.2	0.2	0.2	0.2
Room dimensions	Viewed crosswise					Viewed endwise				
x = 2H y = 2H	6.2	7.5	6.8	8.1	8.8	5.9	7.2	6.5	7.8	8.6
3H	8.8	10.0	9.4	10.7	11.4	8.5	9.7	9.1	10.4	11.1
4H	10.3	11.4	10.9	12.1	12.9	9.9	11.1	10.6	11.8	12.6
6H	11.9	13.0	12.6	13.7	14.5	11.5	12.6	12.2	13.3	14.1
8H	12.8	13.8	13.5	14.5	15.4	12.4	13.4	13.1	14.1	15.0
12H	13.8	14.8	14.5	15.5	16.4	13.4	14.4	14.1	15.1	16.0
4H 2H	6.9	8.1	7.6	8.8	9.6	6.8	7.9	7.4	8.6	9.4
3H	9.8	10.8	10.5	11.5	12.3	9.5	10.5	10.2	11.3	12.1
4H	11.4	12.3	12.1	13.1	13.9	11.1	12.0	11.9	12.8	13.7
6H	13.2	14.0	14.0	14.8	15.7	12.9	13.7	13.6	14.5	15.4
8H	14.2	15.0	15.0	15.8	16.7	13.9	14.6	14.6	15.4	16.3
12H	15.4	16.1	16.1	16.9	17.8	15.0	15.7	15.8	16.5	17.5
8H 4H	12.0	12.7	12.7	13.5	14.4	11.8	12.5	12.5	13.3	14.2
6H	14.0	14.7	14.8	15.5	16.5	13.8	14.5	14.6	15.3	16.2
8H	15.2	15.8	16.1	16.6	17.6	15.0	15.6	15.8	16.4	17.4
12H	16.6	17.2	17.5	18.0	19.0	16.3	16.8	17.1	17.7	18.7
12H 4H	12.1	12.8	12.9	13.6	14.6	11.9	12.6	12.7	13.4	14.4
6H	14.3	14.9	15.1	15.7	16.7	14.1	14.7	14.9	15.5	16.5
8H	15.6	16.1	16.4	17.0	18.0	15.4	15.9	16.2	16.7	17.7
Variations with the observer position at spacings(CIE Pub.117):										
S = 1.0H	+ 0.1 / - 0.1					+ 0.1 / - 0.1				
1.5H	+ 0.2 / - 0.3					+ 0.2 / - 0.3				
2.0H	+ 0.3 / - 0.4					+ 0.3 / - 0.4				

CIE Pub.117, 2288 lm Total Lamp Luminous Flux Correct (8log(F/F0) = 2.9)
Area: 1 m2

C Range: 0 - 360DEG
C Interval: 22.5DEG
Test Speed: HIGH
Temperature:25.3°C
Operators:DAMIN
Test Date:2023-11-09

γ Range: 0 - 180DEG
γ Interval: 5.0DEG
Test System:EVERFINE GO-2000B_V1 SYSTEM V2.00.473
Humidity:65.0%
Test Distance:9.401m [K=1.0000]
Remarks:

UTILIZATION FACTORS TABLE

Test:U:220.32V I:0.1741A P:19.805W PF:0.5164 Freq:50.00Hz Lamp Flux:2287.95x1 lm		
NAME: 球泡	TYPE:	WEIGHT:
SPEC.:	DIM.:	SERIAL No.:
MFR.: EVERFINE	SUR.: 1	Shielding Angle:

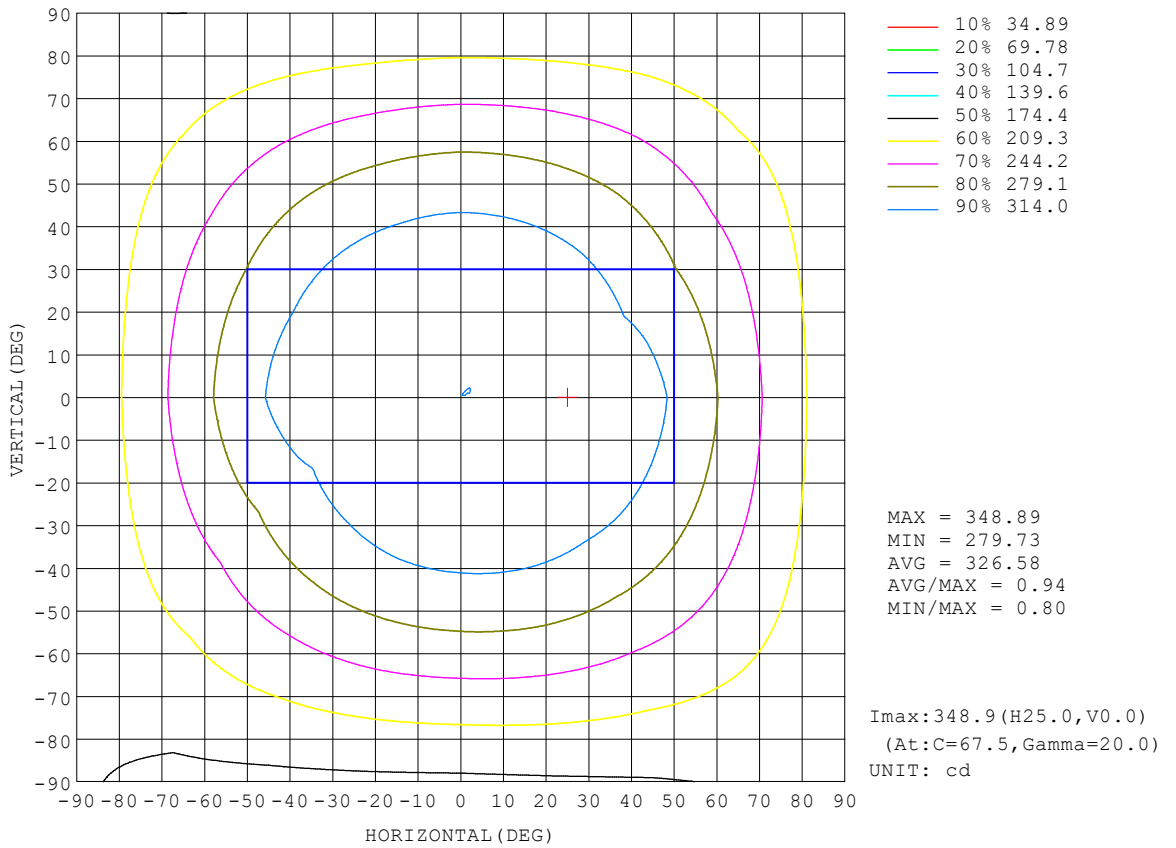
REFLECTANCE										
Ceiling	0.8	0.8	0.8	0.7	0.7	0.7	0.5	0.5	0.5	0
Walls	0.7	0.5	0.3	0.7	0.5	0.3	0.7	0.5	0.3	0
Working plane	0.2	0.2	0.2	0.2	0.2	0.2	0.2	0.2	0.2	0
ROOM INDEX	UTILIZATION FACTORS (PERCENT) $k(RI) \times RCR = 5$									
k = 0.60	43	30	23	42	30	23	40	29	22	15
0.80	52	39	30	50	38	30	47	36	29	20
1.00	60	46	37	57	45	36	53	45	35	25
1.25	67	53	44	64	51	43	59	48	41	30
1.50	72	59	49	69	57	48	63	53	45	33
2.00	79	67	58	76	65	56	69	60	53	39
2.50	84	73	64	80	70	62	72	64	58	43
3.00	88	78	70	84	74	67	76	68	62	46
4.00	93	84	77	88	80	74	80	73	68	51
5.00	96	88	82	91	84	78	82	77	72	54
ROOM INDEX	UF(total)									Direct
According to DIN EN 13032-2 2004			Suspended				SHRNOM = 1.25			

C Range: 0 - 360DEG
 C Interval: 22.5DEG
 Test Speed: HIGH
 Temperature:25.3°C
 Operators:DAMIN
 Test Date:2023-11-09

γ Range: 0 - 180DEG
 γ Interval: 5.0DEG
 Test System:EVERFINE GO-2000B_V1 SYSTEM V2.00.473
 Humidity:65.0%
 Test Distance:9.401m [K=1.0000]
 Remarks:

ISOCANDELA DIAGRAM

Test:U:220.32V I:0.1741A P:19.805W PF:0.5164 Freq:50.00Hz Lamp Flux:2287.95x1 lm		
NAME: 球泡	TYPE:	WEIGHT:
SPEC.:	DIM.:	SERIAL No.:
MFR.: EVERFINE	SUR.: 1	Shielding Angle:

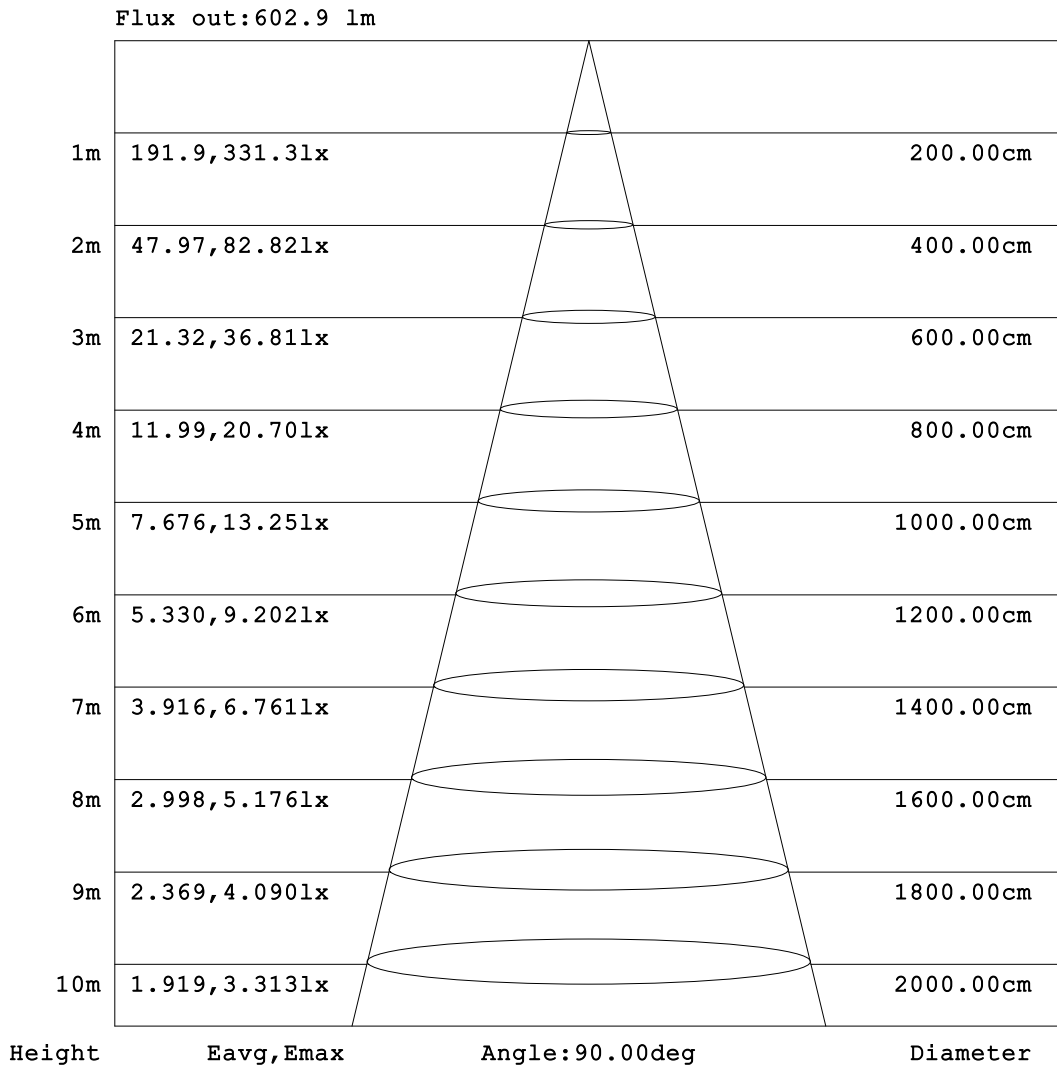


C Range: 0 - 360DEG
 C Interval: 22.5DEG
 Test Speed: HIGH
 Temperature: 25.3°C
 Operators: DAMIN
 Test Date: 2023-11-09

γ Range: 0 - 180DEG
 γ Interval: 5.0DEG
 Test System: EVERFINE GO-2000B_V1 SYSTEM V2.00.473
 Humidity: 65.0%
 Test Distance: 9.401m [K=1.0000]
 Remarks:

AAI Figure

Test:U:220.32V I:0.1741A P:19.805W PF:0.5164 Freq:50.00Hz Lamp Flux:2287.95x1 lm		
NAME: 球泡	TYPE:	WEIGHT:
SPEC.:	DIM.:	SERIAL No.:
MFR.: EVERFINE	SUR.: 1	Shielding Angle:



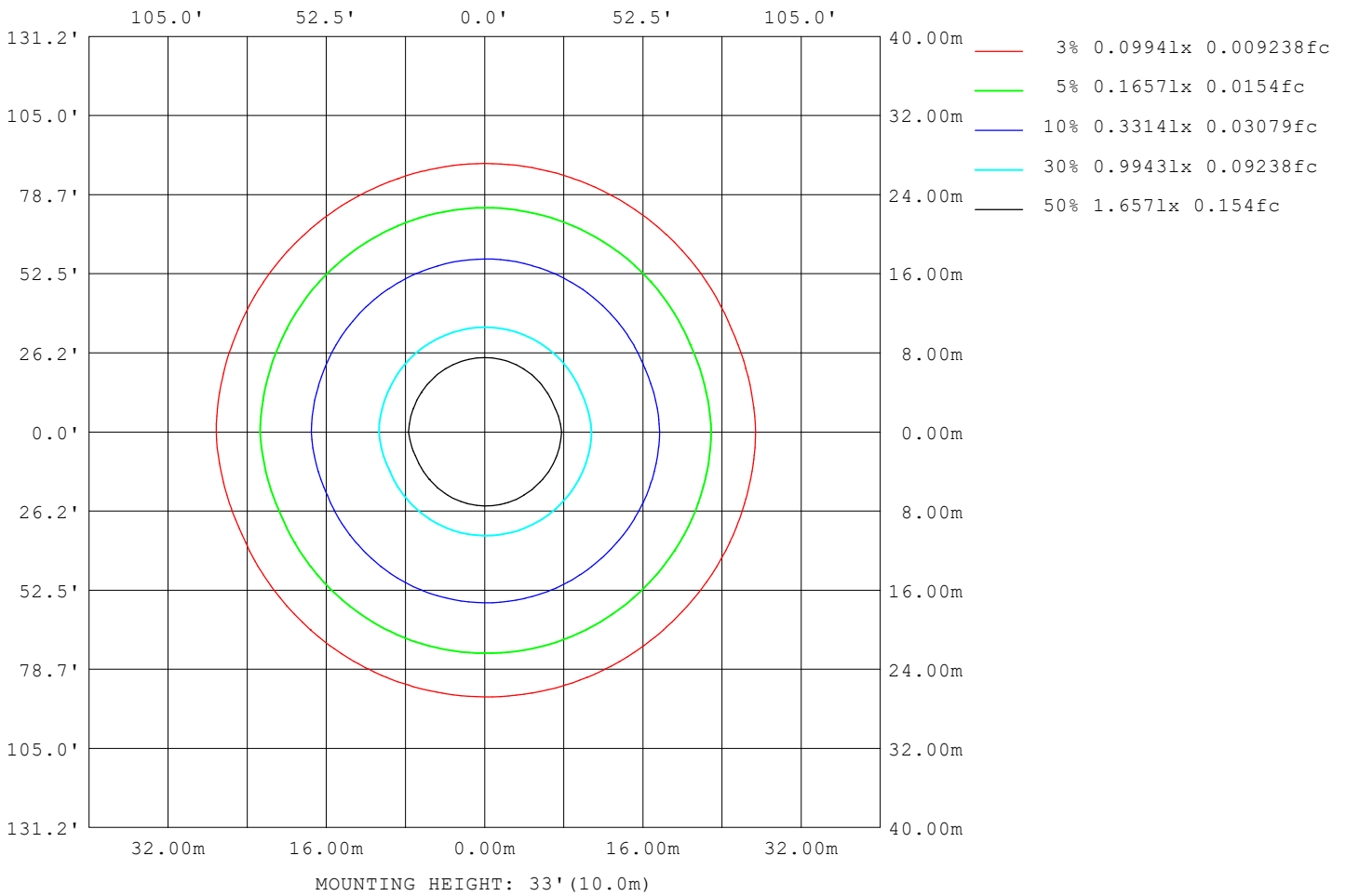
Note:The Curves indicate the illuminated area and the average illumination when the luminaire is at different distance.

C Range: 0 - 360DEG
C Interval: 22.5DEG
Test Speed: HIGH
Temperature:25.3°C
Operators:DAMIN
Test Date:2023-11-09

γ Range: 0 - 180DEG
γ Interval: 5.0DEG
Test System:EVERFINE GO-2000B_V1 SYSTEM V2.00.473
Humidity:65.0%
Test Distance:9.401m [K=1.0000]
Remarks:

ISOLUX DIAGRAM

Test:U:220.32V I:0.1741A P:19.805W PF:0.5164 Freq:50.00Hz Lamp Flux:2287.95x1 lm		
NAME: 球泡	TYPE:	WEIGHT:
SPEC.:	DIM.:	SERIAL No.:
MFR.: EVERFINE	SUR.: 1	Shielding Angle:



C Range: 0 - 360DEG
C Interval: 22.5DEG
Test Speed: HIGH
Temperature:25.3°C
Operators:DAMIN
Test Date:2023-11-09

γ Range: 0 - 180DEG
γ Interval: 5.0DEG
Test System:EVERFINE GO-2000B_V1 SYSTEM V2.00.473
Humidity:65.0%
Test Distance:9.401m [K=1.0000]
Remarks:

LED Avg.L Report

Test:U:220.32V I:0.1741A P:19.805W PF:0.5164 Freq:50.00Hz Lamp Flux:2287.95x1 lm		
NAME: 球泡	TYPE:	WEIGHT:
SPEC.:	DIM.:	SERIAL No.:
MFR.: EVERFINE	SUR.: 1	Shielding Angle:

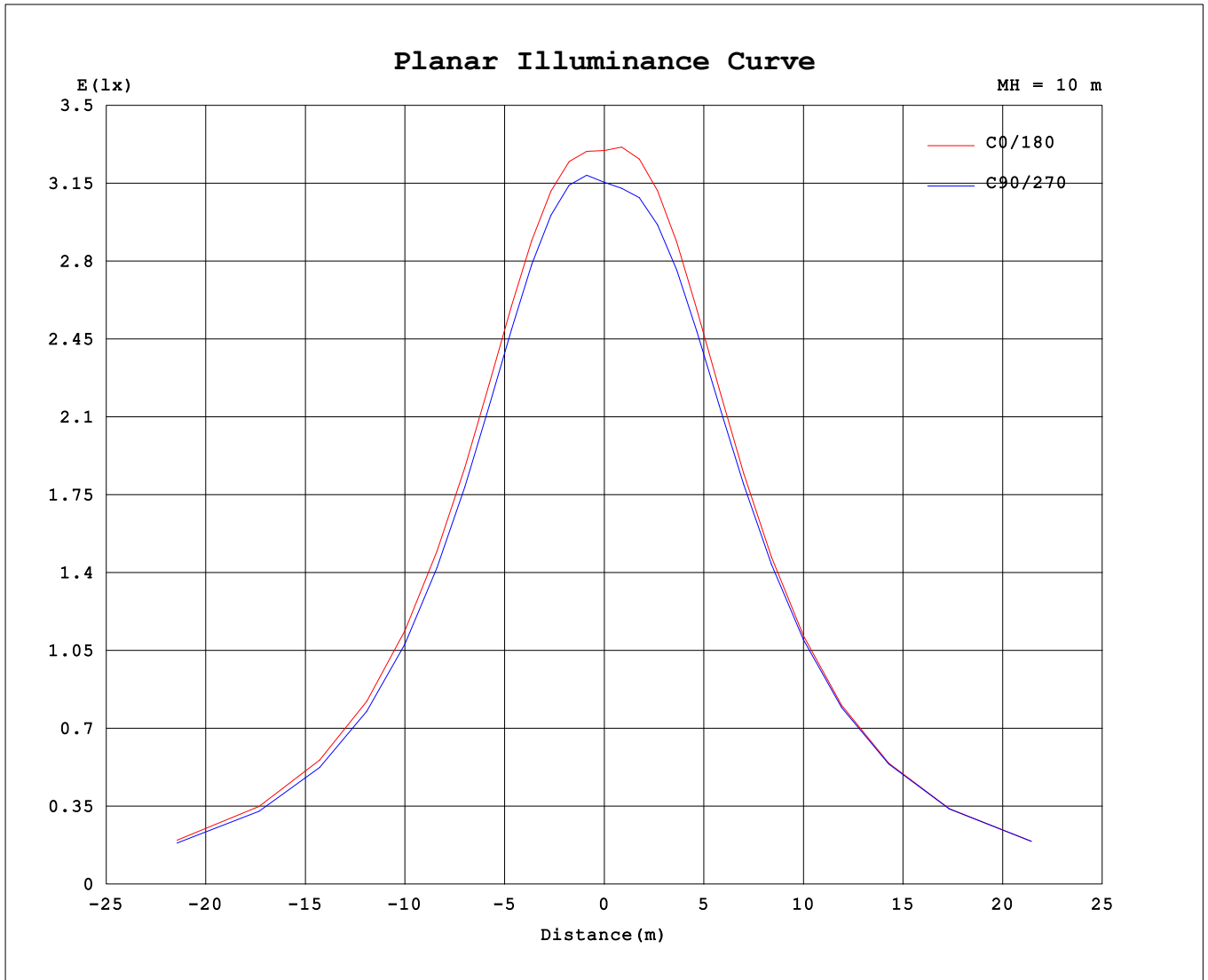
AvgL	cd/m2
L_0~180 (65) av	593
L_0~180 (75) av	844
L_0~180 (85) av	2152
L_90~270 (65) av	600
L_90~270 (75) av	854
L_90~270 (85) av	2174
L_45 (65) av	597
L_45 (75) av	850
L_45 (85) av	2165

Standard: GB/T 29293-2012

C Range: 0 - 360DEG
 C Interval: 22.5DEG
 Test Speed: HIGH
 Temperature:25.3℃
 Operators:DAMIN
 Test Date:2023-11-09

γ Range: 0 - 180DEG
 γ Interval: 5.0DEG
 Test System:EVERFINE GO-2000B_V1 SYSTEM V2.00.473
 Humidity:65.0%
 Test Distance:9.401m [K=1.0000]
 Remarks:

Planar Illuminance Curve



C Range: 0 - 360DEG
 C Interval: 22.5DEG
 Test Speed: HIGH
 Temperature: 25.3°C
 Operators: DAMIN
 Test Date: 2023-11-09

γ Range: 0 - 180DEG
 γ Interval: 5.0DEG
 Test System: EVERFINE GO-2000B_V1 SYSTEM V2.00.473
 Humidity: 65.0%
 Test Distance: 9.401m [K=1.0000]
 Remarks:

LUMINOUS DISTRIBUTION INTENSITY DATA

Test:U:220.32V I:0.1741A P:19.805W PF:0.5164 Freq:50.00Hz Lamp Flux:2287.95x1 lm		
NAME: 球泡	TYPE:	WEIGHT:
SPEC.:	DIM.:	SERIAL No.:
MFR.: EVERFINE	SUR.: 1	Shielding Angle:

Table--1

UNIT: cd

C (DEG) \ γ (DEG)	0	22.5	45	67.5	90	112.5	135	157.5	180	202.5	225	247.5	270	292.5	315	337.5			
0	318	318	318	318	318	318	318	318	318	318	318	318	318	318	318	318			
5	321	323	324	325	325	325	325	324	323	322	321	320	319	319	319	321			
10	328	329	331	332	332	332	331	330	329	328	327	327	326	326	326	328			
15	333	335	335	336	336	336	336	335	334	333	332	332	332	332	332	333			
20	336	337	338	339	338	338	337	336	335	334	335	335	335	336	336	336			
25	337	337	337	338	338	337	336	335	334	334	335	336	336	337	337	337			
30	334	335	334	335	334	334	332	331	331	330	332	333	334	335	335	335			
35	329	329	328	329	328	327	326	325	325	324	327	328	330	331	331	330			
40	321	321	320	320	319	318	316	316	316	316	319	321	323	324	324	323			
45	311	311	309	310	308	307	306	305	305	305	309	311	313	315	315	314			
50	299	299	297	297	295	295	293	292	292	293	297	299	302	303	304	302			
55	285	285	283	283	281	280	278	278	278	279	283	285	289	290	290	289			
60	270	270	267	267	265	265	262	262	263	264	268	271	274	275	275	274			
65	254	253	251	251	249	249	246	246	247	248	252	255	258	259	260	258			
70	238	237	235	234	233	232	230	231	231	232	236	239	242	243	243	241			
75	221	221	218	218	216	216	214	215	216	216	220	223	226	227	227	225			
80	205	205	202	202	200	200	199	199	200	201	205	207	210	211	211	209			
85	190	189	187	186	185	185	184	184	185	186	189	191	194	195	195	193			
90	175	174	172	172	170	170	169	170	171	171	175	176	179	179	179	178			
95	160	160	158	157	156	156	156	156	158	158	161	162	164	165	165	163			
100	147	147	144	144	143	143	143	144	145	145	148	149	151	151	151	150			
105	135	134	132	132	131	131	131	132	133	133	136	137	138	138	138	137			
110	123	123	121	120	119	120	120	121	122	122	124	125	126	127	126	125			
115	112	112	110	110	109	109	109	110	112	112	114	114	115	116	115	114			
120	102	102	99.5	99.3	98.3	98.8	98.9	100	101	101	103	104	105	105	105	104			
125	91.8	91.5	89.4	89.1	88.1	88.6	88.7	89.9	91.3	91.4	93.4	93.9	94.9	94.8	94.7	93.7			
130	81.9	81.5	79.4	79.0	78.0	78.5	78.7	80.0	81.3	81.6	83.4	83.9	84.9	84.7	84.6	83.7			
135	72.0	71.5	69.5	69.0	68.1	68.6	68.6	69.9	71.3	71.6	73.5	74.0	75.0	74.7	74.6	73.7			
140	62.2	61.7	59.7	59.1	58.2	58.6	58.7	60.0	61.4	61.9	63.6	64.1	65.1	64.9	64.8	63.9			
145	52.6	52.0	50.0	49.4	48.4	48.8	48.9	50.2	51.5	52.1	53.9	54.4	55.3	55.1	55.0	54.0			
150	43.1	42.4	40.5	39.8	38.8	39.1	39.2	40.5	41.8	42.5	44.2	44.7	45.7	45.5	45.3	44.4			
155	33.8	33.0	31.2	30.4	29.5	29.7	29.9	31.1	32.3	33.1	34.7	35.4	36.2	36.1	35.9	35.0			
160	24.9	24.0	22.3	21.5	20.6	20.8	21.0	22.1	23.3	24.2	25.6	26.4	27.1	27.0	26.8	25.9			
165	16.7	15.8	14.4	13.5	12.8	12.8	13.0	14.0	15.0	16.0	17.2	18.0	18.6	18.5	18.2	17.5			
170	9.59	8.94	7.87	7.21	6.64	6.65	6.86	7.54	8.36	9.08	10.1	10.6	11.2	11.0	10.9	10.2			
175	4.96	4.65	4.32	4.09	4.05	4.08	4.17	4.26	4.55	4.87	5.27	5.54	5.69	5.65	5.53	5.28			
180	4.07	4.15	4.06	4.10	4.07	4.09	4.11	4.12	4.17	4.10	4.14	4.12	4.13	4.12	4.12	4.12			

C Range: 0 - 360DEG
 C Interval: 22.5DEG
 Test Speed: HIGH
 Temperature:25.3℃
 Operators:DAMIN
 Test Date:2023-11-09

γ Range: 0 - 180DEG
 γ Interval: 5.0DEG
 Test System:EVERFINE GO-2000B_V1 SYSTEM V2.00.473
 Humidity:65.0%
 Test Distance:9.401m [K=1.0000]
 Remarks: