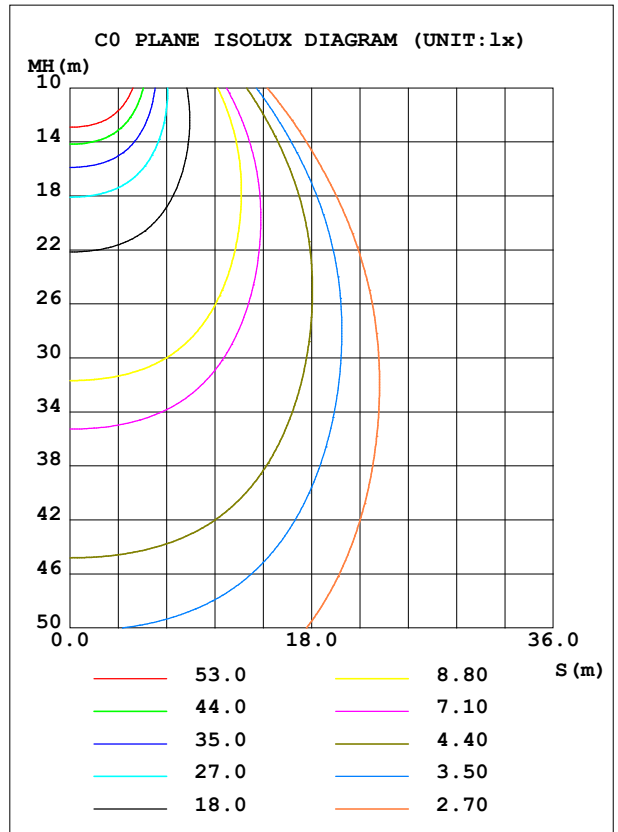
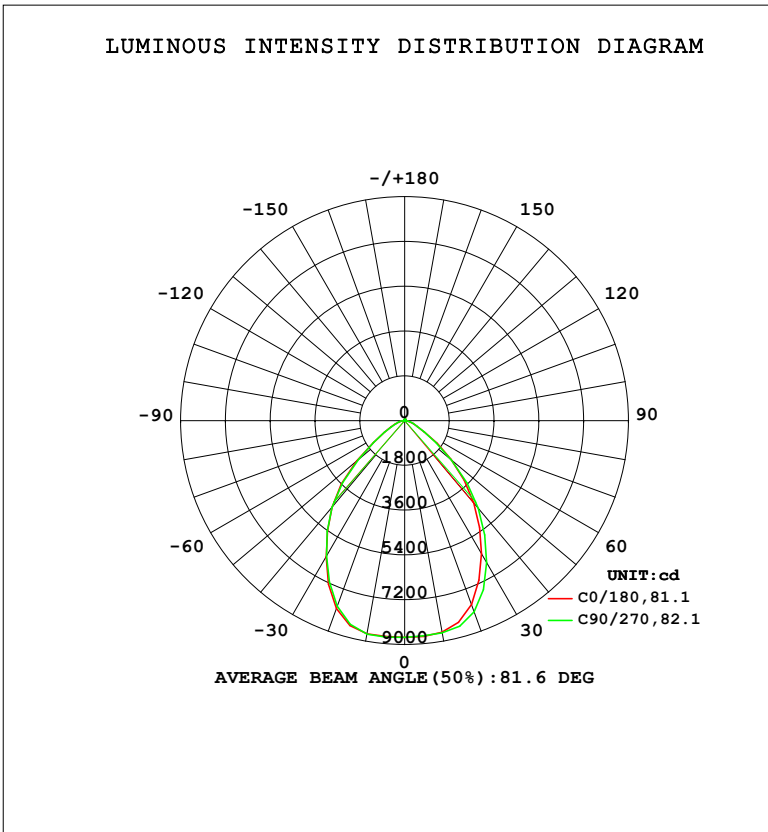


LUMINAIRE PHOTOMETRIC TEST REPORT

Test:U:220.24V I:0.4967A P:106.73W PF:0.9755 Freq:50.00Hz Lamp Flux:15108.2x1 lm		
NAME: 工矿灯	TYPE: 709	WEIGHT:
SPEC.:	DIM.:	SERIAL No.:
MFR.: EVERFINE	SUR.: 1	Shielding Angle:

DATA OF LAMP		PHOTOMETRIC DATA				Eff: 141.56 lm/W
MODEL	709	I <sub>max</sub> (cd)	8739	S/MH (C0/180)	1.11	
NOMINAL POWER (W)	100	LOR (%)	100.0	S/MH (C90/270)	1.10	
RATED VOLTAGE (V)	220	TOTAL FLUX (lm)	15108	η UP, DN (C0-180)	0.5, 49.6	
NOMINAL FLUX (lm)	15108.2	CIE CLASS	DIRECT	η UP, DN (C180-360)	0.6, 49.3	
LAMPS INSIDE	1	η up (%)	1.1	CIBSE SHR NOM	1.00	
TEST VOLTAGE (V)	219.5	η down (%)	98.9	CIBSE SHR MAX	1.15	



C Range: 0 - 360DEG  
 C Interval: 22.5DEG  
 Test Speed: HIGH  
 Temperature: 25.3°C  
 Operators: DAMIN  
 Test Date: 2023-11-18

γ Range: 0 - 180DEG  
 γ Interval: 5.0DEG  
 Test System: EVERFINE GO-2000B\_V1 SYSTEM V2.00.473  
 Humidity: 65.0%  
 Test Distance: 9.401m [K=1.0000]  
 Remarks:

ZONAL FLUX DIAGRAM

ZONAL FLUX DIAGRAM:

$\gamma$	C0	C45	C90	C135	C180	C225	C270	C315	$\gamma$	$\Phi$ zone	$\Phi$ total	%lum,lamp
10	8635	8662	8661	8677	8705	8739	8717	8703	0- 10	830.6	830.6	5.5,5.5
20	7857	8202	8178	8313	8038	8289	7935	8157	10- 20	2394	3224	21.3,21.3
30	6175	6623	6588	6784	6324	6652	6286	6465	20- 30	3391	6615	43.8,43.8
40	4339	4212	4606	4258	4559	4180	4554	4122	30- 40	3386	10002	66.2,66.2
50	2434	2169	2463	2189	2528	2243	2426	2171	40- 50	2553	12555	83.1,83.1
60	934.6	903.2	906.5	897.5	937.8	931.6	937.6	904.3	50- 60	1391	13946	92.3,92.3
70	373.5	409.9	370.4	413.3	397.9	436.2	394.3	433.7	60- 70	618.0	14564	96.4,96.4
80	159.4	177.5	148.4	175.8	160.6	191.1	170.4	198.0	70- 80	297.9	14862	98.4,98.4
90	3.455	3.416	3.311	3.302	4.011	3.905	3.904	3.884	80- 90	86.65	14949	98.9,98.9
100	6.598	6.415	6.547	6.300	7.873	7.684	7.850	7.658	90-100	5.682	14954	99,99
110	12.37	12.21	12.30	11.97	14.23	14.26	14.51	14.39	100-110	10.59	14965	99.1,99.1
120	20.46	20.43	20.26	20.03	22.83	23.12	23.47	23.42	110-120	17.23	14982	99.2,99.2
130	29.72	29.68	29.43	29.10	32.32	32.75	33.15	33.24	120-130	23.65	15006	99.3,99.3
140	38.77	38.77	38.52	38.06	41.47	41.89	42.18	42.45	130-140	27.60	15034	99.5,99.5
150	46.90	46.83	46.60	46.11	49.52	49.58	49.95	50.08	140-150	27.70	15061	99.7,99.7
160	54.96	54.62	54.45	53.97	57.12	56.65	56.99	56.83	150-160	23.91	15085	99.8,99.8
170	62.71	63.17	62.79	62.37	64.01	63.85	64.15	64.04	160-170	16.79	15102	100,100
180	68.21	68.55	67.94	68.30	68.54	68.83	68.18	68.48	170-180	6.261	15108	100,100
DEG	LUMINOUS INTENSITY:cd									UNIT:lm		

Conical surface Flux(90deg): 11418 lm

%lum = 75.6%

%lamp = 75.6%

Conical surface Flux(130deg): 14313 lm

%lum = 94.7%

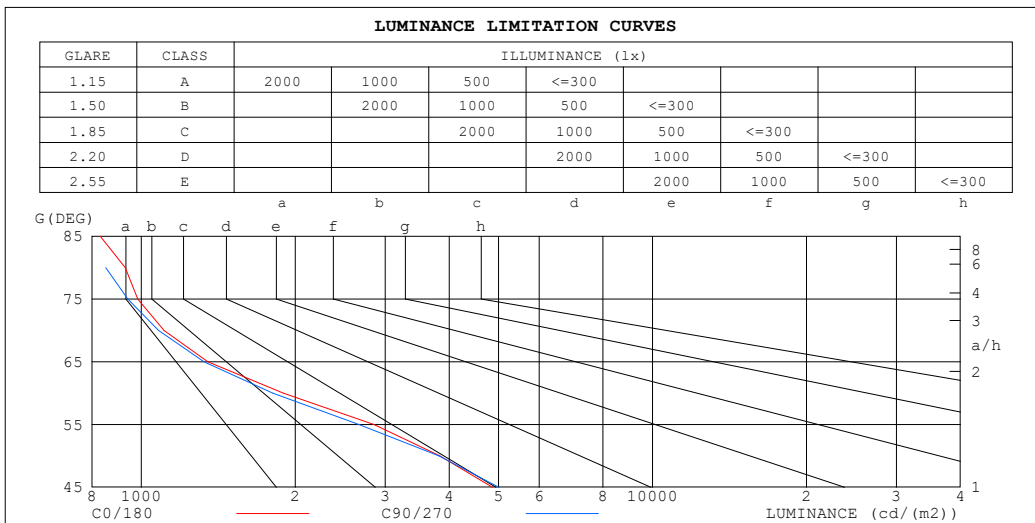
%lamp = 94.7%

C Range: 0 - 360DEG  
 C Interval: 22.5DEG  
 Test Speed: HIGH  
 Temperature:25.3°C  
 Operators:DAMIN  
 Test Date:2023-11-18

$\gamma$  Range: 0 - 180DEG  
 $\gamma$  Interval: 5.0DEG  
 Test System:EVERFINE GO-2000B\_V1 SYSTEM V2.00.473  
 Humidity:65.0%  
 Test Distance:9.401m [K=1.0000]  
 Remarks:

**LUMINANCE LIMITATION CURVES**

Test:U:220.24V I:0.4967A P:106.73W PF:0.9755 Freq:50.00Hz Lamp Flux:15108.2x1 lm		
NAME: 工矿灯	TYPE: 709	WEIGHT:
SPEC.:	DIM.:	SERIAL No.:
MFR.: EVERFINE	SUR.: 1	Shielding Angle:



LUMINANCE cd/(m2)		
G (DEG)	C0/180	C90/270
85	831	633
80	931	852
75	984	941
70	1108	1080
65	1350	1325
60	1896	1808
55	2850	2664
50	3840	3820
45	4860	5007

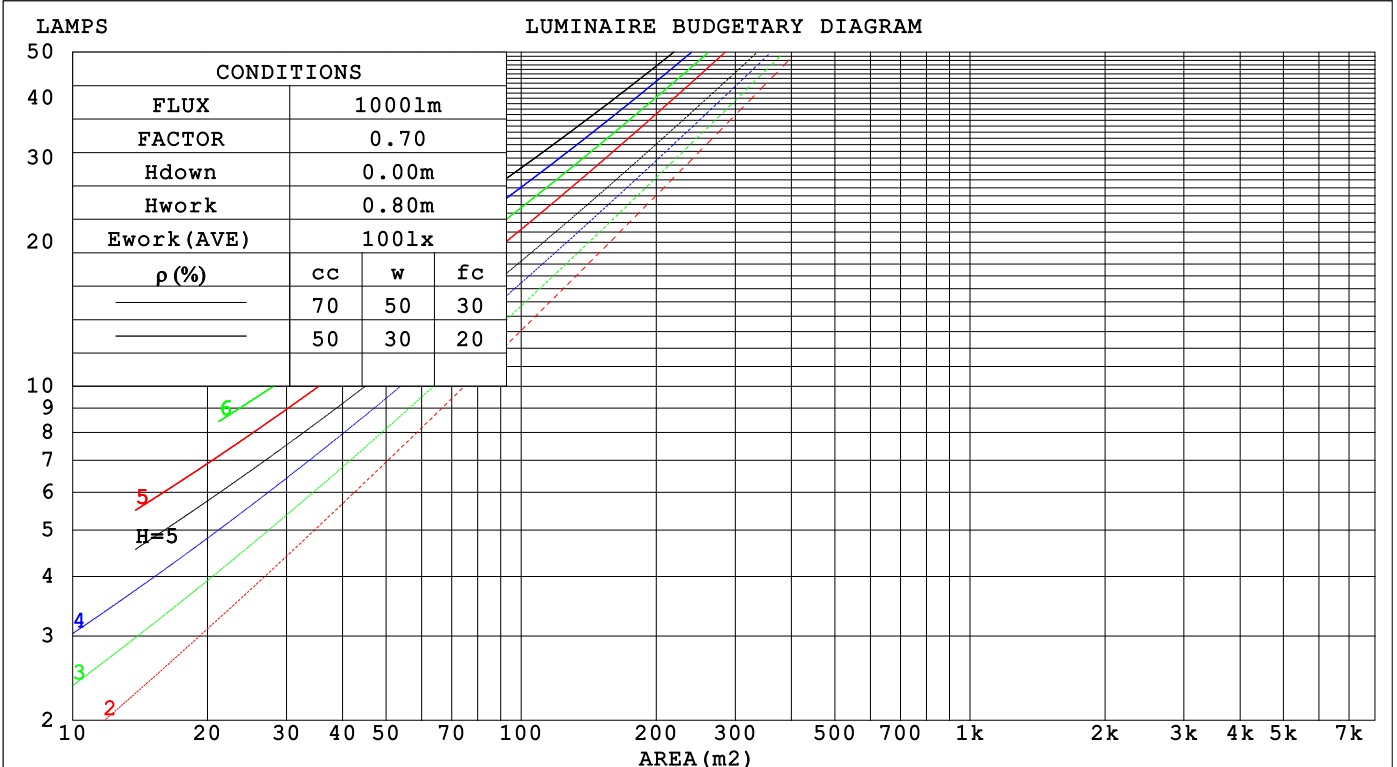
C Range: 0 - 360DEG  
 C Interval: 22.5DEG  
 Test Speed: HIGH  
 Temperature:25.3°C  
 Operators:DAMIN  
 Test Date:2023-11-18

γ Range: 0 - 180DEG  
 γ Interval: 5.0DEG  
 Test System:EVERFINE GO-2000B\_V1 SYSTEM V2.00.473  
 Humidity:65.0%  
 Test Distance:9.401m [K=1.0000]  
 Remarks:

**CU AND LUMINAIRE BUDGETARY ESTIMATE DIAGRAM**

Test:U:220.24V I:0.4967A P:106.73W PF:0.9755 Freq:50.00Hz Lamp Flux:15108.2x1 lm		
NAME: 工矿灯	TYPE: 709	WEIGHT:
SPEC.:	DIM.:	SERIAL No.:
MFR.: EVERFINE	SUR.: 1	Shielding Angle:

ρcc	80%			70%			50%			30%			10%			0
ρw	50%	30%	10%	50%	30%	10%	50%	30%	10%	50%	30%	10%	50%	30%	10%	0
ρfc	20%			20%			20%			20%			20%			0
RCR	RCR:Room Cavity Ratio      Coefficients of Utilization(CU)															
0.0	1.19	1.19	1.19	1.16	1.16	1.16	1.11	1.11	1.11	1.06	1.06	1.06	1.01	1.01	1.01	.99
1.0	1.08	1.04	1.01	1.05	1.02	.90	1.01	.99	.96	.97	.95	.93	.93	.92	.90	.88
2.0	.97	.92	.87	.95	.90	.86	.92	.88	.84	.88	.85	.82	.85	.83	.80	.78
3.0	.88	.81	.76	.86	.80	.75	.83	.78	.74	.81	.76	.73	.78	.75	.71	.70
4.0	.80	.73	.67	.79	.72	.67	.76	.70	.66	.74	.69	.65	.72	.67	.64	.62
5.0	.73	.65	.60	.72	.65	.60	.70	.64	.59	.68	.62	.58	.66	.61	.58	.56
6.0	.67	.59	.54	.66	.59	.54	.64	.58	.53	.62	.57	.53	.61	.56	.52	.50
7.0	.61	.54	.49	.61	.54	.48	.59	.53	.48	.58	.52	.48	.56	.51	.47	.46
8.0	.57	.49	.44	.56	.49	.44	.55	.48	.44	.54	.48	.44	.52	.47	.43	.42
9.0	.53	.45	.41	.52	.45	.40	.51	.45	.40	.50	.44	.40	.49	.44	.40	.38
10.0	.49	.42	.37	.49	.42	.37	.48	.41	.37	.47	.41	.37	.46	.40	.37	.35



C Range: 0 - 360DEG  
 C Interval: 22.5DEG  
 Test Speed: HIGH  
 Temperature:25.3°C  
 Operators:DAMIN  
 Test Date:2023-11-18

γ Range: 0 - 180DEG  
 γ Interval: 5.0DEG  
 Test System:EVERFINE GO-2000B\_V1 SYSTEM V2.00.473  
 Humidity:65.0%  
 Test Distance:9.401m [K=1.0000]  
 Remarks:

WEC AND CCEC

Test:U:220.24V I:0.4967A P:106.73W PF:0.9755 Freq:50.00Hz		
Lamp Flux:15108.2x1 lm		
NAME: 工矿灯	TYPE: 709	WEIGHT:
SPEC.:	DIM.:	SERIAL No.:
MFR.: EVERFINE	SUR.: 1	Shielding Angle:

ρ <sub>CC</sub>	80%			70%			50%			30%			10%			0
ρ <sub>w</sub>	50%	30%	10%	50%	30%	10%	50%	30%	10%	50%	30%	10%	50%	30%	10%	0
ρ <sub>fc</sub>	20%			20%			20%			20%			20%			0
RCR	RCR:Room Cavity Ratio						Wall Exitance Coefficients(WEC)									
0.0																
1.0	.234	.133	.042	.227	.129	.041	.213	.122	.039	.201	.116	.037	.190	.110	.035	
2.0	.225	.124	.038	.219	.121	.037	.208	.115	.036	.197	.110	.035	.187	.106	.033	
3.0	.214	.114	.034	.208	.112	.034	.198	.107	.033	.189	.103	.032	.180	.100	.031	
4.0	.202	.105	.031	.197	.103	.030	.188	.100	.030	.180	.096	.029	.172	.093	.028	
5.0	.190	.097	.028	.186	.095	.028	.178	.093	.027	.171	.090	.027	.164	.087	.026	
6.0	.180	.090	.026	.176	.089	.026	.169	.086	.025	.162	.084	.025	.156	.082	.024	
7.0	.170	.084	.024	.166	.083	.024	.160	.081	.023	.154	.079	.023	.148	.077	.023	
8.0	.161	.078	.022	.158	.078	.022	.152	.076	.022	.147	.074	.021	.141	.073	.021	
9.0	.152	.074	.021	.150	.073	.020	.144	.071	.020	.140	.070	.020	.135	.069	.020	
10.0	.145	.069	.019	.142	.069	.019	.138	.067	.019	.133	.066	.019	.129	.065	.019	

ρ <sub>CC</sub>	80%			70%			50%			30%			10%			0
ρ <sub>w</sub>	50%	30%	10%	50%	30%	10%	50%	30%	10%	50%	30%	10%	50%	30%	10%	0
ρ <sub>fc</sub>	20%			20%			20%			20%			20%			0
RCR	RCR:Room Cavity Ratio						Ceiling Cavity Exitance Coefficients(CCEC)									
0.0	.199	.199	.199	.170	.170	.170	.116	.116	.116	.067	.067	.067	.021	.021	.021	
1.0	.183	.165	.148	.157	.142	.128	.107	.097	.088	.062	.056	.051	.020	.018	.017	
2.0	.172	.140	.114	.147	.121	.099	.101	.084	.069	.058	.049	.040	.019	.016	.013	
3.0	.162	.122	.090	.139	.105	.078	.095	.073	.055	.055	.043	.032	.018	.014	.011	
4.0	.153	.108	.074	.132	.093	.064	.091	.065	.045	.052	.038	.027	.017	.012	.009	
5.0	.146	.097	.061	.125	.084	.053	.086	.059	.038	.050	.035	.022	.016	.011	.007	
6.0	.139	.089	.052	.119	.077	.046	.082	.054	.032	.048	.032	.019	.015	.010	.006	
7.0	.133	.081	.045	.114	.071	.040	.079	.049	.028	.046	.029	.017	.015	.010	.006	
8.0	.127	.076	.040	.109	.066	.035	.076	.046	.025	.044	.027	.015	.014	.009	.005	
9.0	.122	.071	.036	.105	.061	.031	.073	.043	.022	.042	.025	.013	.014	.008	.004	
10.0	.117	.066	.033	.101	.058	.029	.070	.041	.020	.041	.024	.012	.013	.008	.004	

C Range: 0 - 360DEG  
 C Interval: 22.5DEG  
 Test Speed: HIGH  
 Temperature:25.3°C  
 Operators:DAMIN  
 Test Date:2023-11-18

γ Range: 0 - 180DEG  
 γ Interval: 5.0DEG  
 Test System:EVERFINE GO-2000B\_V1 SYSTEM V2.00.473  
 Humidity:65.0%  
 Test Distance:9.401m [K=1.0000]  
 Remarks:

**UGR(Unified Glare Rating) Table**

Test:U:220.24V I:0.4967A P:106.73W PF:0.9755 Freq:50.00Hz Lamp Flux:15108.2x1 lm		
NAME: 工矿灯	TYPE: 709	WEIGHT:
SPEC.:	DIM.:	SERIAL No.:
MFR.: EVERFINE	SUR.: 1	Shielding Angle:

ceiling/cavity	0.7	0.7	0.5	0.5	0.3	0.7	0.7	0.5	0.5	0.3
walls	0.5	0.3	0.5	0.3	0.3	0.5	0.3	0.5	0.3	0.3
working plane	0.2	0.2	0.2	0.2	0.2	0.2	0.2	0.2	0.2	0.2

Room dimensions	Viewed crosswise					Viewed endwise				
x = 2H y = 2H	5.7	7.0	6.0	7.2	7.4	5.6	6.8	5.9	7.1	7.3
3H	5.9	7.0	6.2	7.3	7.5	5.8	6.9	6.1	7.2	7.4
4H	6.0	7.0	6.3	7.3	7.6	5.9	7.0	6.2	7.2	7.5
6H	6.0	7.0	6.4	7.3	7.6	5.9	6.9	6.3	7.2	7.5
8H	6.0	7.0	6.4	7.3	7.6	5.9	6.9	6.3	7.2	7.5
12H	6.0	7.0	6.4	7.3	7.6	5.9	6.8	6.2	7.1	7.4
4H 2H	5.7	6.8	6.0	7.0	7.3	5.6	6.7	5.9	6.9	7.2
3H	6.0	6.9	6.4	7.2	7.6	5.9	6.9	6.3	7.2	7.5
4H	6.2	7.0	6.6	7.4	7.7	6.1	7.0	6.5	7.3	7.6
6H	6.3	7.1	6.8	7.4	7.8	6.3	7.0	6.7	7.4	7.7
8H	6.4	7.1	6.8	7.4	7.8	6.3	7.0	6.7	7.3	7.7
12H	6.4	7.0	6.8	7.4	7.8	6.3	6.9	6.7	7.3	7.7
8H 4H	6.2	6.9	6.6	7.3	7.7	6.2	6.8	6.6	7.2	7.6
6H	6.5	7.0	6.9	7.4	7.9	6.4	6.9	6.8	7.3	7.8
8H	6.5	7.0	7.0	7.5	7.9	6.4	6.9	6.9	7.4	7.8
12H	6.6	7.0	7.1	7.5	8.0	6.5	6.9	6.9	7.3	7.8
12H 4H	6.2	6.8	6.6	7.2	7.6	6.1	6.8	6.6	7.1	7.6
6H	6.4	6.9	6.9	7.4	7.8	6.4	6.9	6.8	7.3	7.8
8H	6.5	7.0	7.0	7.4	7.9	6.4	6.9	6.9	7.3	7.8

Variations with the observer position at spacings(CIE Pub.117):		
S = 1.0H	+ 0.9 / - 1.4	+ 1.0 / - 1.5
1.5H	+ 0.7 / - 1.5	+ 1.0 / - 1.6
2.0H	+ 2.5 / - 2.2	+ 2.9 / - 2.1

CIE Pub.117, 15108 lm Total Lamp Luminous Flux Correct (8log(F/F0) = 9.4)  
Area: 1 m2

C Range: 0 - 360DEG	γ Range: 0 - 180DEG
C Interval: 22.5DEG	γ Interval: 5.0DEG
Test Speed: HIGH	Test System:EVERFINE GO-2000B_V1 SYSTEM V2.00.473
Temperature:25.3°C	Humidity:65.0%
Operators:DAMIN	Test Distance:9.401m [K=1.0000]
Test Date:2023-11-18	Remarks:

**UTILIZATION FACTORS TABLE**

Test:U:220.24V I:0.4967A P:106.73W PF:0.9755 Freq:50.00Hz Lamp Flux:15108.2x1 lm		
NAME: 工矿灯	TYPE: 709	WEIGHT:
SPEC.:	DIM.:	SERIAL No.:
MFR.: EVERFINE	SUR.: 1	Shielding Angle:

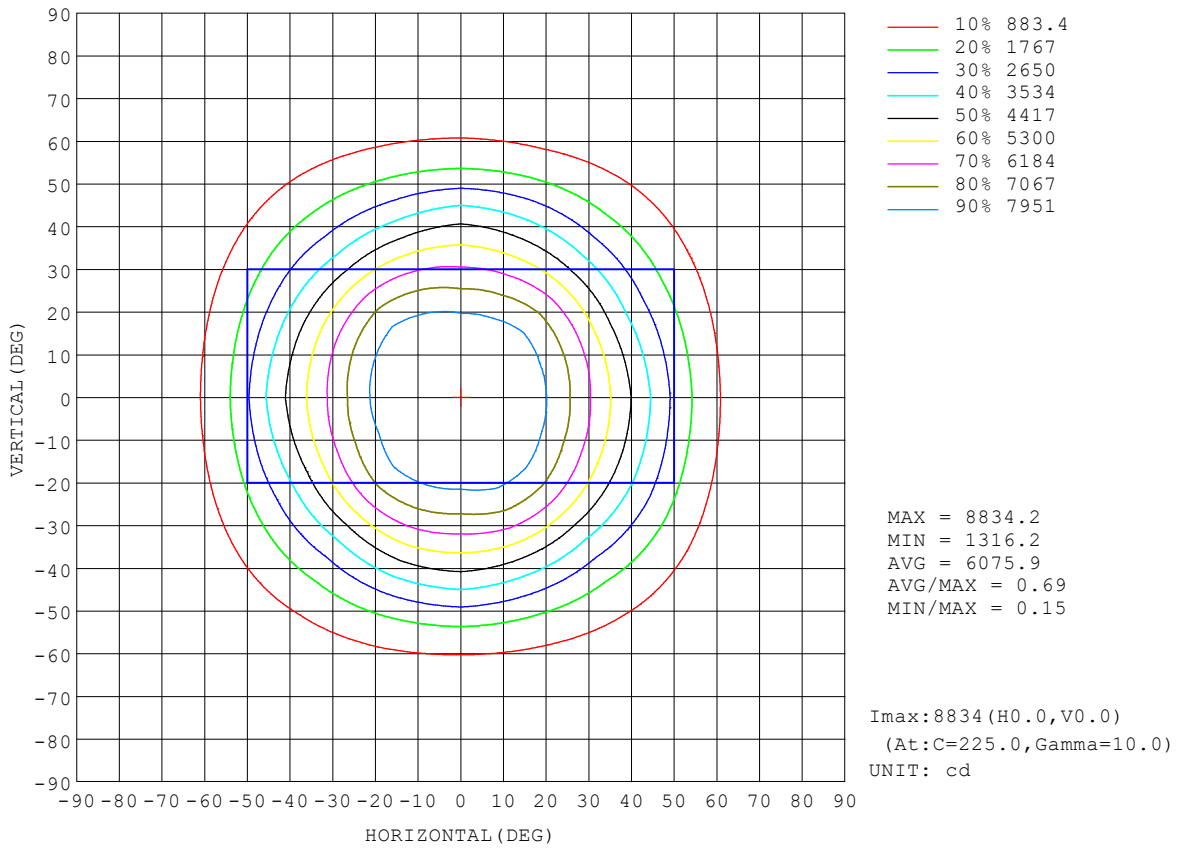
REFLECTANCE										
Ceiling	0.8	0.8	0.8	0.7	0.7	0.7	0.5	0.5	0.5	0
Walls	0.7	0.5	0.3	0.7	0.5	0.3	0.7	0.5	0.3	0
Working plane	0.2	0.2	0.2	0.2	0.2	0.2	0.2	0.2	0.2	0
ROOM INDEX	UTILIZATION FACTORS (PERCENT) $k(RI) \times RCR = 5$									
k = 0.60	70	61	55	69	61	55	68	60	55	50
0.80	80	71	65	79	70	65	77	70	64	59
1.00	87	79	73	86	78	73	84	79	72	67
1.25	93	85	80	92	85	80	89	83	79	73
1.50	97	90	85	96	89	84	93	87	83	77
2.00	102	96	91	100	95	90	97	92	89	82
2.50	105	99	95	103	98	94	99	95	92	84
3.00	107	102	98	105	101	97	101	98	95	87
4.00	110	106	102	108	104	101	104	101	98	90
5.00	112	108	105	109	106	103	105	102	100	92
ROOM INDEX	UF(total)									Direct
According to DIN EN 13032-2 2004			Suspended				SHRNOM = 1.25			

C Range: 0 - 360DEG  
 C Interval: 22.5DEG  
 Test Speed: HIGH  
 Temperature:25.3°C  
 Operators:DAMIN  
 Test Date:2023-11-18

γ Range: 0 - 180DEG  
 γ Interval: 5.0DEG  
 Test System:EVERFINE GO-2000B\_V1 SYSTEM V2.00.473  
 Humidity:65.0%  
 Test Distance:9.401m [K=1.0000]  
 Remarks:

**ISOCANDELA DIAGRAM**

Test:U:220.24V I:0.4967A P:106.73W PF:0.9755 Freq:50.00Hz Lamp Flux:15108.2x1 lm		
NAME: 工矿灯	TYPE: 709	WEIGHT:
SPEC.:	DIM.:	SERIAL No.:
MFR.: EVERFINE	SUR.: 1	Shielding Angle:



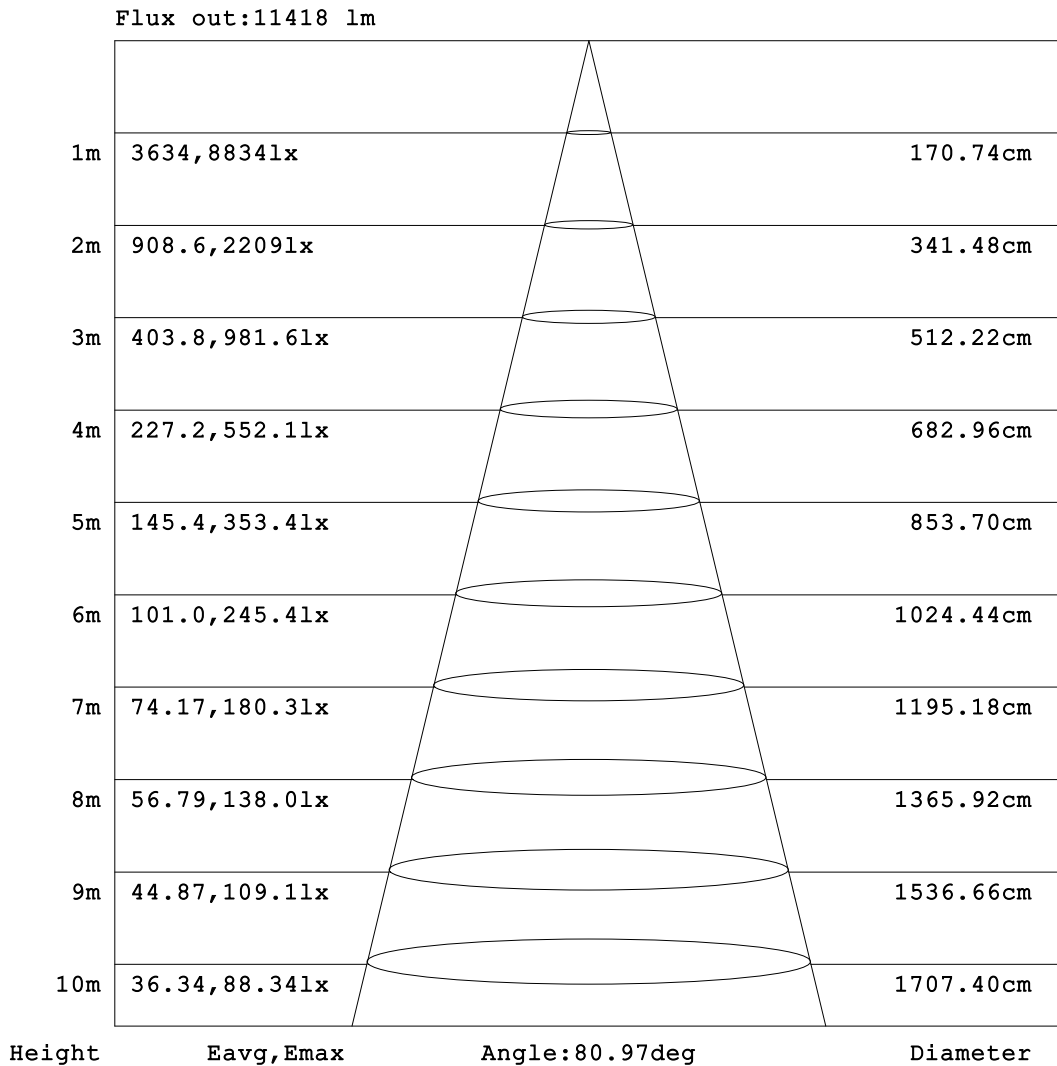
C Range: 0 - 360DEG  
 C Interval: 22.5DEG  
 Test Speed: HIGH  
 Temperature:25.3°C  
 Operators:DAMIN  
 Test Date:2023-11-18

γ Range: 0 - 180DEG  
 γ Interval: 5.0DEG  
 Test System:EVERFINE GO-2000B\_V1 SYSTEM V2.00.473  
 Humidity:65.0%  
 Test Distance:9.401m [K=1.0000]  
 Remarks:



**AAI Figure**

Test:U:220.24V I:0.4967A P:106.73W PF:0.9755 Freq:50.00Hz Lamp Flux:15108.2x1 lm		
NAME: 工矿灯	TYPE: 709	WEIGHT:
SPEC.:	DIM.:	SERIAL No.:
MFR.: EVERFINE	SUR.: 1	Shielding Angle:



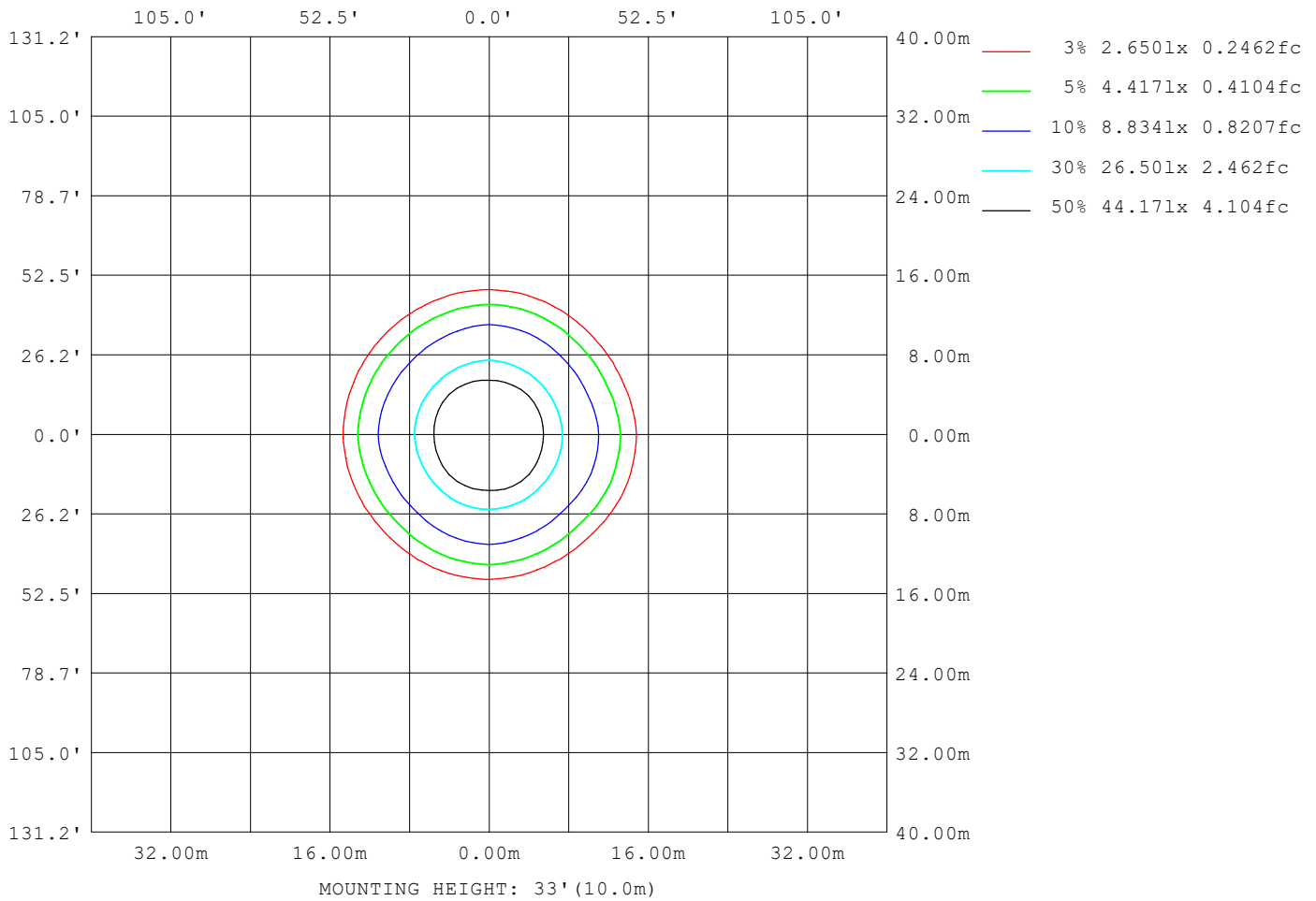
Note:The Curves indicate the illuminated area and the average illumination when the luminaire is at different distance.

C Range: 0 - 360DEG  
C Interval: 22.5DEG  
Test Speed: HIGH  
Temperature:25.3°C  
Operators:DAMIN  
Test Date:2023-11-18

γ Range: 0 - 180DEG  
γ Interval: 5.0DEG  
Test System:EVERFINE GO-2000B\_V1 SYSTEM V2.00.473  
Humidity:65.0%  
Test Distance:9.401m [K=1.0000]  
Remarks:

**ISOLUX DIAGRAM**

Test:U:220.24V I:0.4967A P:106.73W PF:0.9755 Freq:50.00Hz Lamp Flux:15108.2x1 lm		
NAME: 工矿灯	TYPE: 709	WEIGHT:
SPEC.:	DIM.:	SERIAL No.:
MFR.: EVERFINE	SUR.: 1	Shielding Angle:



C Range: 0 - 360DEG  
 C Interval: 22.5DEG  
 Test Speed: HIGH  
 Temperature:25.3°C  
 Operators:DAMIN  
 Test Date:2023-11-18

γ Range: 0 - 180DEG  
 γ Interval: 5.0DEG  
 Test System:EVERFINE GO-2000B\_V1 SYSTEM V2.00.473  
 Humidity:65.0%  
 Test Distance:9.401m [K=1.0000]  
 Remarks:

**LED Avg.L Report**

Test:U:220.24V I:0.4967A P:106.73W PF:0.9755 Freq:50.00Hz Lamp Flux:15108.2x1 lm		
NAME: 工矿灯	TYPE: 709	WEIGHT:
SPEC.:	DIM.:	SERIAL No.:
MFR.: EVERFINE	SUR.: 1	Shielding Angle:

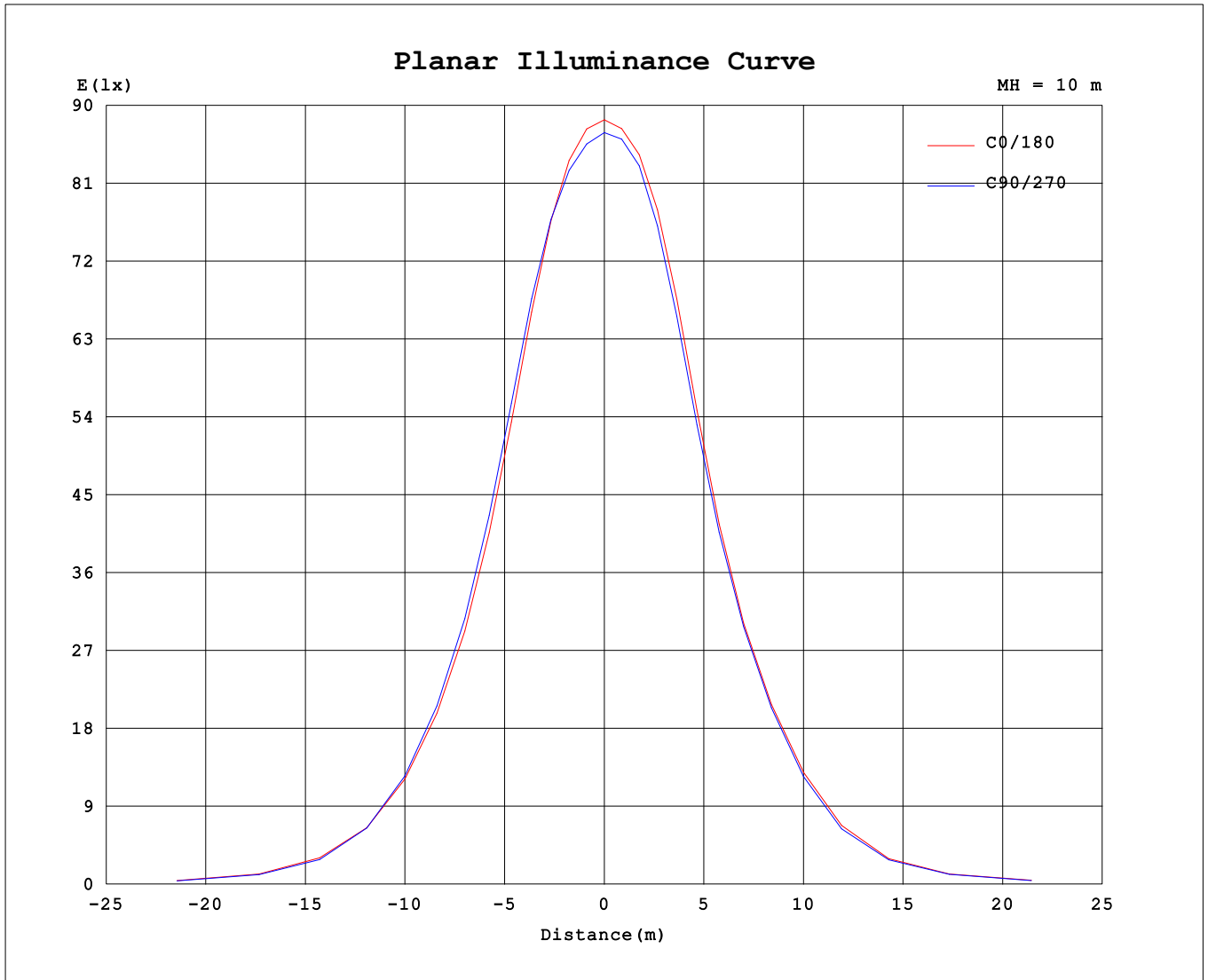
AvgL	cd/m2
L_0~180 (65) av	1377
L_0~180 (75) av	991
L_0~180 (85) av	786
L_90~270 (65) av	1361
L_90~270 (75) av	992
L_90~270 (85) av	714
L_45 (65) av	1421
L_45 (75) av	1144
L_45 (85) av	867

Standard: GB/T 29293-2012

C Range: 0 - 360DEG  
 C Interval: 22.5DEG  
 Test Speed: HIGH  
 Temperature:25.3℃  
 Operators:DAMIN  
 Test Date:2023-11-18

γ Range: 0 - 180DEG  
 γ Interval: 5.0DEG  
 Test System:EVERFINE GO-2000B\_V1 SYSTEM V2.00.473  
 Humidity:65.0%  
 Test Distance:9.401m [K=1.0000]  
 Remarks:

**Planar Illuminance Curve**



C Range: 0 - 360DEG  
 C Interval: 22.5DEG  
 Test Speed: HIGH  
 Temperature: 25.3°C  
 Operators: DAMIN  
 Test Date: 2023-11-18

γ Range: 0 - 180DEG  
 γ Interval: 5.0DEG  
 Test System: EVERFINE GO-2000B\_V1 SYSTEM V2.00.473  
 Humidity: 65.0%  
 Test Distance: 9.401m [K=1.0000]  
 Remarks:

LUMINOUS DISTRIBUTION INTENSITY DATA

Test:U:220.24V I:0.4967A P:106.73W PF:0.9755 Freq:50.00Hz Lamp Flux:15108.2x1 lm		
NAME: 工矿灯	TYPE: 709	WEIGHT:
SPEC.:	DIM.:	SERIAL No.:
MFR.: EVERFINE	SUR.: 1	Shielding Angle:

Table--1

UNIT: cd

C (DEG) \ γ (DEG)	0	22.5	45	67.5	90	112.5	135	157.5	180	202.5	225	247.5	270	292.5	315	337.5			
0	8711	8711	8711	8711	8711	8711	8711	8711	8711	8711	8711	8711	8711	8711	8711	8711			
5	8706	8708	8696	8687	8677	8676	8683	8698	8710	8723	8731	8737	8736	8731	8724	8715			
10	8635	8648	8662	8669	8661	8668	8677	8688	8705	8716	8739	8736	8717	8707	8703	8672			
15	8388	8435	8534	8584	8548	8578	8595	8554	8526	8565	8631	8557	8469	8483	8552	8485			
20	7857	7963	8202	8293	8178	8250	8313	8158	8038	8155	8289	8113	7935	7990	8157	8054			
25	7077	7216	7577	7679	7492	7611	7724	7464	7256	7439	7640	7404	7155	7240	7465	7343			
30	6175	6298	6623	6750	6588	6725	6784	6541	6324	6496	6652	6464	6286	6314	6465	6383			
35	5250	5293	5423	5594	5604	5666	5558	5472	5419	5456	5426	5396	5436	5325	5286	5269			
40	4339	4292	4212	4396	4606	4529	4258	4350	4559	4399	4180	4285	4554	4326	4122	4138			
45	3389	3338	3107	3297	3551	3392	3099	3279	3617	3344	3114	3230	3534	3328	3086	3110			
50	2434	2422	2169	2298	2463	2355	2189	2319	2528	2352	2243	2293	2426	2342	2171	2222			
55	1612	1572	1426	1462	1532	1508	1448	1510	1549	1516	1489	1495	1516	1475	1415	1461			
60	935	939	903	895	906	919	898	930	938	928	932	924	938	898	904	909			
65	562	578	588	578	562	581	589	599	601	598	616	603	589	585	608	590			
70	374	389	410	397	370	389	413	412	398	409	436	418	394	404	434	414			
75	251	266	285	272	244	259	285	281	262	277	307	289	269	276	308	290			
80	159	168	178	170	148	157	176	173	161	174	191	181	170	175	198	185			
85	71.5	72.3	70.3	68.4	55.3	58.3	64.8	67.5	65.5	73.9	81.1	73.9	69.2	73.9	86.1	83.3			
90	3.46	3.35	3.42	3.31	3.31	3.29	3.30	3.30	4.01	4.04	3.91	3.93	3.90	3.93	3.88	4.19			
95	4.63	4.60	4.55	4.59	4.60	4.55	4.48	4.54	5.63	5.60	5.45	5.45	5.54	5.50	5.42	5.49			
100	6.60	6.48	6.42	6.46	6.55	6.40	6.30	6.35	7.87	7.84	7.68	7.73	7.85	7.83	7.66	7.75			
105	9.17	9.04	8.96	9.01	9.12	8.91	8.79	8.83	10.7	10.7	10.6	10.7	10.8	10.8	10.6	10.7			
110	12.4	12.3	12.2	12.2	12.3	12.1	12.0	11.9	14.2	14.3	14.3	14.5	14.5	14.5	14.4	14.4			
115	16.2	16.1	16.1	16.0	16.0	15.8	15.8	15.7	18.3	18.4	18.5	18.8	18.8	18.9	18.7	18.7			
120	20.5	20.4	20.4	20.3	20.3	20.0	20.0	19.8	22.8	23.0	23.1	23.4	23.5	23.6	23.4	23.4			
125	25.1	24.9	25.0	24.8	24.8	24.5	24.5	24.3	27.6	27.7	27.9	28.2	28.3	28.4	28.3	28.3			
130	29.7	29.6	29.7	29.5	29.4	29.1	29.1	28.9	32.3	32.5	32.7	33.0	33.2	33.3	33.2	33.1			
135	34.3	34.2	34.3	34.2	34.1	33.6	33.6	33.5	37.0	37.2	37.5	37.6	37.8	38.0	38.0	37.9			
140	38.8	38.6	38.8	38.6	38.5	38.0	38.1	37.9	41.5	41.5	41.9	41.9	42.2	42.3	42.5	42.3			
145	42.9	42.8	43.0	42.8	42.7	42.2	42.2	42.0	45.6	45.4	45.9	45.9	46.3	46.2	46.5	46.3			
150	46.9	46.9	46.8	46.6	46.6	46.1	46.1	46.0	49.5	49.2	49.6	49.6	50.0	49.7	50.1	50.1			
155	50.9	50.9	50.6	50.4	50.4	49.9	49.9	50.0	53.4	53.0	53.0	53.1	53.5	53.1	53.3	53.6			
160	55.0	54.8	54.6	54.6	54.5	53.9	54.0	54.1	57.1	56.7	56.7	56.5	57.0	56.8	56.8	56.9			
165	59.0	58.9	58.9	59.3	58.8	58.3	58.2	58.4	60.8	60.4	60.3	60.2	60.7	60.8	60.5	60.3			
170	62.7	63.0	63.2	63.5	62.8	62.4	62.4	62.5	64.0	63.9	63.9	63.6	64.1	64.3	64.0	63.7			
175	66.1	66.6	66.9	66.9	66.1	66.0	66.1	65.8	66.9	66.8	66.9	66.4	66.8	67.1	67.2	66.6			
180	68.2	68.6	68.5	68.3	67.9	68.2	68.3	68.0	68.5	68.3	68.8	68.0	68.2	68.1	68.5	67.9			

C Range: 0 - 360DEG  
 C Interval: 22.5DEG  
 Test Speed: HIGH  
 Temperature:25.3℃  
 Operators:DAMIN  
 Test Date:2023-11-18

γ Range: 0 - 180DEG  
 γ Interval: 5.0DEG  
 Test System:EVERFINE GO-2000B\_V1 SYSTEM V2.00.473  
 Humidity:65.0%  
 Test Distance:9.401m [K=1.0000]  
 Remarks: